

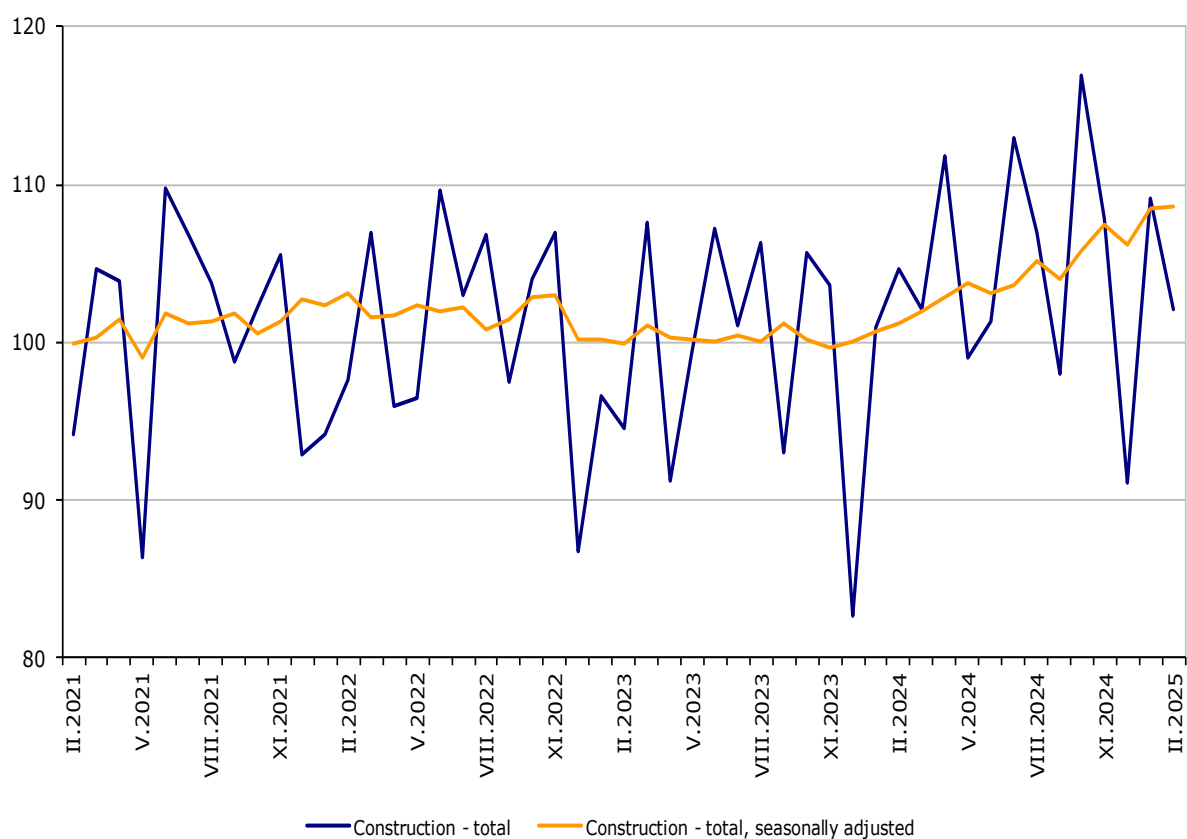


## CONSTRUCTION PRODUCTION INDICES IN FEBRUARY 2025

In February 2025, the production index in the 'Construction' section increased by 0.2% compared to the previous month (Table 1). The data are preliminary and seasonally adjusted.

The calendar-adjusted data showed a rise of 7.4% in the construction production compared to the same month of 2024 (Table 2).

**Figure 1. Construction Production Indices (2021 = 100)**

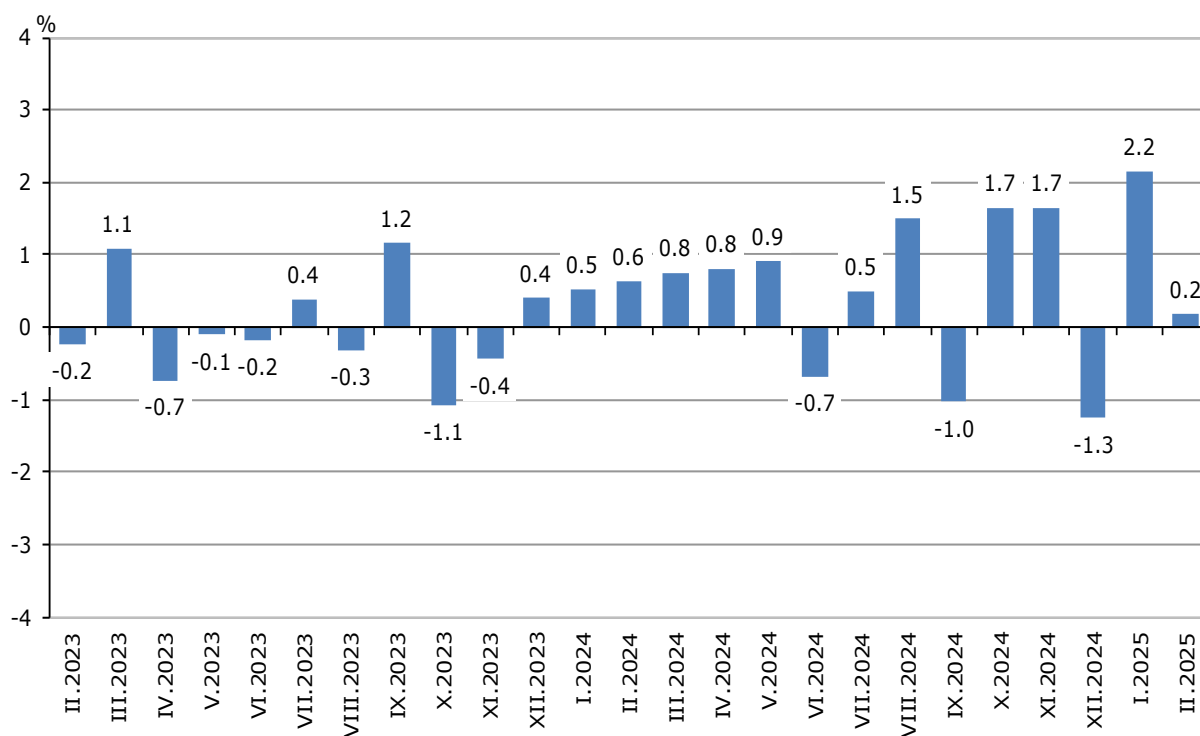


## CONSTRUCTION PRODUCTION INDICES IN FEBRUARY 2025

### Monthly changes

In February 2025, compared to the previous month, an increase was observed in the specialized construction activities - by 1.1%. A decrease was seen in the production of civil engineering - by 0.5%, and in the building construction - by 0.2% (Table 1).

**Figure 2. Changes of the Construction Production Indices compared to the previous month**  
(Seasonally adjusted, 2021 = 100)

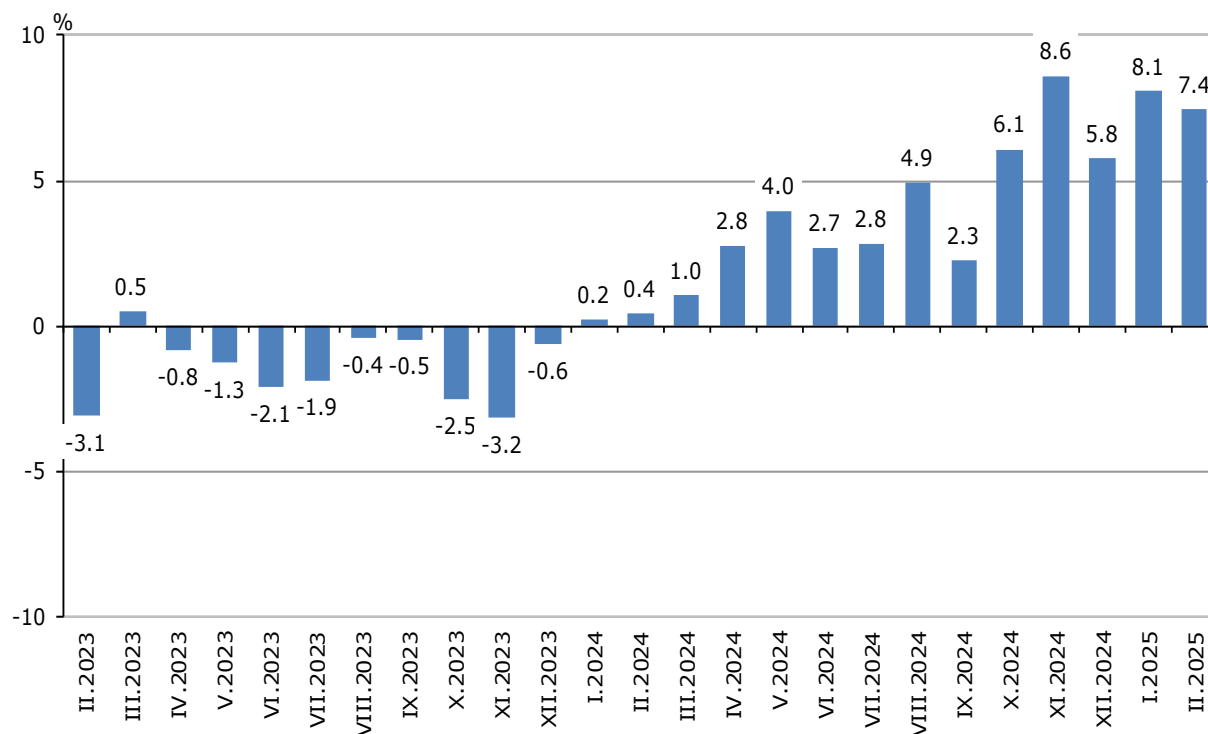


## CONSTRUCTION PRODUCTION INDICES IN FEBRUARY 2025

### Annual changes

In February 2025, compared to the same month of 2024, a rise of production was registered in the civil engineering - by 9.7%, in the specialized construction activities - by 7.6%, and in the construction of buildings - by 5.8% (Table 2).

**Figure 3. Changes of the Construction Production Indices compared to the same month of the previous year (Calendar-adjusted, 2021 = 100)**



### Methodological notes

The monthly indices show the short-term changes in the construction production between two comparable periods. This information can be used to analyse the current state of construction activity in the country, as well as a short-term forecast for its future development.

The indices are calculated on the basis of information on hours worked in construction. The data are collected with a monthly sample survey that includes construction enterprises, whose production exceeds 75% of the total production in construction. Construction Production Indices are calculated on the base 2021 = 100. Since 2024, the data has been provided according to the requirements of Regulation (EU) 2019/2152 and Regulation (EU) 2020/1197.

Seasonal adjustment is a statistical method that eliminates the seasonal component of time series.

Calendar adjustment is an adjustment for variations in the monthly data, caused by calendar effects, the different number of calendar and working days in the months, national holidays and outliers (for example, the presence of more non-working days in May could contribute to the decline in the production in some activities).

Since July 2024, all dynamic rows have been recalculated based on 2021 as base year and are published in IS Infostat. Data for 2024 are reconciled.

## CONSTRUCTION PRODUCTION INDICES IN FEBRUARY 2025

### Annex

**Table 1**

#### Changes of the Construction Production Indices compared to the previous month<sup>1</sup>

(Per cent)

Indicators	2024				2025	
	IX	X	XI	XII	I	II
<b>Construction - total</b>	<b>-1.0</b>	<b>1.7</b>	<b>1.7</b>	<b>-1.3</b>	<b>2.2</b>	<b>0.2</b>
Construction of buildings	-0.5	2.4	0.4	-1.7	2.0	-0.2
Civil engineering	-1.5	2.4	2.0	-0.9	3.6	-0.5
Specialized construction activities	-1.3	0.3	2.8	-1.0	1.3	1.1

<sup>1</sup> Seasonally adjusted.

**Table 2**

#### Changes of the Construction Production Indices compared to the same month of the previous year<sup>1</sup>

(Per cent)

Indicators	2024				2025	
	IX	X	XI	XII	I	II
<b>Construction - total</b>	<b>2.3</b>	<b>6.1</b>	<b>8.6</b>	<b>5.8</b>	<b>8.1</b>	<b>7.4</b>
Construction of buildings	-2.3	4.6	5.5	0.5	5.6	5.8
Civil engineering	3.2	6.1	9.2	8.3	11.0	9.7
Specialized construction activities	7.1	7.9	11.8	10.2	8.8	7.6

<sup>1</sup> Calendar-adjusted.

## CONSTRUCTION PRODUCTION INDICES IN FEBRUARY 2025

**Table 3**

### Construction Production Indices (Seasonally adjusted, 2021 = 100)

Indicators	2024											2025	
	II	III	IV	V	VI	VII	VIII	IX	X	XI	XII	I	II
Construction - total	101.3	102.0	102.9	103.8	103.1	103.6	105.1	104.1	105.8	107.5	106.2	108.5	108.7
Construction of buildings	100.3	102.2	102.9	103.0	102.6	102.9	103.4	102.9	105.4	105.8	104.0	106.0	105.8
Civil engineering	92.0	92.5	93.6	93.0	94.5	94.4	96.1	94.6	96.9	98.9	98.0	101.5	101.0
Specialized construction activities	110.7	110.3	111.0	114.3	111.3	112.6	115.5	113.9	114.2	117.4	116.2	117.7	118.9

**Table 4**

### Construction Production Indices (Calendar-adjusted, 2021=100)

Indicators	2024											2025	
	II	III	IV	V	VI	VII	VIII	IX	X	XI	XII	I	II
Construction - total	97.1	105.7	101.6	101.6	107.6	109.0	107.6	99.2	112.8	109.8	95.1	106.6	104.3
Construction of buildings	95.7	107.0	102.9	101.4	106.6	107.0	105.2	96.7	112.9	107.5	92.3	106.0	101.3
Civil engineering	87.5	94.9	91.3	89.8	99.4	100.6	100.1	91.1	104.0	102.1	88.3	96.9	96.0
Specialized construction activities	107.3	113.6	109.1	112.3	116.0	118.9	117.2	109.4	120.7	119.5	104.6	115.9	115.4