

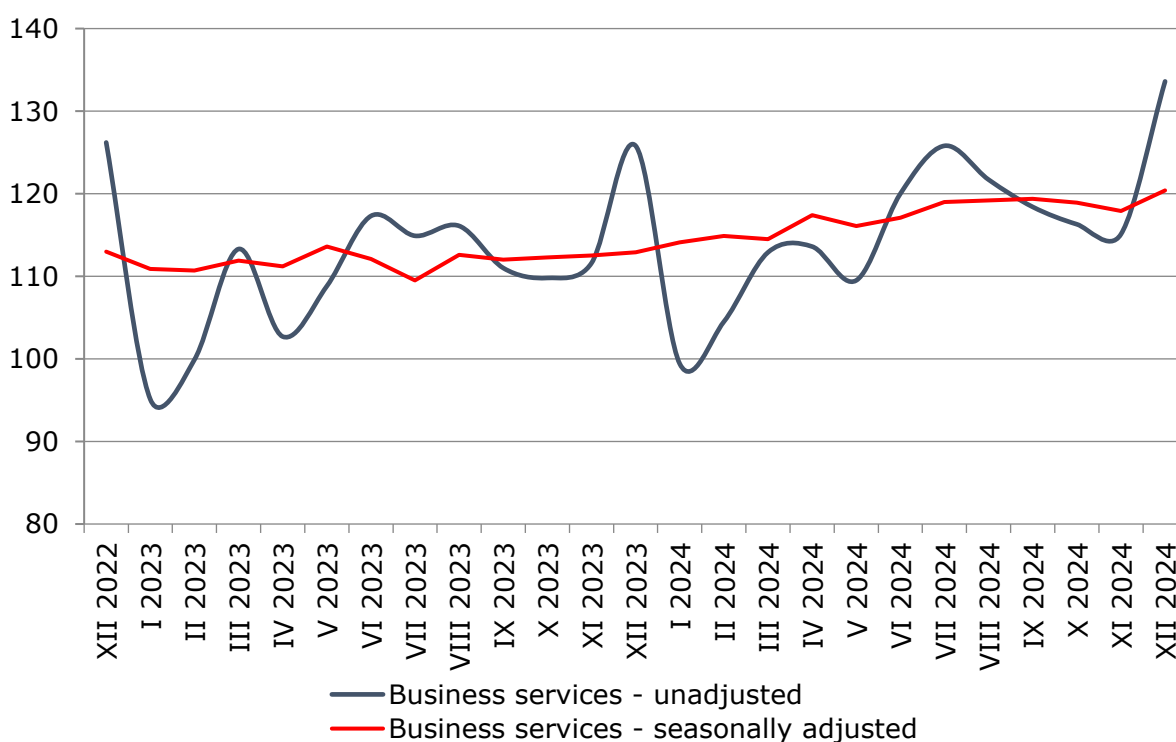


SERVICES PRODUCTION INDICES IN DECEMBER 2024

In December 2024, the total production index in **Services of the business economy**¹ increased by 2.1% compared to the previous month. The data are preliminary and seasonally adjusted.

Compared to December 2023, an increase of 6.0% was registered in the calendar-adjusted index according to preliminary data.

Figure 1. Production indices for Business services (2021 = 100)

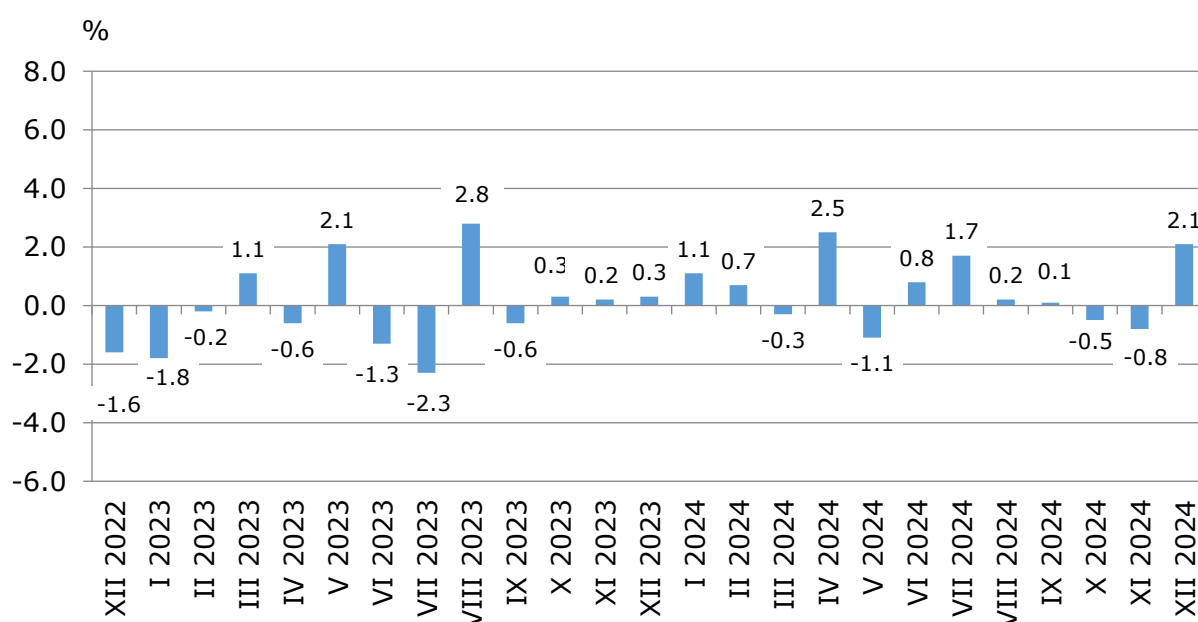


¹ Business services include the following sectors from NACE.BG - 2008: H - Transportation and storage, I - Accommodation and food service activities, J - Information and communication, L - Real estate activities, M_STG - Professional, scientific and technical activities (specific grouping under Regulation (EU) 2019/2152), and N - Administrative and support service activities.

Monthly changes

An increase, compared to the previous month, was reported in the following sectors: 'Real estate activities' - by 16.8%, 'Transportation and storage' - by 3.8%, and 'Information and communication' - by 3.2%. A decline was seen in three sectors: 'Administrative and support service activities' - by 6.2%, 'Accommodation and food service activities' - by 0.4% and 'Professional, scientific and technical activities' - by 0.2%.

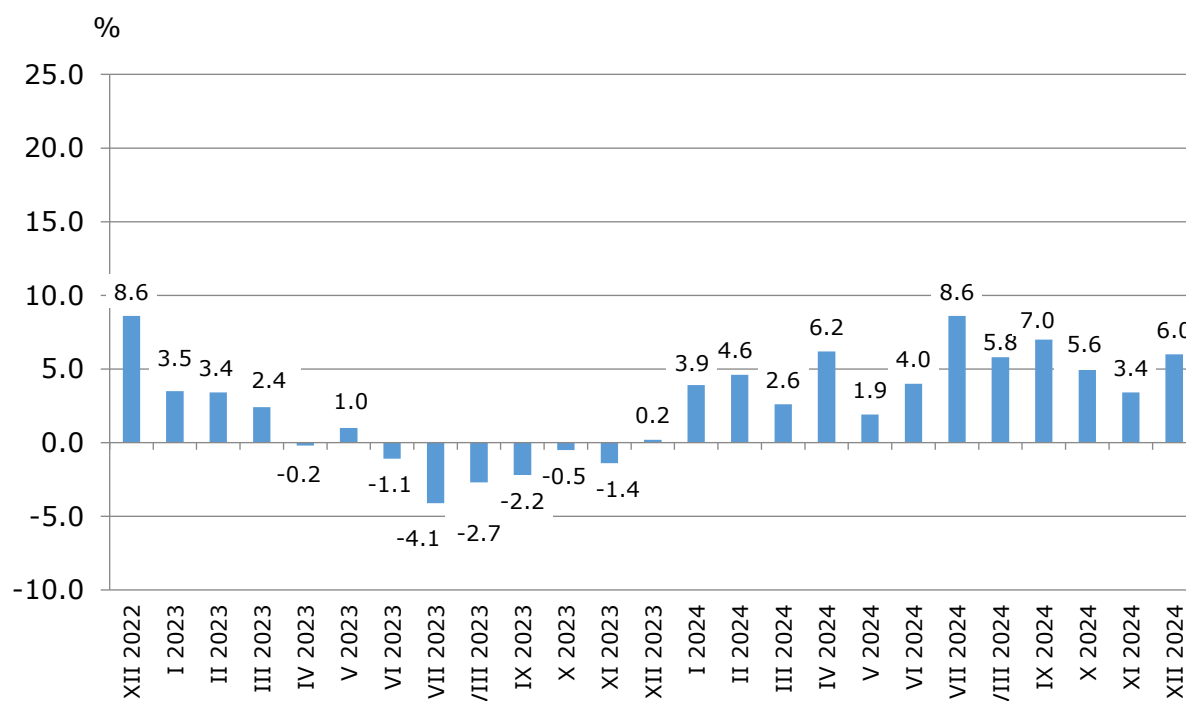
Figure 2. Changes of production indices for Business services compared to the previous month (Seasonally adjusted data)



Annual changes

On an annual basis, a rise was observed in the following sectors: 'Transportation and storage' - by 10.1%, 'Information and communication' - by 9.3%, 'Real estate activities' - by 6.0%, 'Professional, scientific and technical activities' - by 3.9%, and 'Accommodation and food service activities' - by 0.1%. A decrease was reported in the sector 'Administrative and support service activities' - by 2.3%.

**Figure 3. Changes of production indices for Business services
compared to the same month of the previous year
(Calendar-adjusted data)**



Methodological notes

Monthly indices of production in services are calculated and published two months after the reference period (M+2) in accordance with the requirements of Regulation (EU) 2019/2152 of the European Parliament and of the Council for European Business Statistics.

Production indices in services are calculated by deflating the turnover indices for each activity with the corresponding producer price indices. The purpose of the production index is to measure changes in the output volume at monthly intervals. The indices are calculated with 2021 as a base year.

Seasonal adjustment is a statistical method which eliminates the seasonal component of time series.

Calendar adjustment is an adjustment for variations caused by calendar effects, a different number of calendar and working days in the months, national holidays and outliers (for example, the presence of more non-working days in May could contribute to the decline in some activities). Since July 2024, all dynamic rows have been recalculated based on 2021 as base year and have been published in IS Infostat.

SERVICES PRODUCTION INDICES IN DECEMBER 2024

Annex

Table 1

Changes of production indices in services¹ (Compared to the previous month)

(Per cent)

Economic activities	NACE.BG - 2008	2024					
		VII	VIII	IX	X	XI	XII*
Services of the business economy (except trade and financial and insurance activities)	HTNXK	1.7	0.2	0.1	-0.5	-0.8	2.1
Transportation and storage	H	1.4	-3.1	0.9	2.8	-1.8	3.8
Land transport and transport via pipelines	H49	1.1	-2.8	-0.2	2.9	-0.7	2.6
Water transport	H50	-2.5	6.1	-8.2	0.0	2.3	7.2
Air transport	H51	-3.2	-10.0	19.6	15.5	-18.7	30.9
Warehousing and support activities for transportation	H52	1.6	-3.0	0.2	-1.4	0.6	2.2
Postal and courier activities	H53	8.7	-2.1	-0.9	6.4	-1.4	-5.3
Accommodation and food service activities	I	0.7	-1.2	-1.1	0.4	-0.2	-0.4
Accommodation	I55	0.0	-1.2	-1.9	-4.4	-0.6	0.6
Food and beverage service activities	I56	-1.4	4.1	-3.1	2.7	-0.5	-1.0
Information and communication	J	3.3	0.4	1.9	-2.0	-2.6	3.2
Publishing activities	J58	36.0	28.9	-44.6	0.4	1.3	-3.2
Motion picture, video, television programme production; programming and broadcasting activities	J59	-10.8	-20.5	29.4	-4.9	-1.0	-23.1
Programming and broadcasting activities	J60	2.3	7.3	-3.2	-3.1	-5.2	7.4
Telecommunications	J61	0.0	-0.8	4.5	0.3	-1.7	-0.7
Computer programming, consultancy and related activities	J62	3.8	1.2	2.6	-3.4	-1.6	4.7
Information service activities	J63	11.5	-6.3	6.5	-3.3	-14.5	27.2
Real estate activities	L	-9.0	1.5	5.1	-5.4	-8.8	16.8
Professional, scientific and technical activities (specific grouping under Regulation (EU) 2019/2152)	M_STS	7.5	5.4	-4.2	0.3	0.5	-0.2
Legal and accounting activities	M69	6.6	8.5	-3.1	-1.2	-8.9	-3.9
Management consultancy activities	M702	17.9	14.8	-2.9	-10.8	7.8	1.6
Architectural and engineering activities; technical testing and analysis	M71	14.9	-2.7	-0.7	7.5	3.5	-4.4
Advertising and market research	M73	-7.1	0.3	-3.7	8.2	-5.3	10.5
Other professional, scientific and technical activities	M74	2.3	4.5	-11.5	2.6	4.7	-0.6
Administrative and support service activities	N	-2.2	0.1	-0.8	-3.2	9.5	-6.2
Rental and leasing activities	N77	2.3	-9.9	1.9	-4.8	-6.5	-0.4
Employment activities	N78	-8.5	1.6	2.9	-0.4	2.6	12.6
Travel agency, tour operator reservation service and related activities	N79	0.4	4.7	-13.1	-9.5	1.0	1.9
Security and investigation activities	N80	-1.0	5.1	-1.8	-4.4	3.7	0.0
Services to buildings and landscape activities	N81	-7.0	-1.3	3.6	2.2	6.8	-1.9
Office administrative, office support and other business support activities	N82	-3.0	-0.7	3.2	-0.4	39.1	-28.8

¹ Seasonally adjusted data.

* Preliminary data.

SERVICES PRODUCTION INDICES IN DECEMBER 2024

Table 2

Changes of production indices in services¹ (Compared to the same month of the previous year)

(Per cent)

Economic activities	NACE.BG - 2008	2024					
		VII	VIII	IX	X	XI	XII*
Services of the business economy (except trade and financial and insurance activities)	HTNXK	8.6	5.8	7.0	5.6	3.4	6.0
Transportation and storage	H	10.3	1.3	3.5	4.2	2.8	10.1
Land transport and transport via pipelines	H49	6.7	-1.3	1.1	2.3	3.1	9.4
Water transport	H50	8.6	7.4	4.0	-7.5	-6.0	-6.1
Air transport	H51	18.2	-0.7	12.9	30.4	13.8	66.5
Warehousing and support activities for transportation	H52	12.6	4.2	3.3	0.1	-2.6	5.2
Postal and courier activities	H53	23.4	13.3	11.9	16.8	17.3	9.8
Accommodation and food service activities	I	6.5	4.9	3.5	2.4	3.6	0.1
Accommodation	I55	20.6	15.8	16.3	9.6	5.6	0.9
Food and beverage service activities	I56	-6.1	-5.5	-6.8	-1.2	1.8	-0.4
Information and communication	J	15.3	11.7	13.8	12.2	8.2	9.3
Publishing activities	J58	22.0	76.8	-7.3	5.0	-6.0	-13.7
Motion picture, video, television programme production; programming and broadcasting activities	J59	17.5	-23.5	39.6	-11.3	35.9	-26.6
Programming and broadcasting activities	J60	-9.5	-13.5	-16.6	-11.3	-19.9	-6.4
Telecommunications	J61	16.7	9.4	17.5	18.5	12.8	12.0
Computer programming, consultancy and related activities	J62	15.9	14.2	12.5	12.6	12.3	11.4
Information service activities	J63	7.0	1.8	16.7	5.1	-21.9	18.2
Real estate activities	L	-0.2	-0.6	7.3	2.6	-20.3	6.0
Professional, scientific and technical activities (specific grouping under Regulation (EU) 2019/2152)	M_STS	8.2	12.2	10.1	9.1	11.3	3.9
Legal and accounting activities	M69	12.5	28.6	18.6	20.1	2.8	-1.8
Management consultancy activities	M702	56.9	129.2	72.6	41.4	54.2	27.4
Architectural and engineering activities; technical testing and analysis	M71	-17.1	-14.0	-16.3	-2.1	9.1	-3.5
Advertising and market research	M73	-8.1	-8.3	-17.8	-9.6	-11.4	-3.4
Other professional, scientific and technical activities	M74	11.4	-21.5	3.6	5.1	10.9	9.2
Administrative and support service activities	N	-0.4	-0.6	-0.4	-7.0	-2.5	-2.3
Rental and leasing activities	N77	-13.7	-24.1	-22.6	-33.5	-39.8	-33.9
Employment activities	N78	0.7	4.3	1.7	1.4	2.8	26.8
Travel agency, tour operator reservation service and related activities	N79	18.3	24.2	12.9	-0.5	-2.6	8.7
Security and investigation activities	N80	-0.7	1.5	5.8	-0.9	-1.3	2.2
Services to buildings and landscape activities	N81	-7.9	-7.9	-2.2	1.3	11.5	11.7
Office administrative, office support and other business support activities	N82	1.3	-0.1	4.3	4.3	29.9	2.8

¹ Calendar-adjusted data.

* Preliminary data.

SERVICES PRODUCTION INDICES IN DECEMBER 2024

Table 3

Production indices in services - seasonally adjusted (2021 = 100)

NACE.BG - 2008	2023	2024*											
	XII	I	II	III	IV	V	VI	VII	VIII	IX	X	XI	XII
HTNXK	112.9	114.1	114.9	114.5	117.4	116.1	117.1	119.0	119.2	119.4	118.9	117.9	120.4
H	105.6	108.5	110.9	110.9	116.7	111.6	111.6	113.2	109.6	110.6	113.8	111.7	115.9
H49	101.4	104.0	107.9	106.0	111.2	104.8	105.5	106.6	103.6	103.4	106.5	105.7	108.4
H50	146.5	119.9	128.6	119.6	132.6	121.0	131.3	128.0	135.8	124.6	124.7	127.6	136.7
H51	201.4	212.2	221.8	228.8	271.4	284.6	252.3	244.1	219.8	263.0	303.6	247.0	323.4
H52	101.9	103.5	102.9	107.4	109.0	106.3	107.3	109.0	105.7	105.9	104.4	105.0	107.3
H53	110.2	123.2	120.5	116.3	129.1	117.5	119.9	130.3	127.5	126.3	134.5	132.6	125.6
I	138.0	137.0	139.5	139.6	140.3	138.4	140.6	141.5	139.8	138.3	138.8	138.6	138.0
I55	160.0	163.2	164.5	167.3	170.9	171.4	179.4	179.4	177.2	173.8	166.2	165.2	166.2
I56	123.3	121.2	122.7	122.8	122.2	122.3	121.2	119.5	124.4	120.6	123.8	123.2	121.9
J	110.0	113.5	114.8	114.1	115.4	117.4	116.4	120.3	120.7	123.1	120.6	117.5	121.2
J58	96.7	85.4	92.2	88.7	86.9	91.5	88.6	120.5	155.4	86.1	86.4	87.6	84.7
J59	109.2	94.8	105.4	104.9	93.5	83.3	123.2	109.9	87.4	113.1	107.5	106.5	81.9
J60	84.0	82.1	96.8	71.7	96.5	82.7	75.5	77.2	82.9	80.2	77.7	73.7	79.1
J61	109.3	113.2	119.3	117.5	117.2	121.6	122.3	122.4	121.3	126.8	127.1	124.9	124.1
J62	112.9	118.2	114.1	117.6	117.7	119.7	117.1	121.5	123.0	126.2	121.9	120.0	125.6
J63	109.9	116.4	119.3	106.3	120.4	120.7	109.2	121.8	114.1	121.6	117.6	100.6	127.9
L	98.0	94.5	96.4	93.3	100.7	96.4	105.1	95.6	97.1	102.0	96.4	87.9	102.7
M_STS	118.2	115.5	115.0	113.8	115.7	115.4	115.8	124.5	131.2	125.7	126.1	126.7	126.5
M69	115.0	116.5	118.8	111.8	111.7	128.5	117.2	124.9	135.5	131.3	129.7	118.1	113.5
M702	122.1	124.3	124.7	115.3	118.8	117.5	134.1	158.1	181.5	176.1	157.2	169.5	172.2
M71	121.7	109.0	108.6	115.8	118.0	112.5	98.8	113.5	110.4	109.6	117.8	121.9	116.6
M73	131.3	134.5	125.4	118.3	128.7	115.1	124.2	115.3	115.7	111.5	120.6	114.2	126.1
M74	104.4	100.4	102.5	108.7	104.5	103.0	112.9	115.4	120.6	106.8	109.5	114.7	114.0
N	116.4	118.9	114.0	116.6	116.2	117.8	119.9	117.3	117.3	116.4	112.7	123.4	115.7
N77	161.9	154.6	118.9	131.8	142.1	125.6	130.6	133.6	120.4	122.7	116.8	109.3	108.9
N78	107.5	113.0	112.3	116.6	97.8	124.6	120.9	110.7	112.5	115.8	115.3	118.4	133.2
N79	161.7	183.6	186.1	186.7	193.2	196.2	222.1	222.9	233.4	202.8	183.5	185.3	188.9
N80	97.9	97.6	101.9	100.2	100.5	102.9	98.7	97.8	102.8	100.9	96.4	100.0	100.1
N81	98.7	111.3	108.7	112.8	113.8	103.2	108.6	101.0	99.7	103.3	105.5	112.7	110.5
N82	105.4	107.2	106.4	106.5	106.2	107.8	110.9	107.6	106.8	110.3	109.9	152.9	108.9

* Preliminary data.

SERVICES PRODUCTION INDICES IN DECEMBER 2024

Table 4

Production indices in services - calendar-adjusted (2021 = 100)

NACE.BG - 2008	2023	2024*											
	XII	I	II	III	IV	V	VI	VII	VIII	IX	X	XI	XII
HTNXK	126.7	98.9	104.4	114.2	112.0	111.6	123.4	129.0	125.7	122.1	117.3	114.6	134.3
H	102.0	93.2	101.9	114.1	115.8	110.2	115.6	126.2	111.1	111.4	118.7	110.4	112.3
H49	98.7	88.5	102.8	112.9	112.0	104.2	109.4	115.4	98.5	101.8	112.9	109.9	107.9
H50	141.9	90.7	104.8	117.5	135.3	130.2	135.8	153.3	151.0	129.5	134.9	116.6	133.2
H51	127.9	118.7	124.2	149.7	209.2	281.8	326.8	424.3	373.6	350.6	301.8	131.9	212.9
H52	99.6	94.5	94.5	111.3	110.3	103.4	105.1	116.6	106.8	104.3	108.0	100.9	104.9
H53	124.1	119.4	116.5	121.3	129.2	113.6	120.8	127.4	119.1	118.7	134.4	146.7	136.3
I	121.0	110.2	116.1	123.2	122.5	131.8	155.2	193.9	212.6	152.0	117.7	106.3	121.1
I55	124.7	123.0	133.2	135.4	136.8	147.3	203.6	279.1	315.3	202.7	121.9	105.5	125.9
I56	118.7	102.9	104.6	116.2	112.6	125.2	127.9	144.3	154.0	123.1	115.2	106.8	118.3
J	138.1	102.5	104.7	118.1	109.8	112.9	120.1	117.4	113.4	122.0	122.0	119.7	150.8
J58	111.6	71.5	72.9	73.3	77.2	82.4	93.7	135.1	149.8	105.7	89.0	91.0	96.4
J59	208.6	69.4	84.9	103.5	81.4	71.5	122.2	99.1	70.1	96.0	123.8	122.6	153.2
J60	88.1	56.1	89.6	74.7	99.6	87.4	79.0	64.5	60.1	75.0	95.8	100.5	82.5
J61	120.0	109.7	110.7	116.0	112.4	120.8	124.8	124.2	123.5	130.2	126.3	123.8	134.4
J62	151.6	104.0	103.4	127.4	111.3	113.2	122.6	115.6	111.1	122.4	123.5	120.2	168.8
J63	134.3	104.0	113.8	110.3	119.1	114.5	107.3	116.4	102.0	116.4	115.1	115.6	158.7
L	116.4	87.1	91.7	91.3	94.8	87.7	109.3	96.8	97.7	111.2	91.4	85.5	123.4
M_STS	161.0	97.3	106.4	115.2	112.3	108.2	124.3	127.1	125.9	123.2	123.4	128.9	167.2
M69	144.7	101.2	108.7	117.2	118.4	129.0	125.8	127.7	122.7	125.3	123.9	114.1	142.2
M702	146.9	120.1	125.9	105.5	108.6	101.7	155.1	179.0	197.9	195.9	145.4	167.4	187.1
M71	200.0	80.8	96.7	118.9	110.3	98.4	102.9	111.7	109.3	96.6	112.6	125.8	192.9
M73	174.3	96.8	106.7	116.9	129.3	115.2	128.9	111.3	98.8	105.0	134.8	134.7	168.4
M74	133.2	93.7	98.8	115.5	98.1	97.6	119.1	112.8	108.3	104.7	108.7	112.0	145.5
N	121.3	104.5	104.8	110.9	109.2	114.4	128.2	126.5	127.0	126.3	111.5	121.1	118.6
N77	187.8	139.9	109.7	126.6	129.1	124.7	131.2	140.3	121.7	124.9	112.4	115.6	124.1
N78	122.6	99.2	108.1	116.0	101.7	123.1	120.5	110.4	111.2	114.4	117.6	119.1	155.4
N79	113.2	105.0	115.4	126.4	139.4	162.0	301.7	326.0	370.5	323.1	167.3	95.8	123.0
N80	105.5	89.4	100.2	97.8	99.3	101.2	98.8	98.9	105.2	102.8	98.7	99.5	107.8
N81	104.2	94.8	98.6	110.2	112.7	106.6	116.5	109.9	103.4	102.9	106.0	112.7	116.3
N82	101.9	105.8	104.0	109.0	101.7	106.5	119.1	105.8	100.2	111.7	108.3	167.5	104.8

* Preliminary data.