

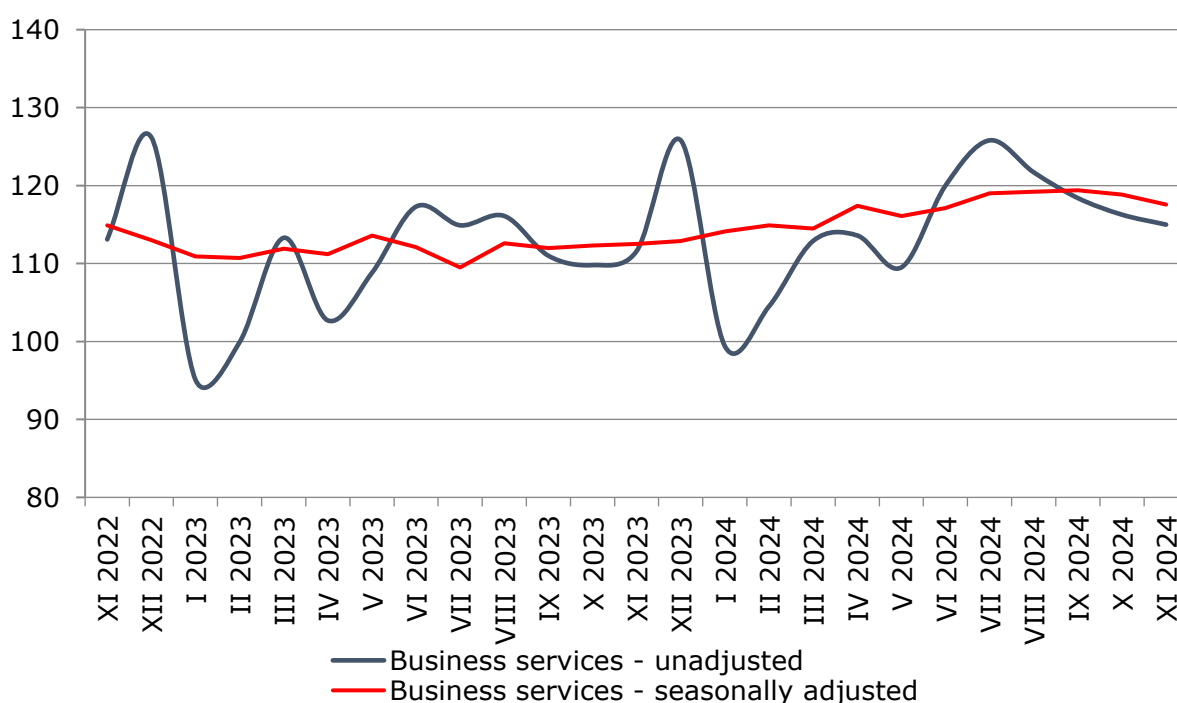


SERVICES PRODUCTION INDICES IN NOVEMBER 2024

In November 2024, the total production index in **Services of the business economy**¹ decreased by 1.1% compared to the previous month. The data are preliminary and seasonally adjusted.

Compared to November 2023, an increase of 3.2% was registered in the calendar-adjusted index according to preliminary data.

Figure 1. Production indices for Business services (2021 = 100)

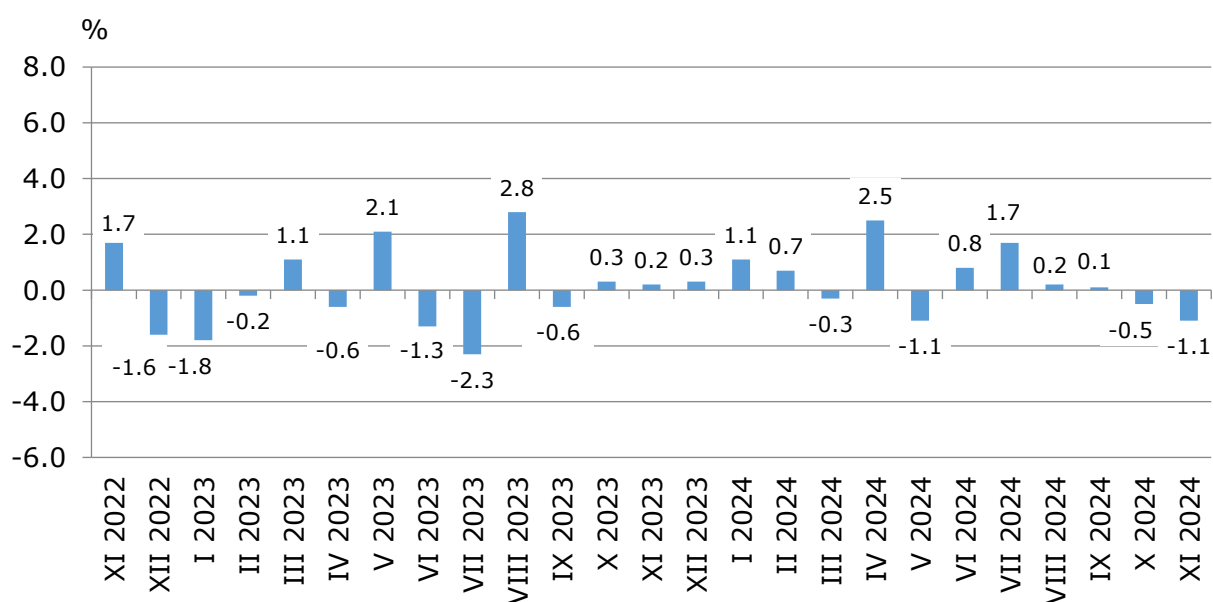


¹ Business services include the following sectors from NACE.BG - 2008: H - Transportation and storage, I - Accommodation and food service activities, J - Information and communication, L - Real estate activities, M_STG - Professional, scientific and technical activities (specific grouping under Regulation (EU) 2019/2152), and N - Administrative and support service activities.

Monthly changes

A decline, compared to the previous month, was reported in the following sectors: 'Real estate activities' - by 9.3%, 'Transportation and storage' - by 3.2% and 'Information and communication' - by 2.6%. An increase was seen in three sectors: 'Administrative and support service activities' - by 9.4%, 'Accommodation and food service activities' - by 0.8% and 'Professional, scientific and technical activities' - by 0.4%.

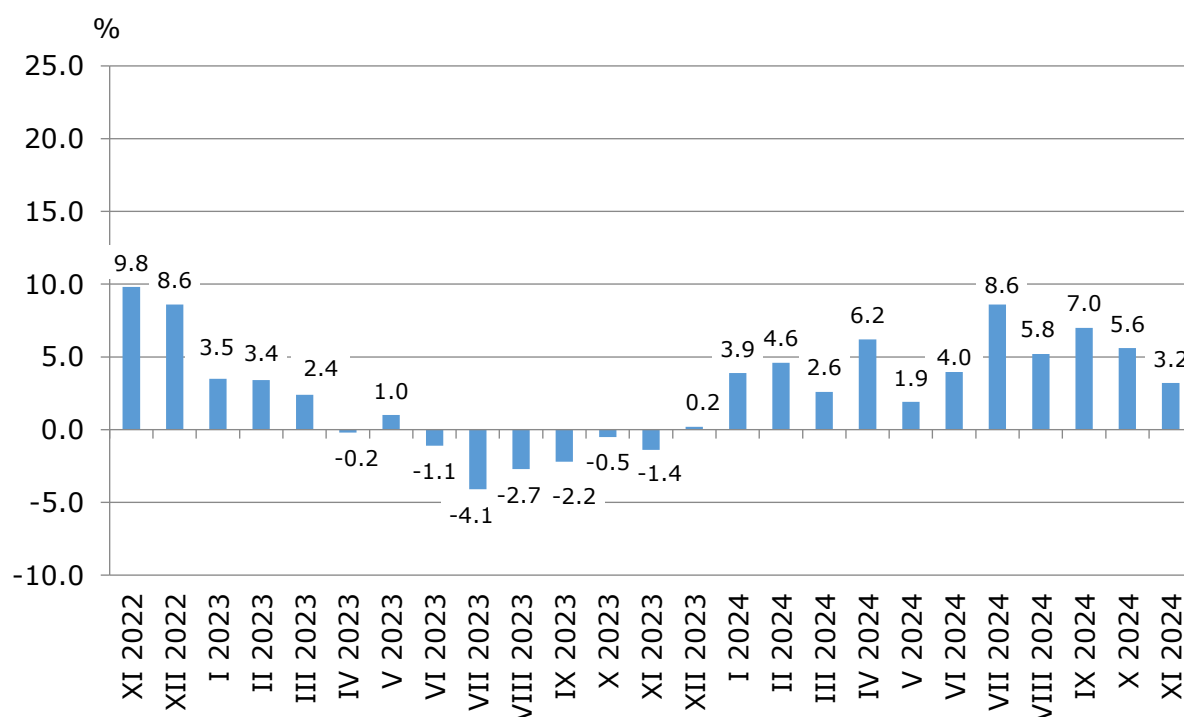
**Figure 2. Changes of production indices for Business services
compared to the previous month
(Seasonally adjusted data)**



Annual changes

On an annual basis, a rise was observed in the following sectors: 'Professional, scientific and technical activities' - by 10.8%, 'Information and communication' - by 8.0%, 'Accommodation and food service activities' - by 3.6% and 'Transportation and storage' - by 2.5%. A decrease was reported in the following sectors: 'Real estate activities' - by 20.4% and 'Administrative and support service activities' - by 2.5%.

Figure 3. Changes of production indices for Business services compared to the same month of the previous year (Calendar-adjusted data)



Methodological notes

Monthly indices of production in services are calculated and published two months after the reference period (M+2) in accordance with the requirements of Regulation (EU) 2019/2152 of the European Parliament and of the Council for European Business Statistics.

Production indices in services are calculated by deflating the turnover indices for each activity with the corresponding producer price indices. The purpose of the production index is to measure changes in output volume at monthly intervals. The indices are calculated with 2021 as a base year.

Seasonal adjustment is a statistical method, which eliminates the seasonal component of time series.

Calendar adjustment is an adjustment for variations caused by calendar effects, a different number of calendar and working days in the months, national holidays and outliers (for example, the presence of more non-working days in May could contribute to the decline in some activities). Since July 2024, all dynamic rows have been recalculated based on 2021 as base year and have been published in IS Infostat.

SERVICES PRODUCTION INDICES IN NOVEMBER 2024

Annex

Table 1

Changes of production indices in services¹ (Compared to the previous month)

(Per cent)

Economic activities	NACE.BG - 2008	2024					
		VI	VII	VIII	IX	X	XI*
Services of the business economy (except trade and financial and insurance activities)	HTNXK	0.8	1.7	0.2	0.1	-0.5	-1.1
Transportation and storage	H	0.0	1.4	-3.1	0.9	2.8	-3.2
Land transport and transport via pipelines	H49	0.6	1.1	-2.8	-0.2	2.9	-1.9
Water transport	H50	8.5	-2.5	6.1	-8.2	0.0	2.1
Air transport	H51	-11.4	-3.2	-10.0	19.6	15.5	-21.6
Warehousing and support activities for transportation	H52	0.9	1.6	-3.0	0.2	-1.4	-1.5
Postal and courier activities	H53	2.0	8.7	-2.1	-0.9	6.4	0.1
Accommodation and food service activities	I	1.6	0.7	-1.2	-1.1	0.4	0.8
Accommodation	I55	4.7	0.0	-1.2	-1.9	-4.4	-0.7
Food and beverage service activities	I56	-0.9	-1.4	4.1	-3.1	2.7	1.0
Information and communication	J	-0.8	3.3	0.4	1.9	-2.0	-2.6
Publishing activities	J58	-3.1	36.0	28.9	-44.6	0.4	1.5
Motion picture, video, television programme production; programming and broadcasting activities	J59	47.9	-10.8	-20.5	29.4	-4.9	-0.8
Programming and broadcasting activities	J60	-8.7	2.3	7.3	-3.2	-3.1	-5.2
Telecommunications	J61	0.6	0.0	-0.8	4.5	0.3	-1.7
Computer programming, consultancy and related activities	J62	-2.2	3.8	1.2	2.6	-3.4	-1.7
Information service activities	J63	-9.5	11.5	-6.3	6.5	-3.3	-15.2
Real estate activities	L	9.1	-9.0	1.5	5.1	-5.4	-9.3
Professional, scientific and technical activities (specific grouping under Regulation (EU) 2019/2152)	M_STS	0.3	7.5	5.4	-4.2	0.3	0.4
Legal and accounting activities	M69	-8.8	6.6	8.5	-3.1	-1.2	-7.4
Management consultancy activities	M702	14.2	17.9	14.8	-2.9	-10.8	7.7
Architectural and engineering activities; technical testing and analysis	M71	-12.2	14.9	-2.7	-0.7	7.5	2.8
Advertising and market research	M73	7.9	-7.1	0.3	-3.7	8.2	-6.2
Other professional, scientific and technical activities	M74	9.6	2.3	4.5	-11.5	2.6	4.0
Administrative and support service activities	N	1.8	-2.2	0.1	-0.8	-3.2	9.4
Rental and leasing activities	N77	4.0	2.3	-9.9	1.9	-4.8	-6.2
Employment activities	N78	-2.9	-8.5	1.6	2.9	-0.4	2.7
Travel agency, tour operator reservation service and related activities	N79	13.2	0.4	4.7	-13.1	-9.5	0.0
Security and investigation activities	N80	-4.0	-1.0	5.1	-1.8	-4.4	3.6
Services to buildings and landscape activities	N81	5.2	-7.0	-1.3	3.6	2.2	7.0
Office administrative, office support and other business support activities	N82	2.9	-3.0	-0.7	3.2	-0.4	38.9

¹ Seasonally adjusted data.

* Preliminary data.

SERVICES PRODUCTION INDICES IN NOVEMBER 2024

Table 2

Changes of production indices in services¹ (Compared to the same month of the previous year)

(Per cent)

Economic activities	NACE.BG - 2008	2024					
		VI	VII	VIII	IX	X	XI*
Services of the business economy (except trade and financial and insurance activities)	HTNXK	4.0	8.6	5.8	7.0	5.6	3.2
Transportation and storage	H	2.8	10.3	1.3	3.5	4.2	2.5
Land transport and transport via pipelines	H49	4.0	6.7	-1.3	1.1	2.3	2.9
Water transport	H50	3.9	8.6	7.4	4.0	-7.5	-6.0
Air transport	H51	6.0	18.2	-0.7	12.9	30.4	13.8
Warehousing and support activities for transportation	H52	-1.0	12.6	4.2	3.3	0.1	-3.0
Postal and courier activities	H53	5.1	23.4	13.3	11.9	16.8	17.3
Accommodation and food service activities	I	6.8	6.5	4.9	3.5	2.4	3.6
Accommodation	I55	20.3	20.6	15.8	16.3	9.6	5.6
Food and beverage service activities	I56	-2.2	-6.1	-5.5	-6.8	-1.2	1.8
Information and communication	J	2.8	15.3	11.7	13.8	12.2	8.0
Publishing activities	J58	-3.9	22.0	76.8	-7.3	5.0	-6.0
Motion picture, video, television programme production; programming and broadcasting activities	J59	32.7	17.5	-23.5	39.6	-11.3	35.3
Programming and broadcasting activities	J60	-25.5	-9.5	-13.5	-16.6	-11.3	-19.9
Telecommunications	J61	6.8	16.7	9.4	17.5	18.5	12.8
Computer programming, consultancy and related activities	J62	0.4	15.9	14.2	12.5	12.6	12.2
Information service activities	J63	2.4	7.0	1.8	16.7	5.1	-22.4
Real estate activities	L	13.6	-0.2	-0.6	7.3	2.6	-20.4
Professional, scientific and technical activities (specific grouping under Regulation (EU) 2019/2152)	M_STS	2.5	8.2	12.2	10.1	9.1	10.8
Legal and accounting activities	M69	23.2	12.5	28.6	18.6	20.1	2.8
Management consultancy activities	M702	14.2	56.9	129.2	72.6	41.4	54.2
Architectural and engineering activities; technical testing and analysis	M71	-27.3	-17.1	-14.0	-16.3	-2.1	8.5
Advertising and market research	M73	4.2	-8.1	-8.3	-17.8	-9.6	-12.0
Other professional, scientific and technical activities	M74	15.1	11.4	-21.5	3.6	5.1	10.0
Administrative and support service activities	N	2.4	-0.4	-0.6	-0.4	-7.0	-2.5
Rental and leasing activities	N77	-8.3	-13.7	-24.1	-22.6	-33.5	-39.7
Employment activities	N78	2.9	0.7	4.3	1.7	1.4	2.8
Travel agency, tour operator reservation service and related activities	N79	24.9	18.3	24.2	12.9	-0.5	-2.4
Security and investigation activities	N80	-0.8	-0.7	1.5	5.8	-0.9	-1.3
Services to buildings and landscape activities	N81	-1.2	-7.9	-7.9	-2.2	1.3	12.0
Office administrative, office support and other business support activities	N82	1.7	1.3	-0.1	4.3	4.3	29.8

¹ Calendar-adjusted data.

* Preliminary data.

SERVICES PRODUCTION INDICES IN NOVEMBER 2024

Table 3

Production indices in services - seasonally adjusted (2021 = 100)

NACE.BG - 2008	2023		2024*										
	XI	XII	I	II	III	IV	V	VI	VII	VIII	IX	X	XI
HTNXK	112.5	112.9	114.1	114.9	114.5	117.4	116.1	117.1	119.0	119.2	119.4	118.9	117.6
H	105.7	105.6	108.5	110.9	110.9	116.7	111.6	111.6	113.2	109.6	110.6	113.8	110.2
H49	101.2	101.4	104.0	107.9	106.0	111.2	104.8	105.5	106.6	103.6	103.4	106.5	104.4
H50	135.4	146.5	119.9	128.6	119.6	132.6	121.0	131.3	128.0	135.8	124.6	124.7	127.3
H51	202.0	201.4	212.2	221.8	228.8	271.4	284.6	252.3	244.1	219.8	263.0	303.6	238.1
H52	101.7	101.9	103.5	102.9	107.4	109.0	106.3	107.3	109.0	105.7	105.9	104.4	102.8
H53	115.6	110.2	123.2	120.5	116.3	129.1	117.5	119.9	130.3	127.5	126.3	134.5	134.5
I	135.4	138.0	137.0	139.5	139.6	140.3	138.4	140.6	141.5	139.8	138.3	138.8	139.9
I55	151.9	160.0	163.2	164.5	167.3	170.9	171.4	179.4	179.4	177.2	173.8	166.2	165.0
I56	123.6	123.3	121.2	122.7	122.8	122.2	122.3	121.2	119.5	124.4	120.6	123.8	125.1
J	107.1	110.0	113.5	114.8	114.1	115.4	117.4	116.4	120.3	120.7	123.1	120.6	117.4
J58	93.3	96.7	85.4	92.2	88.7	86.9	91.5	88.6	120.5	155.4	86.1	86.4	87.7
J59	79.0	109.2	94.8	105.4	104.9	93.5	83.3	123.2	109.9	87.4	113.1	107.5	106.7
J60	89.5	84.0	82.1	96.8	71.7	96.5	82.7	75.5	77.2	82.9	80.2	77.7	73.7
J61	110.3	109.3	113.2	119.3	117.5	117.2	121.6	122.3	122.4	121.3	126.8	127.1	125.0
J62	105.9	112.9	118.2	114.1	117.6	117.7	119.7	117.1	121.5	123.0	126.2	121.9	119.8
J63	124.4	109.9	116.4	119.3	106.3	120.4	120.7	109.2	121.8	114.1	121.6	117.6	99.7
L	104.9	98.0	94.5	96.4	93.3	100.7	96.4	105.1	95.6	97.1	102.0	96.4	87.5
M_STS	114.4	118.2	115.5	115.0	113.8	115.7	115.4	115.8	124.5	131.2	125.7	126.1	126.6
M69	115.3	115.0	116.5	118.8	111.8	111.7	128.5	117.2	124.9	135.5	131.3	129.7	120.1
M702	115.3	122.1	124.3	124.7	115.3	118.8	117.5	134.1	158.1	181.5	176.1	157.2	169.3
M71	113.3	121.7	109.0	108.6	115.8	118.0	112.5	98.8	113.5	110.4	109.6	117.8	121.2
M73	128.1	131.3	134.5	125.4	118.3	128.7	115.1	124.2	115.3	115.7	111.5	120.6	113.2
M74	103.6	104.4	100.4	102.5	108.7	104.5	103.0	112.9	115.4	120.6	106.8	109.5	113.9
N	123.7	116.4	118.9	114.0	116.6	116.2	117.8	119.9	117.3	117.3	116.4	112.7	123.3
N77	177.9	161.9	154.6	118.9	131.8	142.1	125.6	130.6	133.6	120.4	122.7	116.8	109.6
N78	115.4	107.5	113.0	112.3	116.6	97.8	124.6	120.9	110.7	112.5	115.8	115.3	118.4
N79	165.0	161.7	183.6	186.1	186.7	193.2	196.2	222.1	222.9	233.4	202.8	183.5	183.4
N80	101.5	97.9	97.6	101.9	100.2	100.5	102.9	98.7	97.8	102.8	100.9	96.4	99.9
N81	102.3	98.7	111.3	108.7	112.8	113.8	103.2	108.6	101.0	99.7	103.3	105.5	112.9
N82	113.5	105.4	107.2	106.4	106.5	106.2	107.8	110.9	107.6	106.8	110.3	109.9	152.7

* Preliminary data.

SERVICES PRODUCTION INDICES IN NOVEMBER 2024

Table 4

Production indices in services - calendar-adjusted (2021 = 100)

NACE.BG - 2008	2023		2024*										
	XI	XII	I	II	III	IV	V	VI	VII	VIII	IX	X	XI
HTNXK	110.9	126.7	98.9	104.4	114.2	112.0	111.6	123.4	129.0	125.7	122.1	117.3	114.4
H	107.5	102.0	93.2	101.9	114.1	115.8	110.2	115.6	126.2	111.1	111.4	118.7	110.2
H49	106.6	98.7	88.5	102.8	112.9	112.0	104.2	109.4	115.4	98.5	101.8	112.9	109.7
H50	124.0	141.9	90.7	104.8	117.5	135.3	130.2	135.8	153.3	151.0	129.5	134.9	116.6
H51	115.9	127.9	118.7	124.2	149.7	209.2	281.8	326.8	424.3	373.6	350.6	301.8	131.9
H52	103.6	99.6	94.5	94.5	111.3	110.3	103.4	105.1	116.6	106.8	104.3	108.0	100.5
H53	125.1	124.1	119.4	116.5	121.3	129.2	113.6	120.8	127.4	119.1	118.7	134.4	146.7
I	102.6	121.0	110.2	116.1	123.2	122.5	131.8	155.2	193.9	212.6	152.0	117.7	106.3
I55	99.9	124.7	123.0	133.2	135.4	136.8	147.3	203.6	279.1	315.3	202.7	121.9	105.5
I56	104.9	118.7	102.9	104.6	116.2	112.6	125.2	127.9	144.3	154.0	123.1	115.2	106.8
J	110.7	138.1	102.5	104.7	118.1	109.8	112.9	120.1	117.4	113.4	122.0	122.0	119.6
J58	96.8	111.6	71.5	72.9	73.3	77.2	82.4	93.7	135.1	149.8	105.7	89.0	91.0
J59	90.2	208.6	69.4	84.9	103.5	81.4	71.5	122.2	99.1	70.1	96.0	123.8	122.0
J60	125.4	88.1	56.1	89.6	74.7	99.6	87.4	79.0	64.5	60.1	75.0	95.8	100.5
J61	109.8	120.0	109.7	110.7	116.0	112.4	120.8	124.8	124.2	123.5	130.2	126.3	123.8
J62	107.1	151.6	104.0	103.4	127.4	111.3	113.2	122.6	115.6	111.1	122.4	123.5	120.1
J63	148.0	134.3	104.0	113.8	110.3	119.1	114.5	107.3	116.4	102.0	116.4	115.1	114.8
L	107.2	116.4	87.1	91.7	91.3	94.8	87.7	109.3	96.8	97.7	111.2	91.4	85.3
M_STS	115.9	161.0	97.3	106.4	115.2	112.3	108.2	124.3	127.1	125.9	123.2	123.4	128.4
M69	111.0	144.7	101.2	108.7	117.2	118.4	129.0	125.8	127.7	122.7	125.3	123.9	114.1
M702	108.6	146.9	120.1	125.9	105.5	108.6	101.7	155.1	179.0	197.9	195.9	145.4	167.4
M71	115.3	200.0	80.8	96.7	118.9	110.3	98.4	102.9	111.7	109.3	96.6	112.6	125.0
M73	151.9	174.3	96.8	106.7	116.9	129.3	115.2	128.9	111.3	98.8	105.0	134.8	133.7
M74	101.0	133.2	93.7	98.8	115.5	98.1	97.6	119.1	112.8	108.3	104.7	108.7	111.0
N	124.3	121.3	104.5	104.8	110.9	109.2	114.4	128.2	126.5	127.0	126.3	111.5	121.2
N77	191.9	187.8	139.9	109.7	126.6	129.1	124.7	131.2	140.3	121.7	124.9	112.4	115.7
N78	115.8	122.6	99.2	108.1	116.0	101.7	123.1	120.5	110.4	111.2	114.4	117.6	119.1
N79	98.3	113.2	105.0	115.4	126.4	139.4	162.0	301.7	326.0	370.5	323.1	167.3	96.0
N80	100.8	105.5	89.4	100.2	97.8	99.3	101.2	98.8	98.9	105.2	102.8	98.7	99.5
N81	101.1	104.2	94.8	98.6	110.2	112.7	106.6	116.5	109.9	103.4	102.9	106.0	113.2
N82	128.9	101.9	105.8	104.0	109.0	101.7	106.5	119.1	105.8	100.2	111.7	108.3	167.4

* Preliminary data.