



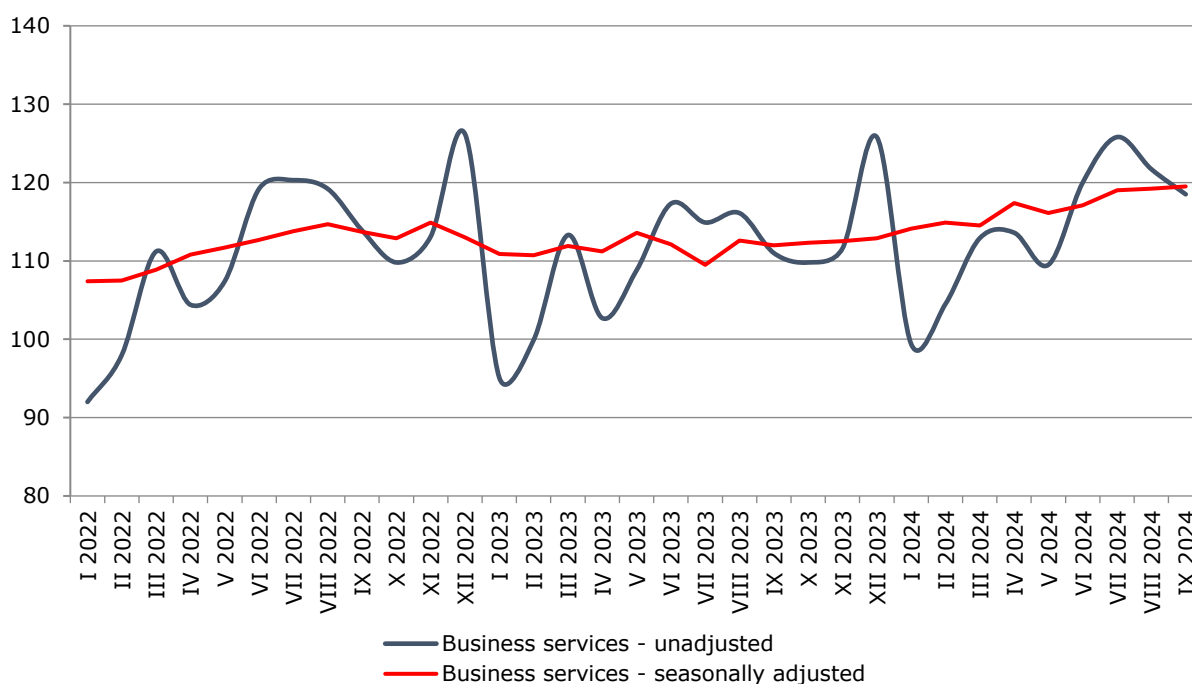
Since July 2024, NSI has started publishing Services Production Indices by base year 2021 = 100 in accordance with the requirements of Regulation (EU) 2019/2152 of the European Parliament and of the Council for European Business Statistics and Commission Implementing Regulation (EU) 2020/1197.

SERVICES PRODUCTION INDICES IN SEPTEMBER 2024

In September 2024, the total production index in **Services of the business economy**¹ increased by 0.2% compared to the previous month. The data are preliminary and seasonally adjusted.

Compared to September 2023, an increase of 7.0% was registered in the calendar-adjusted index according to preliminary data.

Figure 1. Production indices for Business services (2021 = 100)

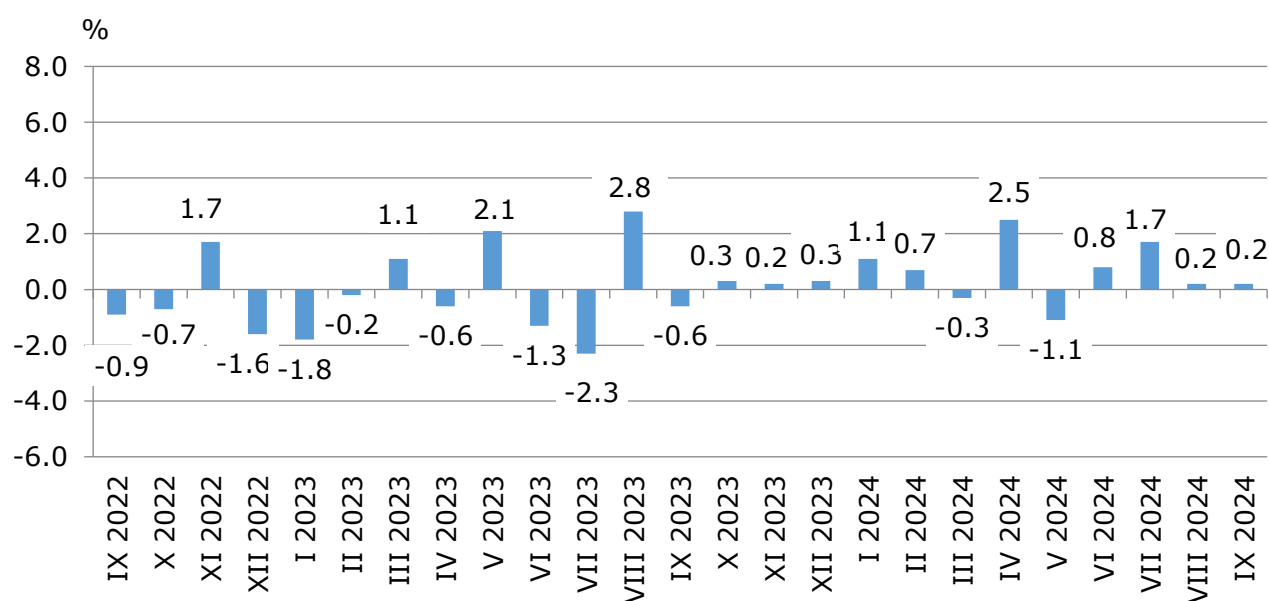


¹ Business services include the following sectors from NACE.BG - 2008: H - Transportation and storage, I - Accommodation and food service activities, J - Information and communication, L - Real estate activities, M_STS - Professional, scientific and technical activities (specific grouping under Regulation (EU) 2019/2152) and N - Administrative and support service activities.

Monthly changes

An increase, compared to the previous month, was reported in the following sectors: 'Real estate activities' - by 5.3%, 'Information and communication' - by 2.3%, 'Administrative and support service activities' - by 0.8% and 'Transportation and storage' - by 0.3%. A decline was seen in the following sectors: 'Professional, scientific and technical activities' - by 4.6% and 'Accommodation and food service activities' - by 0.9%.

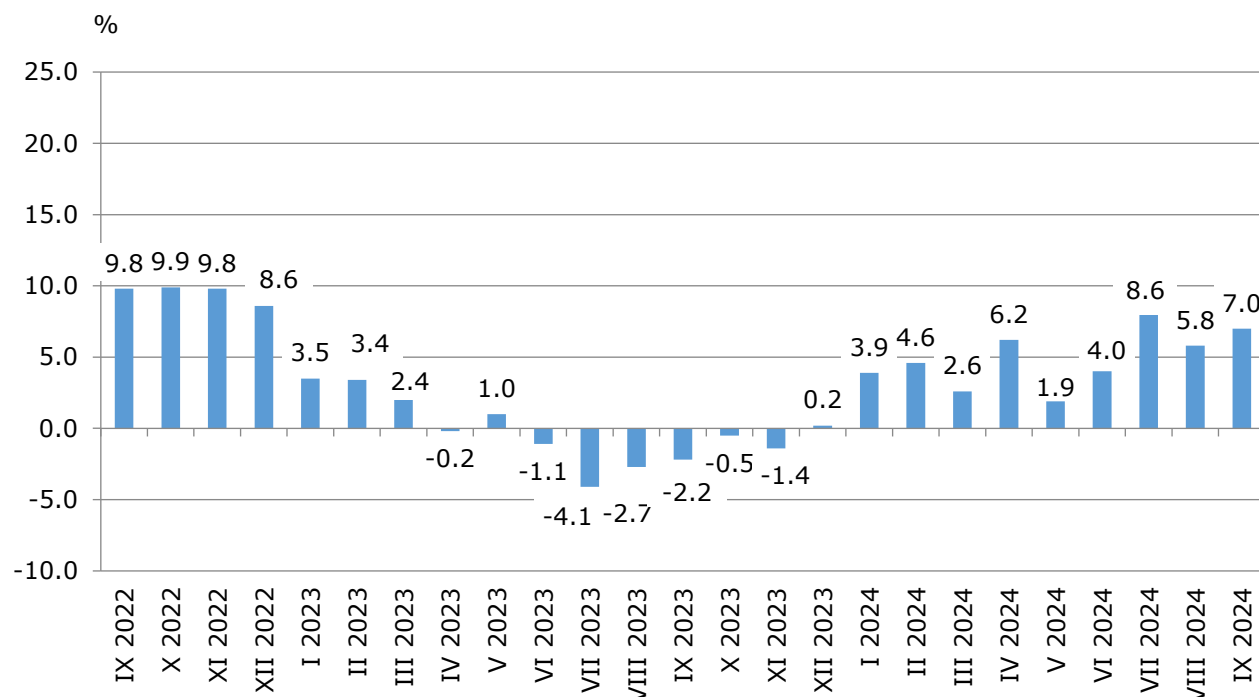
**Figure 2. Changes of production indices for Business services
compared to the previous month
(Seasonally adjusted data)**



Annual changes

On an annual basis, a rise was observed in the following sectors: 'Information and communication' - by 14.2%, 'Professional, scientific and technical activities' - by 10.1%, 'Real estate activities' - by 7.3%, 'Accommodation and food service activities' - by 3.5% and 'Transportation and storage' - by 2.9%. A decrease was reported only in sector 'Administrative and support service activities' - by 0.5%.

**Figure 3. Changes of production indices for Business services
compared to the same month of the previous year
(Calendar-adjusted data)**



Methodological notes

Monthly indices of production in services are calculated and published two months after the reference period (M+2) in accordance with the requirements of Regulation (EU) 2019/2152 of the European Parliament and of the Council for European Business Statistics.

Production indices in services are calculated by deflating the turnover indices for each activity with the corresponding producer price indices. The purpose of the production index is to measure changes in output volume at monthly intervals. The indices are calculated with 2021 as a base year.

Seasonal adjustment is a statistical method, which eliminates the seasonal component of time series.

Calendar adjustment is an adjustment for variations caused by calendar effects, a different number of calendar and working days in the months, national holidays and outliers (for example, the presence of more non-working days in May could contribute to the decline in some activities).

Since July 2024, all dynamic rows have been recalculated based on the 2021 base year and have been published in IS Infostat.

SERVICES PRODUCTION INDICES IN SEPTEMBER

Annex

Table 1

Changes of production indices in services¹ (Compared to the previous month)

(Per cent)

Economic activities	NACE.BG - 2008	2024					
		IV	V	VI	VII	VIII	IX*
Services of the business economy (except trade and financial and insurance activities)	HTNXK	2.5	-1.1	0.8	1.7	0.2	0.2
Transportation and storage	H	5.3	-4.4	0.0	1.4	-3.1	0.3
Land transport and transport via pipelines	H49	4.9	-5.7	0.6	1.1	-2.8	-0.1
Water transport	H50	10.8	-8.7	8.5	-2.5	6.1	-8.2
Air transport	H51	18.6	4.9	-11.4	-3.2	-10.0	7.8
Warehousing and support activities for transportation	H52	1.5	-2.4	0.9	1.6	-3.0	0.3
Postal and courier activities	H53	11.0	-9.0	2.0	8.7	-2.1	-1.2
Accommodation and food service activities	I	0.5	-1.4	1.6	0.7	-1.2	-0.9
Accommodation	I55	2.2	0.3	4.7	0.0	-1.2	0.5
Food and beverage service activities	I56	-0.5	0.0	-0.9	-1.4	4.1	0.2
Information and communication	J	1.1	1.7	-0.8	3.3	0.4	2.3
Publishing activities	J58	-2.1	5.3	-3.1	36.0	28.9	-44.7
Motion picture, video, television programme production; programming and broadcasting activities	J59	-10.9	-10.9	47.9	-10.8	-20.5	29.2
Programming and broadcasting activities	J60	34.6	-14.3	-8.7	2.3	7.3	-2.6
Telecommunications	J61	-0.3	3.8	0.6	0.0	-0.8	4.4
Computer programming, consultancy and related activities	J62	0.1	1.7	-2.2	3.8	1.2	3.4
Information service activities	J63	13.3	0.2	-9.5	11.5	-6.3	6.5
Real estate activities	L	8.0	-4.3	9.1	-9.0	1.5	5.3
Professional, scientific and technical activities (specific grouping under Regulation (EU) 2019/2152)	M_STS	1.7	-0.2	0.3	7.5	5.4	-4.6
Legal and accounting activities	M69	-0.1	15.0	-8.8	6.6	8.5	-3.2
Management consultancy activities	M702	3.0	-1.1	14.2	17.9	14.8	-3.3
Architectural and engineering activities; technical testing and analysis	M71	1.9	-4.7	-12.2	14.9	-2.7	-2.3
Advertising and market research	M73	8.8	-10.6	7.9	-7.1	0.3	-3.7
Other professional, scientific and technical activities	M74	-3.9	-1.5	9.6	2.3	4.5	-11.4
Administrative and support service activities	N	-0.4	1.4	1.8	-2.2	0.1	0.8
Rental and leasing activities	N77	7.8	-11.6	4.0	2.3	-9.9	2.7
Employment activities	N78	-16.1	27.4	-2.9	-8.5	1.6	2.9
Travel agency, tour operator reservation service and related activities	N79	3.5	1.6	13.2	0.4	4.7	-3.5
Security and investigation activities	N80	0.3	2.3	-4.0	-1.0	5.1	-1.7
Services to buildings and landscape activities	N81	0.9	-9.3	5.2	-7.0	-1.3	3.5
Office administrative, office support and other business support activities	N82	-0.3	1.5	2.9	-3.0	-0.7	3.0

¹ Seasonally adjusted data.

* Preliminary data.

SERVICES PRODUCTION INDICES IN SEPTEMBER

Table 2

Changes of production indices in services¹ (Compared to the same month of the previous year)

(Per cent)

Economic activities	NACE.BG - 2008	2024					
		IV	V	VI	VII	VIII	IX*
Services of the business economy (except trade and financial and insurance activities)	HTNXK	6.2	1.9	4.0	8.6	5.8	7.0
Transportation and storage	H	14.5	1.8	2.8	10.3	1.3	2.9
Land transport and transport via pipelines	H49	12.6	-1.1	4.0	6.7	-1.3	1.3
Water transport	H50	21.2	-7.9	3.9	8.6	7.4	4.0
Air transport	H51	7.1	38.8	6.0	18.2	-0.7	5.7
Warehousing and support activities for transportation	H52	17.5	0.4	-1.0	12.6	4.2	3.3
Postal and courier activities	H53	23.9	3.6	5.1	23.4	13.3	12.0
Accommodation and food service activities	I	12.1	8.8	6.8	6.5	4.9	3.5
Accommodation	I55	24.5	23.5	20.3	20.6	15.8	16.3
Food and beverage service activities	I56	2.2	1.9	-2.2	-6.1	-5.5	-6.4
Information and communication	J	10.6	13.1	2.8	15.3	11.7	14.2
Publishing activities	J58	-17.4	2.7	-3.9	22.0	76.8	-7.3
Motion picture, video, television programme production; programming and broadcasting activities	J59	-1.9	-10.8	32.7	17.5	-23.5	39.5
Programming and broadcasting activities	J60	2.6	-13.6	-25.5	-9.5	-13.5	-16.6
Telecommunications	J61	13.5	13.4	6.8	16.7	9.4	17.5
Computer programming, consultancy and related activities	J62	12.3	17.0	0.4	15.9	14.2	13.3
Information service activities	J63	5.3	8.4	2.4	7.0	1.8	16.5
Real estate activities	L	0.6	-4.5	13.6	-0.2	-0.6	7.3
Professional, scientific and technical activities (specific grouping under Regulation (EU) 2019/2152)	M_STS	-1.3	-11.4	2.5	8.2	12.2	10.1
Legal and accounting activities	M69	4.6	24.7	23.2	12.5	28.6	18.6
Management consultancy activities	M702	-6.7	-11.5	14.2	56.9	129.2	72.6
Architectural and engineering activities; technical testing and analysis	M71	-9.8	-31.1	-27.3	-17.1	-14.0	-16.6
Advertising and market research	M73	3.5	-8.0	4.2	-8.1	-8.3	-17.7
Other professional, scientific and technical activities	M74	5.2	-19.5	15.1	11.4	-21.5	3.6
Administrative and support service activities	N	-12.1	-4.8	2.4	-0.4	-0.6	-0.5
Rental and leasing activities	N77	-39.3	-33.6	-8.3	-13.7	-24.1	-22.6
Employment activities	N78	-21.3	8.2	2.9	0.7	4.3	1.7
Travel agency, tour operator reservation service and related activities	N79	23.9	24.1	24.9	18.3	24.2	12.9
Security and investigation activities	N80	3.3	5.7	-0.8	-0.7	1.5	5.8
Services to buildings and landscape activities	N81	11.2	-3.5	-1.2	-7.9	-7.9	-2.2
Office administrative, office support and other business support activities	N82	-4.2	-1.4	1.7	1.3	-0.1	3.9

¹ Calendar-adjusted data.

* Preliminary data.

SERVICES PRODUCTION INDICES IN SEPTEMBER

Table 3

Production indices in services - seasonally adjusted (2021 = 100)

NACE.BG - 2008	2023				2024*								
	IX	X	XI	XII	I	II	III	IV	V	VI	VII	VIII	IX
HTNXK	112.0	112.3	112.5	112.9	114.1	114.9	114.5	117.4	116.1	117.1	119.0	119.2	119.5
H	106.0	109.7	105.7	105.6	108.5	110.9	110.9	116.7	111.6	111.6	113.2	109.6	110.0
H49	102.4	104.2	101.2	101.4	104.0	107.9	106.0	111.2	104.8	105.5	106.6	103.6	103.5
H50	119.5	134.4	135.4	146.5	119.9	128.6	119.6	132.6	121.0	131.3	128.0	135.8	124.6
H51	223.4	266.1	202.0	201.4	212.2	221.8	228.8	271.4	284.6	252.3	244.1	219.8	237.0
H52	99.4	102.7	101.7	101.9	103.5	102.9	107.4	109.0	106.3	107.3	109.0	105.7	106.0
H53	112.3	116.4	115.6	110.2	123.2	120.5	116.3	129.1	117.5	119.9	130.3	127.5	126.0
I	132.0	134.5	135.4	138.0	137.0	139.5	139.6	140.3	138.4	140.6	141.5	139.8	138.6
I55	148.0	149.7	151.9	160.0	163.2	164.5	167.3	170.9	171.4	179.4	179.4	177.2	178.1
I56	123.4	123.8	123.6	123.3	121.2	122.7	122.8	122.2	122.3	121.2	119.5	124.4	124.7
J	108.4	107.2	107.1	110.0	113.5	114.8	114.1	115.4	117.4	116.4	120.3	120.7	123.5
J58	91.2	81.3	93.3	96.7	85.4	92.2	88.7	86.9	91.5	88.6	120.5	155.4	85.9
J59	81.9	121.6	79.0	109.2	94.8	105.4	104.9	93.5	83.3	123.2	109.9	87.4	112.9
J60	94.5	86.8	89.5	84.0	82.1	96.8	71.7	96.5	82.7	75.5	77.2	82.9	80.7
J61	108.1	107.6	110.3	109.3	113.2	119.3	117.5	117.2	121.6	122.3	122.4	121.3	126.7
J62	113.0	108.1	105.9	112.9	118.2	114.1	117.6	117.7	119.7	117.1	121.5	123.0	127.2
J63	104.5	112.5	124.4	109.9	116.4	119.3	106.3	120.4	120.7	109.2	121.8	114.1	121.5
L	96.5	94.5	104.9	98.0	94.5	96.4	93.3	100.7	96.4	105.1	95.6	97.1	102.2
M_STS	117.6	114.5	114.4	118.2	115.5	115.0	113.8	115.7	115.4	115.8	124.5	131.2	125.2
M69	112.2	108.3	115.3	115.0	116.5	118.8	111.8	111.7	128.5	117.2	124.9	135.5	131.1
M702	111.4	109.7	115.3	122.1	124.3	124.7	115.3	118.8	117.5	134.1	158.1	181.5	175.5
M71	128.7	120.2	113.3	121.7	109.0	108.6	115.8	118.0	112.5	98.8	113.5	110.4	107.8
M73	134.5	133.9	128.1	131.3	134.5	125.4	118.3	128.7	115.1	124.2	115.3	115.7	111.4
M74	102.4	103.8	103.6	104.4	100.4	102.5	108.7	104.5	103.0	112.9	115.4	120.6	106.9
N	119.3	120.1	123.7	116.4	118.9	114.0	116.6	116.2	117.8	119.9	117.3	117.3	118.2
N77	157.8	173.4	177.9	161.9	154.6	118.9	131.8	142.1	125.6	130.6	133.6	120.4	123.7
N78	113.9	113.6	115.4	107.5	113.0	112.3	116.6	97.8	124.6	120.9	110.7	112.5	115.7
N79	188.3	165.6	165.0	161.7	183.6	186.1	186.7	193.2	196.2	222.1	222.9	233.4	225.2
N80	95.6	96.7	101.5	97.9	97.6	101.9	100.2	100.5	102.9	98.7	97.8	102.8	101.0
N81	105.2	103.7	102.3	98.7	111.3	108.7	112.8	113.8	103.2	108.6	101.0	99.7	103.2
N82	109.4	108.1	113.5	105.4	107.2	106.4	106.5	106.2	107.8	110.9	107.6	106.8	110.0

* Preliminary data.

SERVICES PRODUCTION INDICES IN SEPTEMBER

Table 4

Production indices in services - calendar-adjusted (2021 = 100)

NACE.BG - 2008	2023				2024*								
	IX	X	XI	XII	I	II	III	IV	V	VI	VII	VIII	IX
HTNXK	114.1	111.1	110.9	126.7	98.9	104.4	114.2	112.0	111.6	123.4	129.0	125.7	122.1
H	107.6	113.9	107.5	102.0	93.2	101.9	114.1	115.8	110.2	115.6	126.2	111.1	110.8
H49	100.7	110.3	106.6	98.7	88.5	102.8	112.9	112.0	104.2	109.4	115.4	98.5	102.0
H50	124.5	145.8	124.0	141.9	90.7	104.8	117.5	135.3	130.2	135.8	153.3	151.0	129.5
H51	310.4	231.4	115.9	127.9	118.7	124.2	149.7	209.2	281.8	326.8	424.3	373.6	328.1
H52	101.0	107.9	103.6	99.6	94.5	94.5	111.3	110.3	103.4	105.1	116.6	106.8	104.3
H53	106.0	115.0	125.1	124.1	119.4	116.5	121.3	129.2	113.6	120.8	127.4	119.1	118.7
I	146.8	114.9	102.6	121.0	110.2	116.1	123.2	122.5	131.8	155.2	193.9	212.6	152.0
I55	174.3	111.3	99.9	124.7	123.0	133.2	135.4	136.8	147.3	203.6	279.1	315.3	202.7
I56	132.1	116.6	104.9	118.7	102.9	104.6	116.2	112.6	125.2	127.9	144.3	154.0	123.6
J	107.2	108.7	110.7	138.1	102.5	104.7	118.1	109.8	112.9	120.1	117.4	113.4	122.4
J58	114.1	84.8	96.8	111.6	71.5	72.9	73.3	77.2	82.4	93.7	135.1	149.8	105.7
J59	68.8	139.5	90.2	208.6	69.4	84.9	103.5	81.4	71.5	122.2	99.1	70.1	95.9
J60	89.9	108.0	125.4	88.1	56.1	89.6	74.7	99.6	87.4	79.0	64.5	60.1	75.0
J61	110.8	106.6	109.8	120.0	109.7	110.7	116.0	112.4	120.8	124.8	124.2	123.5	130.2
J62	108.8	109.7	107.1	151.6	104.0	103.4	127.4	111.3	113.2	122.6	115.6	111.1	123.3
J63	99.7	109.5	148.0	134.3	104.0	113.8	110.3	119.1	114.5	107.3	116.4	102.0	116.2
L	103.7	89.1	107.2	116.4	87.1	91.7	91.3	94.8	87.7	109.3	96.8	97.7	111.2
M_STS	111.9	113.1	115.9	161.0	97.3	106.4	115.2	112.3	108.2	124.3	127.1	125.9	123.1
M69	105.7	103.1	111.0	144.7	101.2	108.7	117.2	118.4	129.0	125.8	127.7	122.7	125.3
M702	113.5	102.8	108.6	146.9	120.1	125.9	105.5	108.6	101.7	155.1	179.0	197.9	195.9
M71	115.4	115.1	115.3	200.0	80.8	96.7	118.9	110.3	98.4	102.9	111.7	109.3	96.2
M73	127.7	149.2	151.9	174.3	96.8	106.7	116.9	129.3	115.2	128.9	111.3	98.8	105.1
M74	101.1	103.4	101.0	133.2	93.7	98.8	115.5	98.1	97.6	119.1	112.8	108.3	104.7
N	126.8	119.9	124.3	121.3	104.5	104.8	110.9	109.2	114.4	128.2	126.5	127.0	126.2
N77	161.5	169.0	191.9	187.8	139.9	109.7	126.6	129.1	124.7	131.2	140.3	121.7	125.0
N78	112.5	116.0	115.8	122.6	99.2	108.1	116.0	101.7	123.1	120.5	110.4	111.2	114.4
N79	286.1	168.1	98.3	113.2	105.0	115.4	126.4	139.4	162.0	301.7	326.0	370.5	323.1
N80	97.2	99.6	100.8	105.5	89.4	100.2	97.8	99.3	101.2	98.8	98.9	105.2	102.8
N81	105.2	104.7	101.1	104.2	94.8	98.6	110.2	112.7	106.6	116.5	109.9	103.4	102.9
N82	107.1	103.8	128.9	101.9	105.8	104.0	109.0	101.7	106.5	119.1	105.8	100.2	111.3

* Preliminary data.