



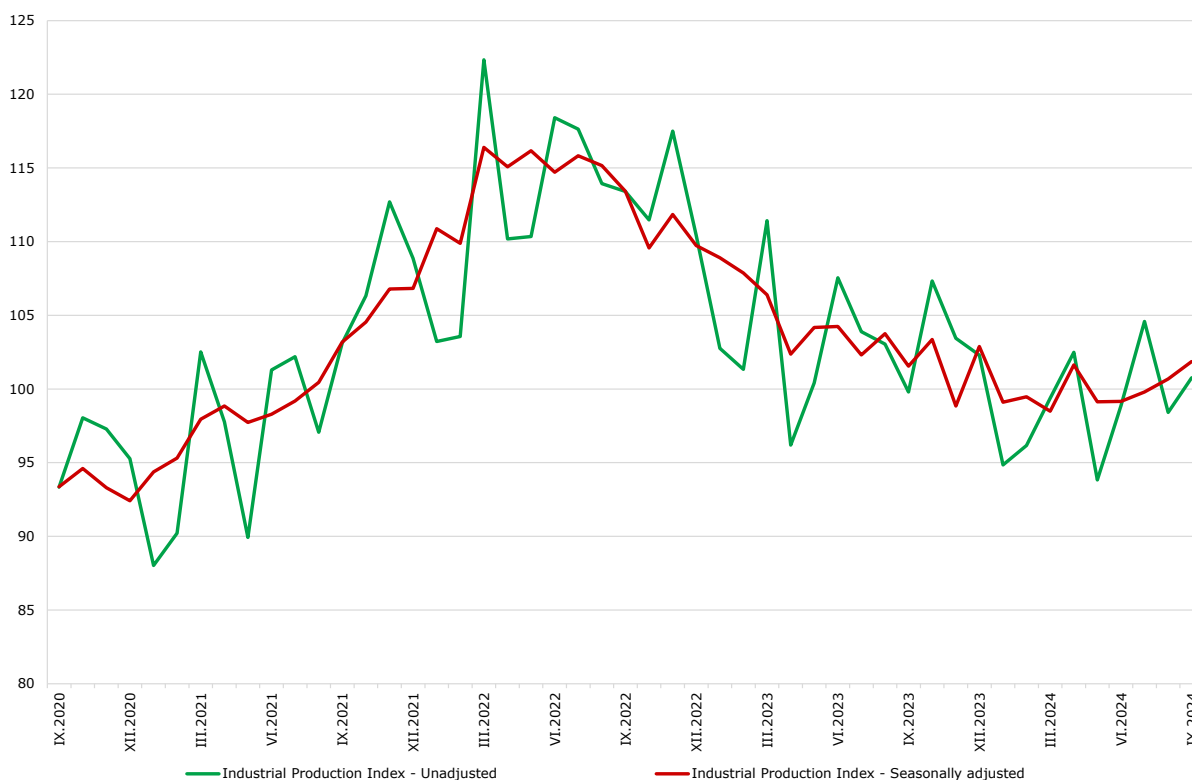
From July 2024, NSI started publishing Industrial Production Indices by base year 2021 = 100 in accordance with the requirements of Regulation (EU) 2019/2152 of the European Parliament and of the Council for European Business Statistics and Commission Implementing Regulation (EU) 2020/1197.

INDUSTRIAL PRODUCTION INDICES IN SEPTEMBER 2024

The Industrial Production Index went up by 1.2% in September 2024 compared to the previous month. The data are preliminary and seasonally adjusted.

In comparison with September 2023, an increase of 1.0% was registered in the calendar-adjusted Industrial Production Index.

Figure 1. Industrial Production Indices (2021 = 100)



INDUSTRIAL PRODUCTION INDICES IN SEPTEMBER 2024

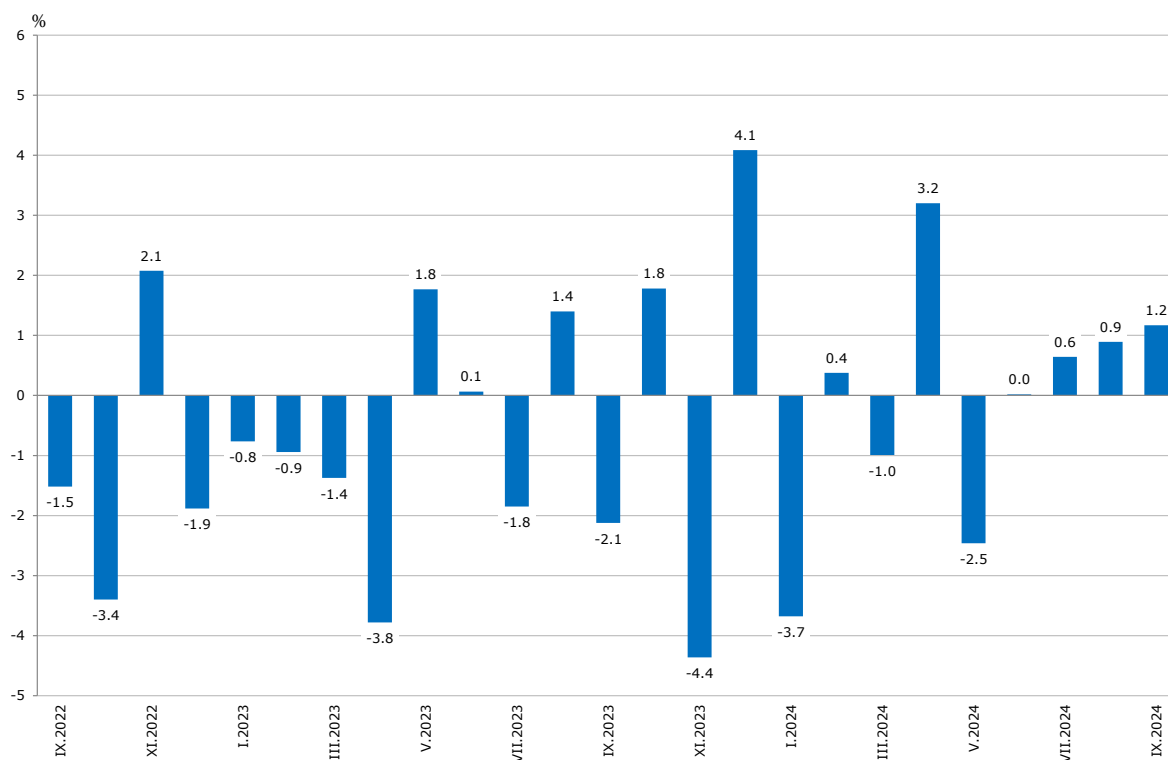
Monthly changes

In September 2024, compared to the previous month, a rise was seen in the electricity, gas, steam and air conditioning supply - by 24.5%, and in the mining and quarrying industry - by 9.8%, while a decrease was registered in the manufacturing - by 1.3%.

More significant decline in the manufacturing was reported in the manufacture of other transport equipment - by 24.4%, in the manufacture of basic pharmaceutical products and pharmaceutical preparations - by 13.0%, and in the other manufacturing - by 10.0%.

An increase was registered in the manufacture of textiles - by 17.3%, and in the repair and installation of machinery and equipment - by 9.6%.

Figure 2. Changes of Industrial Production Indices compared to the previous month
(Seasonally adjusted)



INDUSTRIAL PRODUCTION INDICES IN SEPTEMBER 2024

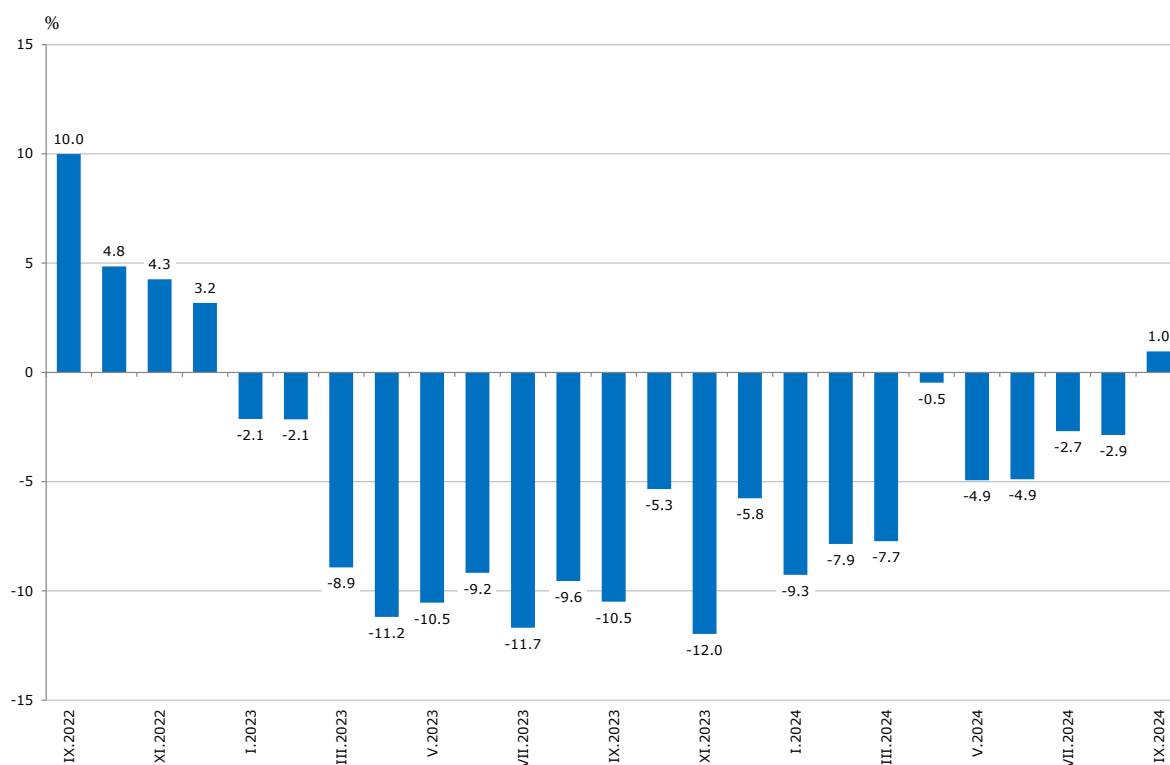
Annual changes

On an annual basis, a growth of the Industrial Production Index was observed in the mining and quarrying industry - by 30.9%, and in the electricity, gas, steam and air conditioning supply - by 13.0%, while a decrease was registered in the manufacturing - by 1.9%.

The most significant production decline in the manufacturing, compared to the same month of the previous year, was seen in the manufacture of leather and related products - by 29.8%, in the other manufacturing - by 29.0%, and in the manufacture of other transport equipment - by 23.0%.

A rise was registered in the manufacture of fabricated metal products, except machinery and equipment - by 27.3%, in the manufacture of wood and of products of wood and cork, except furniture; manufacture of articles of straw and plaiting materials - by 9.4%.

Figure 3. Changes of Industrial Production Indices compared to the same month of the previous year (Calendar-adjusted)



Methodological notes

Monthly indices of industrial production are calculated in accordance with the requirements of Regulation (EU) 2019/2152 of the European Parliament and of the Council on European Business Statistics.

The Monthly Industrial Production and Industrial Turnover Indices measure changes in production and turnover values of industrial enterprises. This information can be used to assess the current economic development and for short-term forecasts. Indices do not measure the actual production level; they aim to measure the average change in the value of production between two points in time. Indices are compiled based on information collected through a representative sampling survey on industrial enterprises. The sample covers enterprises with an annual turnover of more than 97% of the total turnover in the industry.

Industrial Production Indices are calculated at a constant base year, that is to say they are weighted with the structure of the value added at factor costs in the base year.

Seasonal adjustment is a statistical method, which eliminates the seasonal component of the time series.

Calendar adjustment is an adjustment for variations caused by calendar effects, different number of calendar and working days in the months, national holidays and outliers (for example, the presence of more non-working days in May could contribute to the decline in production in some activities).

Since July 2024, all dynamic rows have been recalculated based on the 2021 base year and have been published in the IS Infostat.

INDUSTRIAL PRODUCTION INDICES IN SEPTEMBER 2024

Annex

Table 1

Changes of Industrial Production Indices compared to the previous month¹

(Per cent)

Economic activities	NACE.BG - 2008	2024					
		IV	V	VI	VII	VIII	IX*
Industry	B_TO_E36	3.2	-2.5	0.0	0.6	0.9	1.2
Mining and quarrying	B	3.7	-10.3	1.6	8.5	22.2	9.8
Mining of coal and lignite	B05	-0.1	-17.7	20.7	25.8	-17.7	-9.8
Extraction of crude petroleum and natural gas	B06
Mining of metal ores	B07	4.4	-4.9	-1.3	-0.3	11.6	6.5
Other mining and quarrying	B08	1.8	-9.6	-2.1	1.1	-0.9	-6.5
Mining support service activities	B09
Manufacturing	C	0.6	-2.8	2.6	-0.7	1.9	-1.3
Manufacture of food products	C10	2.2	-7.1	4.7	0.5	0.1	-1.1
Manufacture of beverages	C11	9.1	-9.3	4.4	-0.8	-0.6	3.5
Manufacture of tobacco products	C12	0.2	-10.9	-15.0	16.2	13.1	0.6
Manufacture of textiles	C13	0.5	2.9	3.4	-5.4	-7.2	17.3
Manufacture of wearing apparel	C14	-1.0	1.3	3.0	-1.5	-2.0	-1.2
Manufacture of leather and related products	C15	6.0	-2.0	-5.2	-1.2	1.3	-4.7
Manufacture of wood and of products of wood and cork, except furniture; manufacture of articles of straw and plaiting materials	C16	-5.6	-2.7	0.1	-1.3	-1.6	6.7
Manufacture of paper and paper products	C17	7.2	-2.4	0.9	6.0	-8.4	5.4
Printing and reproduction of recorded media	C18	1.1	-2.4	5.4	-7.3	-3.9	6.2
Manufacture of coke and refined petroleum products	C19
Manufacture of chemicals and chemical products	C20	8.6	0.8	7.9	-13.9	8.9	-4.8
Manufacture of basic pharmaceutical products and pharmaceutical preparations	C21	-8.1	1.4	-2.1	-0.8	10.0	-13.0
Manufacture of rubber and plastic products	C22	4.0	-3.2	2.3	-0.3	-0.4	1.6
Manufacture of other non-metallic mineral products	C23	3.5	-11.8	4.6	5.0	-9.3	-0.4
Manufacture of basic metals	C24	3.6	-0.6	3.4	-17.8	-7.3	7.5
Manufacture of fabricated metal products, except machinery and equipment	C25	6.9	-5.1	-0.4	13.1	6.5	-6.3
Manufacture of computer, electronic and optical products	C26	-0.5	-4.6	8.0	2.8	-3.3	4.2
Manufacture of electrical equipment	C27	-9.0	-0.9	6.0	2.0	4.2	-5.2
Manufacture of machinery and equipment n.e.c.	C28	-3.0	-3.0	0.0	-1.7	10.3	1.1
Manufacture of motor vehicles, trailers and semi-trailers	C29	13.1	-9.5	-7.0	9.5	-0.3	-5.9
Manufacture of other transport equipment	C30	-1.4	-1.3	-3.9	-7.2	52.1	-24.4
Manufacture of furniture	C31	-5.5	0.4	-4.9	-1.1	8.3	-3.4
Other manufacturing	C32	-0.7	-1.8	2.9	-2.9	-6.1	-10.0
Repair and installation of machinery and equipment	C33	21.6	-9.1	-0.9	-2.7	0.1	9.6
Electricity, gas, steam and air conditioning supply	D	13.4	6.0	-23.8	24.6	-17.0	24.5
Electricity, gas, steam and air conditioning supply	D35	13.4	6.0	-23.8	24.6	-17.0	24.5

¹ Seasonally adjusted.

* Preliminary data.

„..“ - Confidential data.

INDUSTRIAL PRODUCTION INDICES IN SEPTEMBER 2024

Table 2

Changes of Industrial Production Indices compared to the same month of the previous year²

(Per cent)

Economic activities	NACE.BG - 2008	2024					
		IV	V	VI	VII	VIII	IX*
Industry	B_TO_E36	-0.5	-4.9	-4.9	-2.7	-2.9	1.0
Mining and quarrying	B	-7.7	-15.9	-16.9	-1.6	15.4	30.9
Mining of coal and lignite	B05	-50.6	-56.2	-24.0	-8.8	-27.1	-17.2
Extraction of crude petroleum and natural gas	B06
Mining of metal ores	B07	5.8	-9.6	-19.7	-5.6	8.4	23.5
Other mining and quarrying	B08	13.4	-9.8	-12.5	-0.1	-0.3	-1.6
Mining support service activities	B09
Manufacturing	C	-1.8	-6.5	-2.0	-3.9	-1.9	-1.9
Manufacture of food products	C10	0.6	-6.9	6.0	2.6	2.7	-0.7
Manufacture of beverages	C11	7.0	-6.0	0.6	-1.9	-0.6	4.5
Manufacture of tobacco products	C12	10.0	-5.1	-27.9	39.5	-19.7	1.1
Manufacture of textiles	C13	-15.7	-11.5	-4.2	-7.8	-24.3	1.7
Manufacture of wearing apparel	C14	-18.6	-15.1	-15.3	-10.5	-9.2	-17.1
Manufacture of leather and related products	C15	-23.9	-26.6	-31.5	-22.9	-21.7	-29.8
Manufacture of wood and of products of wood and cork, except furniture; manufacture of articles of straw and plaiting materials	C16	1.8	-6.4	-2.0	-0.8	0.0	9.4
Manufacture of paper and paper products	C17	5.8	1.5	-1.1	15.8	11.0	4.8
Printing and reproduction of recorded media	C18	9.0	3.3	6.5	2.7	-1.0	2.3
Manufacture of coke and refined petroleum products	C19
Manufacture of chemicals and chemical products	C20	7.5	20.5	34.5	9.4	11.6	5.6
Manufacture of basic pharmaceutical products and pharmaceutical preparations	C21	10.5	12.8	6.7	6.2	17.8	-4.9
Manufacture of rubber and plastic products	C22	-3.0	-9.4	-2.8	-0.5	-0.3	-1.2
Manufacture of other non-metallic mineral products	C23	5.1	-8.4	0.5	3.3	-5.6	-3.3
Manufacture of basic metals	C24	34.4	19.3	25.2	-2.9	-19.4	-15.5
Manufacture of fabricated metal products, except machinery and equipment	C25	9.0	2.6	4.3	12.5	15.1	27.3
Manufacture of computer, electronic and optical products	C26	-20.0	-25.1	-14.0	-5.6	-13.9	1.7
Manufacture of electrical equipment	C27	-22.1	-22.0	-19.1	-15.0	-8.2	-9.1
Manufacture of machinery and equipment n.e.c.	C28	-13.4	-20.8	-15.9	-17.4	-1.9	-5.5
Manufacture of motor vehicles, trailers and semi-trailers	C29	7.9	-12.7	-16.2	-2.1	-10.6	-13.6
Manufacture of other transport equipment	C30	-23.1	-29.4	-28.1	-41.2	-1.4	-23.0
Manufacture of furniture	C31	-13.3	-3.8	-15.2	-8.5	5.2	3.9
Other manufacturing	C32	-22.2	-24.6	-22.0	-25.8	-32.0	-29.0
Repair and installation of machinery and equipment	C33	2.9	-3.9	-4.9	-0.1	-8.9	4.4
Electricity, gas, steam and air conditioning supply	D	9.9	18.4	-18.3	12.9	-10.3	13.0
Electricity, gas, steam and air conditioning supply	D35	9.9	18.4	-18.3	12.9	-10.3	13.0

² Calendar-adjusted.

* Preliminary data.

„..“ - Confidential data.

INDUSTRIAL PRODUCTION INDICES IN SEPTEMBER 2024

Table 3

Industrial Production Indices (Seasonally adjusted, 2021 = 100)

NACE.BG - 2008	2023				2024								
	IX	X	XI	XII	I	II	III	IV	V	VI	VII	VIII	IX*
B_TO_E36	101.5	103.4	98.8	102.9	99.1	99.5	98.5	101.6	99.1	99.2	99.8	100.7	101.9
B	87.6	95.0	90.6	100.3	88.7	80.2	81.8	84.8	76.0	77.2	83.8	102.4	112.4
B05	53.6	64.7	58.6	69.1	51.7	34.7	47.1	47.0	38.7	46.7	58.8	48.4	43.6
B06
B07	110.7	112.7	112.0	114.8	110. ₃	104.6	101.9	106.4	101.2	100.0	99.6	111.2	118.4
B08	82.2	100.2	86.8	90.1	88.3	105.9	97.3	99.0	89.5	87.6	88.6	87.8	82.0
B09
C	107.6	108.2	104.7	106.6	103.₄	106.6	105.2	105.9	103.0	105.6	104.9	106.9	105.5
C10	103.0	105.8	102.6	102.9	106. ₅	104.6	103.6	105.8	98.3	103.0	103.6	103.7	102.5
C11	105.2	105.6	111.7	106.0	110. ₈	111.2	103.4	112.8	102.4	106.9	106.0	105.4	109.1
C12	81.3	57.8	63.8	67.4	54.9	66.0	79.0	79.2	70.5	59.9	69.6	78.7	79.2
C13	68.1	65.0	71.2	65.4	62.5	66.4	61.8	62.1	63.9	66.1	62.5	58.0	68.0
C14	105.3	101.2	97.7	99.1	93.7	92.0	88.7	87.8	88.9	91.6	90.2	88.4	87.3
C15	84.2	76.0	85.0	78.4	66.1	70.0	63.7	67.5	66.1	62.7	61.9	62.7	59.8
C16	84.5	90.3	88.2	84.6	96.7	102.6	96.5	91.1	88.7	88.7	87.6	86.2	91.9
C17	92.7	94.6	95.7	90.0	90.2	92.3	89.3	95.7	93.4	94.2	99.9	91.5	96.4
C18	91.2	90.0	91.7	107.3	97.8	95.0	94.8	95.9	93.5	98.6	91.4	87.8	93.2
C19
C20	98.7	111.3	91.7	96.5	97.3	100.1	99.1	107.6	108.5	117.1	100.8	109.7	104.4
C21	111.4	115.1	105.4	94.3	113. ₄	125.5	126.3	116.1	117.7	115.2	114.3	125.7	109.3
C22	86.7	86.1	87.0	86.6	80.8	79.9	81.9	85.2	82.5	84.4	84.1	83.8	85.1
C23	87.8	87.4	84.0	102.8	88.9	101.9	94.3	97.6	86.1	90.0	94.5	85.8	85.4
C24	116.6	108.9	106.6	104.9	105. ₇	114.9	114.6	118.8	118.1	122.0	100.3	92.9	99.9
C25	128.7	152.1	138.9	133.5	154. ₄	147.7	143.7	153.6	145.8	145.2	164.3	175.0	163.9
C26	104.5	98.6	96.0	93.7	105. ₇	125.2	99.7	99.2	94.7	102.2	105.1	101.6	105.9
C27	107.0	101.6	98.7	104.4	97.2	107.9	101.3	92.2	91.3	96.8	98.8	103.0	97.6
C28	100.5	95.1	93.0	98.1	86.0	92.8	90.7	88.0	85.3	85.4	83.9	92.6	93.6
C29	122.8	135.1	119.0	109.5	125. ₉	120.7	112.1	126.8	114.8	106.7	116.9	116.5	109.6
C30	129.4	106.9	92.5	103.5	77.7	85.4	100.8	99.4	98.2	94.4	87.5	133.1	100.6
C31	76.1	72.8	75.7	87.2	81.9	81.4	84.3	79.7	80.0	76.1	75.3	81.5	78.8
C32	137.2	146.2	126.4	140.4	137. ₄	123.2	119.8	119.0	116.8	120.2	116.8	109.7	98.7
C33	116.9	125.2	117.0	124.0	117. ₇	111.7	103.8	126.2	114.8	113.7	110.6	110.8	121.4
D	79.8	78.8	77.9	87.6	83.3	80.6	75.5	85.6	90.7	69.2	86.2	71.5	89.0
D35	79.8	78.8	77.9	87.6	83.3	80.6	75.5	85.6	90.7	69.2	86.2	71.5	89.0

* Preliminary data.

„..“ - Confidential data.

INDUSTRIAL PRODUCTION INDICES IN SEPTEMBER 2024

Table 4

Industrial Production Indices (Calendar-adjusted, 2021 = 100)

NACE.BG - 2008	2023				2024								
	IX	X	XI	XII	I	II	III	IV	V	VI	VII	VIII	IX*
B_TO_E36	101.5	107.6	102.4	105.8	93.9	94.0	101.8	98.8	94.8	101.3	103.1	98.6	102.5
B	91.3	106.3	97.3	110.4	86.5	76.4	79.7	78.3	70.8	74.1	80.8	101.3	119.6
B05	59.7	87.9	75.1	88.7	67.8	37.1	40.2	25.9	17.5	24.2	51.3	44.0	49.5
B06
B07	111.5	116.4	115.0	129.4	111.0	99.4	97.6	109.8	96.7	97.2	87.6	115.5	137.7
B08	87.8	113.5	96.1	91.1	63.7	85.4	93.8	96.7	92.4	93.7	92.4	90.9	86.4
B09
C	108.7	115.4	107.9	103.9	93.7	98.6	108.5	105.7	102.0	111.4	108.7	103.6	106.7
C10	107.0	115.8	106.1	106.7	97.6	92.4	104.5	102.6	97.2	103.9	103.2	104.8	106.3
C11	114.2	99.1	103.4	98.4	80.8	80.9	96.5	109.8	103.9	127.7	131.0	129.8	119.4
C12	87.9	60.9	62.2	62.8	32.8	43.8	80.0	85.4	80.9	72.5	87.8	84.7	88.8
C13	66.8	68.4	76.3	60.3	57.8	67.0	66.0	60.5	67.4	71.4	63.0	47.3	67.9
C14	104.5	103.5	97.5	95.9	98.1	92.2	89.7	79.1	81.9	98.0	102.0	82.5	86.6
C15	84.4	80.9	95.4	72.7	64.7	67.8	68.5	64.4	62.0	66.9	68.0	50.8	59.3
C16	86.7	96.2	93.7	78.9	81.8	91.5	98.0	91.7	92.8	93.3	93.6	83.5	94.9
C17	91.0	100.8	99.7	84.0	88.3	88.1	93.1	93.2	93.4	97.9	103.2	85.9	95.3
C18	87.9	96.4	103.4	113.9	87.9	86.6	96.6	94.2	93.4	101.9	90.8	81.1	89.9
C19
C20	97.4	112.4	93.6	95.6	91.7	94.9	108.6	109.4	107.6	120.8	101.5	104.6	102.9
C21	106.8	120.1	110.4	98.1	109.4	116.3	139.0	115.8	115.8	123.5	111.2	114.6	101.6
C22	88.7	95.0	87.7	77.7	74.4	75.6	85.9	84.4	82.7	88.7	87.9	79.0	87.6
C23	94.0	97.3	90.1	92.4	64.3	85.1	93.3	99.9	91.0	95.3	102.8	89.8	90.9
C24	112.3	113.6	108.8	102.1	107.5	112.2	122.7	119.3	119.5	123.3	97.3	83.1	94.9
C25	129.6	158.8	152.6	139.9	120.7	132.3	144.3	156.8	142.0	152.8	176.9	173.4	165.0
C26	104.2	110.4	99.4	88.5	101.4	122.2	102.6	97.8	92.2	107.3	109.0	89.8	106.1
C27	110.1	106.8	103.6	94.6	90.5	108.6	107.4	89.6	85.7	104.9	103.2	96.1	100.1
C28	101.0	101.5	98.3	93.6	77.3	89.6	96.3	90.0	84.2	90.9	87.4	81.5	95.4
C29	125.9	148.8	131.8	99.4	127.3	122.9	119.2	125.0	110.8	108.4	107.9	103.6	108.8
C30	126.1	112.4	93.4	88.3	61.2	80.4	113.2	104.1	99.7	104.3	89.0	130.0	97.1
C31	77.0	77.7	80.5	87.5	72.2	75.1	87.2	78.2	79.0	81.2	77.9	77.7	80.0
C32	144.8	160.3	135.0	127.8	120.0	108.1	121.2	115.3	114.4	137.5	117.7	110.0	102.8
C33	122.6	130.1	128.3	165.1	86.2	95.7	104.3	114.9	108.9	116.9	112.0	107.8	127.9
D	68.2	68.8	77.6	114.9	101.0	81.5	81.5	72.0	70.0	64.1	91.9	76.2	77.1
D35	68.2	68.8	77.6	114.9	101.0	81.5	81.5	72.0	70.0	64.1	91.9	76.2	77.1

* Preliminary data.

„..“ - Confidential data.