

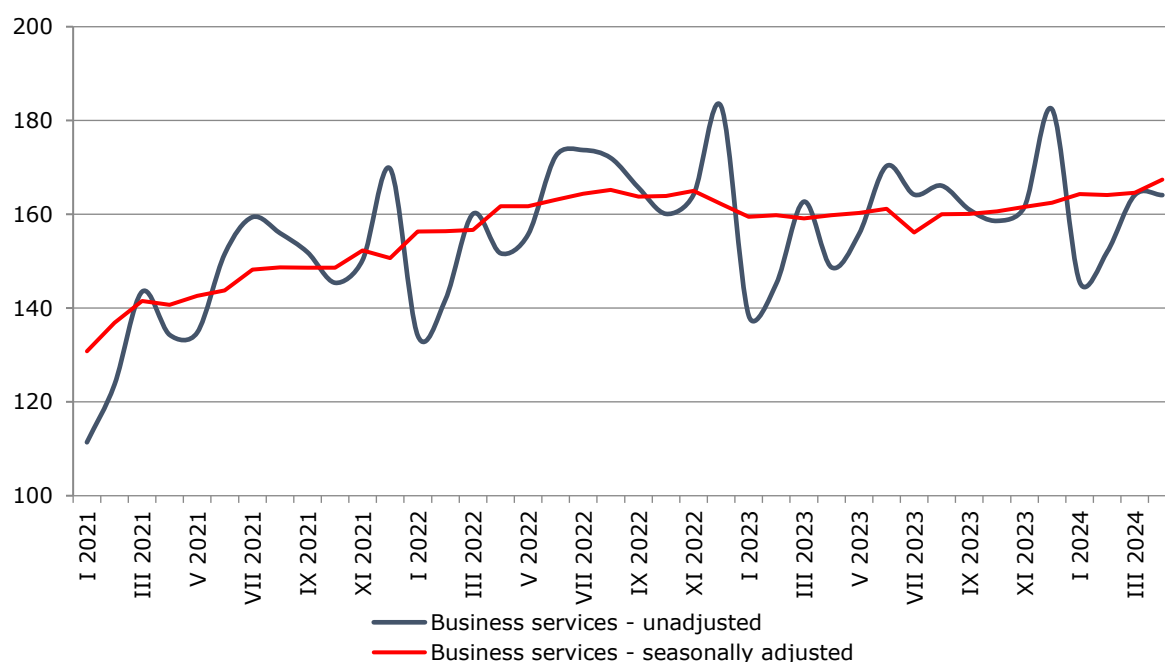


SERVICES PRODUCTION INDICES IN APRIL 2024

The total production index in **Services of the business economy**¹ increased by 1.7% in April 2024 compared to the previous month. The data are preliminary and seasonally adjusted.

Compared to April 2023, an increase of 6.0% was registered in the calendar-adjusted index according to preliminary data.

Figure 1. Production indices for Business services (2015=100)

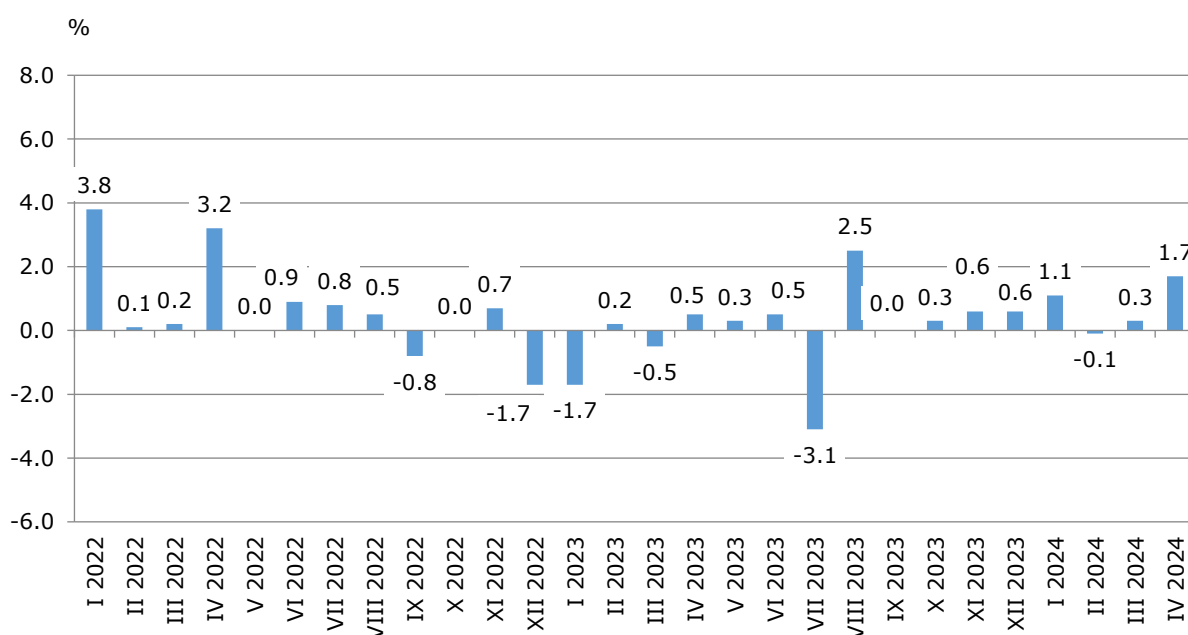


¹ Business services include the following sectors from NACE.BG – 2008: H - Transportation and storage, I - Accommodation and food service activities, J - Information and communication, L - Real estate activities, M_STS - Professional, scientific and technical activities (specific grouping under Regulation (EU) 2019/2152) and N - Administrative and support service activities.

Monthly changes

An increase, compared to the previous month, was registered in sectors: 'Transportation and storage' and 'Real estate activities' - both by 3.1%, 'Information and communication' - by 1.8%, 'Accommodation and food service activities' - by 0.9% and 'Administrative and support service activities' - by 0.8%. A decline was seen in sector 'Professional, scientific and technical activities' - by 0.1%.

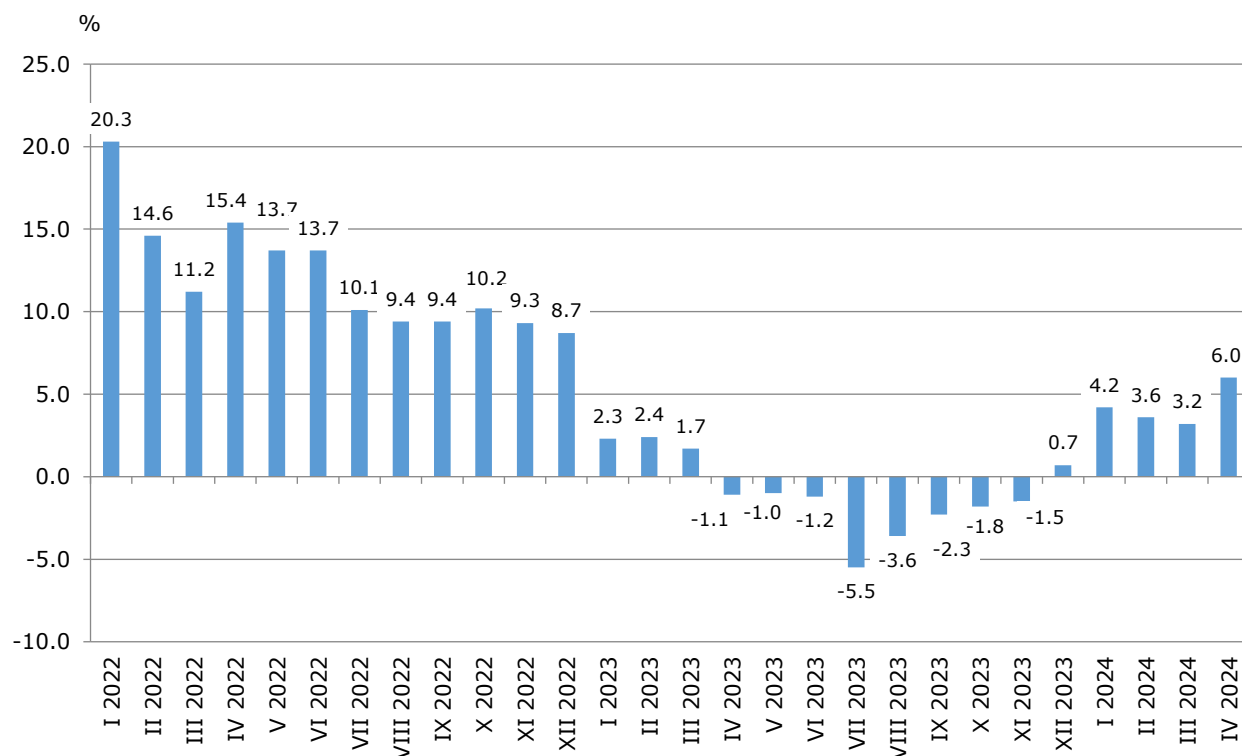
**Figure 2. Changes of production indices for Business services
compared to the previous month
(Seasonally adjusted data)**



Annual changes

On an annual basis, a rise was observed in the following sectors: 'Accommodation and food service activities' - by 14.3%, 'Transportation and storage' - by 12.5%, 'Information and communication' - by 11.4% and 'Real estate activities' - by 1.6%. A decrease was reported in sectors 'Administrative and support service activities' - by 10.0% and 'Professional, scientific and technical activities' - by 5.5%.

**Figure 3. Changes of production indices for Business services
compared to the same month of the previous year
(Calendar-adjusted data)**



Methodological notes

Monthly indices of production in services are calculated and published two months after the reference period (M+2) in accordance with the requirements of Regulation (EU) 2019/2152 of the European Parliament and of the Council for European Business Statistics. Production indices in services are calculated by deflating the turnover indices for each activity with the corresponding producer price indices. The purpose of the production index is to measure changes in output volume at monthly intervals. The indices are calculated with 2015 as a base year.

Seasonal adjustment is a statistical method, which eliminates the seasonal component of time series.

Calendar adjustment is an adjustment for variations caused by calendar effects, a different number of calendar and working days in the months, national holidays and outliers (for example, the presence of more non-working days in May could contribute to the decline in some activities).

Annex

Table 1

**Changes of production indices in services¹
(Compared to the previous month)**

(Per cent)

Economic activities	NACE.BG - 2008	2023		2024			
		XI	XII	I	II	III	IV*
Services of the business economy (except trade and financial and insurance activities)	HTNXK	0.6	0.6	1.1	-0.1	0.3	1.7
Transportation and storage	H	-3.6	1.8	0.8	0.2	2.3	3.1
Land transport and transport via pipelines	H49	-4.1	3.6	-1.6	2.4	1.8	1.4
Water transport	H50	-1.8	9.0	-8.8	7.3	2.6	1.9
Air transport	H51	-24.0	-1.4	6.8	4.7	4.6	18.6
Warehousing and support activities for transportation	H52	-1.1	-0.4	3.2	-4.0	4.8	2.4
Postal and courier activities	H53	-0.8	-1.5	7.5	-1.5	-2.8	10.7
Accommodation and food service activities	I	0.5	2.3	0.3	1.5	0.7	0.9
Accommodation	I55	0.8	4.6	-0.7	0.2	1.3	1.0
Food and beverage service activities	I56	-0.1	0.4	-4.1	4.4	0.5	-0.4
Information and communication	J	0.4	2.6	2.9	0.2	0.6	1.8
Publishing activities	J58	16.1	3.4	-12.5	7.7	-3.9	-0.2
Motion picture, video, television programme production; programming and broadcasting activities	J59	-34.3	38.0	-20.8	16.3	8.4	-7.2
Programming and broadcasting activities	J60	-1.3	1.3	1.0	-1.0	-42.8	81.0
Telecommunications	J61	2.5	-1.5	4.7	5.2	-1.3	-0.4
Computer programming, consultancy and related activities	J62	-1.9	6.7	2.9	-3.1	4.2	1.0
Information service activities	J63	10.7	-11.4	4.6	2.8	-10.2	12.3
Real estate activities	L	10.6	-6.2	-3.3	2.7	-1.7	3.1
Professional, scientific and technical activities (specific grouping under Regulation (EU) 2019/2152)	M_STS	1.8	2.8	-4.5	0.1	-0.8	-0.1
Legal and accounting activities	M69	6.5	-0.5	1.1	2.2	-5.4	-3.5
Management consultancy activities	M702	11.8	-1.8	8.4	-2.3	-8.6	2.5
Architectural and engineering activities; technical testing and analysis	M71	-5.4	10.5	-16.0	0.3	5.1	2.0
Advertising and market research	M73	-3.2	6.9	-11.9	-1.8	-3.1	8.7
Other professional, scientific and technical activities	M74	0.3	0.5	-4.1	1.3	7.6	-5.8
Administrative and support service activities	N	3.0	-7.9	7.0	-5.0	-3.0	0.8
Rental and leasing activities	N77	3.7	-15.3	13.9	-22.6	-2.0	10.8
Employment activities	N78	1.7	-7.1	7.7	-0.6	0.9	-17.5
Travel agency, tour operator reservation service and related activities	N79	-8.2	-3.9	9.3	1.3	0.7	3.7
Security and investigation activities	N80	3.5	-0.8	1.3	11.9	-10.5	1.0
Services to buildings and landscape activities	N81	0.2	-8.3	12.9	-1.6	3.6	-0.8
Office administrative, office support and other business support activities	N82	5.1	-6.5	3.2	-3.4	-1.7	-0.2

¹ Seasonally adjusted data.

* Preliminary data.

Table 2

Changes of production indices in services¹
(Compared to the same month of the previous year)

(Per cent)

Economic activities	NACE.BG - 2008	2023		2024			
		XI	XII	I	II	III	IV*
Services of the business economy (except trade and financial and insurance activities)	HTNXK	-1.5	0.7	4.2	3.6	3.2	6.0
Transportation and storage	H	-4.5	-1.6	1.6	2.5	2.3	12.5
Land transport and transport via pipelines	H49	-4.4	0.3	-1.0	1.8	1.6	5.8
Water transport	H50	-2.7	2.9	1.3	29.5	27.2	31.7
Air transport	H51	-27.6	-18.4	-14.1	-4.9	-17.7	0.8
Warehousing and support activities for transportation	H52	-6.4	-6.0	2.6	0.1	4.8	22.8
Postal and courier activities	H53	6.5	5.5	17.3	14.9	2.2	25.2
Accommodation and food service activities	I	1.5	8.3	8.4	9.3	9.4	14.3
Accommodation	I55	-3.0	12.0	20.2	15.1	16.9	24.5
Food and beverage service activities	I56	5.9	5.0	-2.3	3.1	2.3	4.7
Information and communication	J	-5.1	1.1	6.1	6.2	8.2	11.4
Publishing activities	J58	11.9	13.1	-7.1	9.7	1.7	-17.5
Motion picture, video, television programme production; programming and broadcasting activities	J59	-40.1	-2.2	-4.6	2.3	7.5	-8.5
Programming and broadcasting activities	J60	-4.1	0.6	0.6	-4.9	-46.0	10.4
Telecommunications	J61	-2.7	-1.0	8.3	12.7	15.0	13.5
Computer programming, consultancy and related activities	J62	-10.7	3.3	4.3	4.1	8.6	13.5
Information service activities	J63	28.1	-9.0	15.7	0.0	-4.6	2.2
Real estate activities	L	0.6	-0.2	-3.2	1.7	-5.6	1.6
Professional, scientific and technical activities (specific grouping under Regulation (EU) 2019/2152)	M_STS	2.4	0.9	1.3	0.0	-1.4	-5.5
Legal and accounting activities	M69	1.8	-1.2	0.1	4.8	7.2	-0.5
Management consultancy activities	M702	5.4	-1.7	34.9	19.7	-15.6	-6.0
Architectural and engineering activities; technical testing and analysis	M71	-3.6	7.6	-7.9	-14.9	4.6	-22.0
Advertising and market research	M73	12.4	17.6	6.6	2.7	-1.9	4.2
Other professional, scientific and technical activities	M74	-0.8	-10.8	-14.3	-7.6	-1.8	1.8
Administrative and support service activities	N	8.5	-1.3	8.8	-0.5	-4.5	-10.0
Rental and leasing activities	N77	69.2	58.9	29.1	-13.1	-11.8	-27.3
Employment activities	N78	2.4	-10.4	1.7	-1.0	-2.4	-24.4
Travel agency, tour operator reservation service and related activities	N79	-22.4	-29.0	19.0	17.6	13.2	21.0
Security and investigation activities	N80	0.5	-1.0	1.1	13.1	3.4	6.3
Services to buildings and landscape activities	N81	-5.7	-12.4	4.0	1.1	3.0	6.8
Office administrative, office support and other business support activities	N82	-9.2	-22.3	3.6	-2.6	-8.8	-3.8

¹ Calendar-adjusted data.

* Preliminary data.

SERVICES PRODUCTION INDICES IN APRIL 2024

Table 3

Production indices in services - seasonally adjusted (2015=100)

NACE.BG - 2008	2023									2024			
	IV	V	VI	VII	VIII	IX	X	XI	XII	I	II	III	IV*
HTNXK	159.8	160.3	161.2	156.1	160.0	160.1	160.6	161.6	162.5	164.3	164.1	164.6	167.4
H	136.5	138.5	136.2	133.8	136.0	137.1	141.3	136.2	138.7	139.8	140.0	143.3	147.7
H49	130.8	130.9	128.6	128.6	129.7	131.0	132.5	127.0	131.6	129.5	132.7	135.0	136.9
H50	100.7	104.5	114.4	104.8	111.7	108.8	116.0	113.9	124.2	113.2	121.5	124.7	127.0
H51	178.6	145.8	152.7	131.8	135.5	139.6	165.6	125.9	124.2	132.6	138.8	145.2	172.2
H52	136.8	145.2	140.1	135.9	139.0	140.1	147.2	145.5	144.9	149.4	143.5	150.4	154.0
H53	174.4	180.6	183.9	177.8	185.1	183.5	188.9	187.4	184.5	198.3	195.3	190.0	210.4
I	143.0	140.1	146.6	138.5	135.9	145.9	147.8	148.5	152.0	152.4	154.7	155.8	157.2
I55	140.3	135.9	146.3	131.6	128.0	143.4	144.2	145.3	152.1	151.0	151.3	153.3	154.9
I56	144.5	144.9	147.0	145.7	144.9	148.0	152.8	152.6	153.3	147.0	153.4	154.2	153.6
J	196.1	195.5	211.1	193.3	199.0	203.4	199.7	200.5	205.7	211.7	212.2	213.5	217.3
J58	132.3	113.7	115.3	117.9	109.8	114.2	100.5	116.6	120.6	105.5	113.7	109.3	109.0
J59	83.2	81.6	77.1	70.6	86.6	63.8	90.6	59.5	82.1	65.0	75.6	82.0	76.0
J60	86.4	86.9	87.6	78.9	87.0	85.8	83.7	82.6	83.7	84.5	83.7	47.9	86.7
J61	163.7	171.0	182.0	166.0	174.8	170.8	169.5	173.8	171.2	179.2	188.6	186.0	185.3
J62	228.2	224.2	251.8	224.1	230.3	244.9	235.2	230.7	246.1	253.2	245.2	255.5	257.9
J63	253.6	247.1	225.8	246.4	236.7	226.2	242.7	268.7	237.9	248.8	255.8	229.8	257.9
L	135.0	134.9	128.9	126.6	128.7	128.5	126.8	140.2	131.5	127.1	130.5	128.3	132.3
M_STS	147.1	156.1	139.2	148.0	155.6	144.0	142.3	144.9	149.0	142.3	142.4	141.3	141.2
M69	138.6	136.9	121.8	140.1	136.0	144.6	139.4	148.5	147.8	149.3	152.6	144.4	139.4
M702	160.0	163.7	159.4	165.8	134.4	139.3	139.6	156.0	153.2	166.0	162.1	148.1	151.8
M71	142.2	148.9	130.5	134.3	128.4	129.6	124.1	117.4	129.7	109.0	109.3	114.9	117.2
M73	137.6	135.6	133.7	140.5	135.5	147.3	152.3	147.3	157.5	138.8	136.2	132.0	143.5
M74	158.5	195.3	156.0	164.0	244.3	162.7	162.8	163.3	164.1	157.4	159.5	171.6	161.8
N	183.9	173.3	171.1	172.1	178.0	172.2	178.0	183.4	168.8	180.7	171.7	166.5	167.8
N77	342.5	288.1	234.4	260.2	282.4	257.6	299.5	310.6	263.1	299.5	231.7	227.1	251.5
N78	133.4	125.8	128.1	120.2	118.8	123.4	123.3	125.3	116.4	125.4	124.6	125.7	103.7
N79	102.6	103.6	132.6	124.6	124.7	142.1	113.1	103.8	99.8	109.1	110.5	111.2	115.3
N80	113.5	113.8	119.5	118.9	125.9	111.8	114.3	118.3	117.3	118.8	133.0	119.1	120.3
N81	175.4	182.3	182.2	176.1	171.1	173.4	177.6	177.9	163.2	184.3	181.4	187.9	186.5
N82	225.2	219.8	230.8	227.1	230.0	232.7	231.9	243.7	227.9	235.1	227.1	223.2	222.8

* Preliminary data.

SERVICES PRODUCTION INDICES IN APRIL 2024

Table 4

Production indices in services - calendar-adjusted (2015=100)

NACE.BG - 2008	2023									2024			
	IV	V	VI	VII	VIII	IX	X	XI	XII	I	II	III	IV*
HTNXK	151.9	155.0	169.5	165.8	164.8	162.1	158.9	160.8	185.8	144.7	150.9	166.1	161.0
H	132.0	138.4	142.4	145.5	135.0	138.0	147.6	139.7	137.3	121.7	130.8	148.1	148.4
H49	128.5	130.7	131.7	139.4	121.7	129.7	141.4	133.1	130.7	110.9	126.3	145.0	135.9
H50	94.6	105.5	122.5	123.5	117.6	114.5	127.9	112.6	138.0	90.0	98.4	120.3	124.5
H51	133.4	138.1	193.4	227.6	237.3	194.7	147.1	73.6	80.2	75.1	78.7	93.9	134.5
H52	132.3	146.9	149.7	145.4	144.1	142.6	152.2	146.0	140.6	133.4	133.1	150.0	162.5
H53	167.4	176.8	187.3	168.3	172.5	172.6	187.3	205.9	207.9	194.6	190.0	197.8	209.6
I	118.3	130.6	161.7	206.4	232.5	164.0	123.6	110.4	131.5	121.6	128.8	135.6	135.2
I55	106.0	115.1	163.2	223.3	262.6	168.2	107.4	96.4	120.3	118.6	128.5	130.6	132.0
I56	132.7	148.8	159.9	186.5	197.2	159.2	142.5	126.8	144.6	125.1	129.1	141.4	139.0
J	186.2	186.6	219.6	187.6	186.0	200.8	201.7	206.7	259.6	191.8	194.5	223.7	207.3
J58	117.8	101.2	123.0	139.6	106.8	143.8	106.8	121.9	140.5	90.1	91.8	92.3	97.2
J59	76.3	72.3	76.6	62.7	72.2	53.4	103.9	68.2	154.8	46.1	61.4	78.8	69.8
J60	80.8	90.4	99.5	63.5	63.8	84.3	99.6	114.4	82.6	57.8	69.7	64.1	89.2
J61	156.8	168.5	185.1	168.6	178.4	175.5	168.8	173.7	190.2	173.8	175.3	183.7	177.9
J62	215.4	211.1	265.8	212.7	206.9	236.5	238.7	233.5	329.4	223.9	223.4	277.3	244.4
J63	248.3	233.0	226.8	232.1	213.2	215.8	235.1	317.2	290.9	223.5	244.2	238.8	253.7
L	125.0	123.9	130.2	129.2	130.7	137.7	119.3	143.7	156.5	117.9	124.9	125.1	127.0
M_STS	146.0	151.8	149.2	146.4	140.2	140.1	139.9	142.5	200.3	122.5	133.6	144.0	138.0
M69	148.7	136.1	131.5	142.5	120.0	136.0	133.0	143.3	186.0	129.8	140.8	151.5	147.9
M702	156.6	154.5	182.7	158.6	120.1	152.8	136.2	143.8	197.8	158.6	166.1	140.7	147.1
M71	139.7	141.5	137.7	137.9	122.5	117.8	115.0	112.7	210.6	80.0	95.3	117.7	108.9
M73	137.3	136.5	137.6	134.3	119.9	142.0	164.8	167.5	193.8	108.0	119.7	130.0	143.0
M74	148.1	191.2	162.8	159.8	216.9	159.5	162.3	158.1	210.5	146.3	155.1	181.5	150.9
N	180.9	171.5	180.0	179.0	182.2	175.9	175.0	191.7	176.0	162.5	160.6	161.2	162.8
N77	338.4	301.3	249.3	269.8	288.0	265.4	288.5	338.0	299.6	249.4	197.7	205.9	246.0
N78	142.9	123.0	126.5	120.3	117.8	121.5	125.4	125.5	132.5	110.5	120.3	125.5	108.0
N79	75.7	87.7	162.4	185.2	200.6	192.4	113.0	66.1	76.1	70.6	77.6	86.2	91.6
N80	111.6	110.7	119.6	121.4	128.2	114.4	118.1	117.4	126.4	109.4	130.3	116.3	118.6
N81	171.8	190.9	194.3	191.2	177.8	173.6	180.8	178.0	171.8	156.8	164.6	183.0	183.5
N82	221.5	210.3	246.3	222.3	215.1	224.4	219.2	274.0	214.8	236.4	226.1	229.0	213.0

* Preliminary data.