

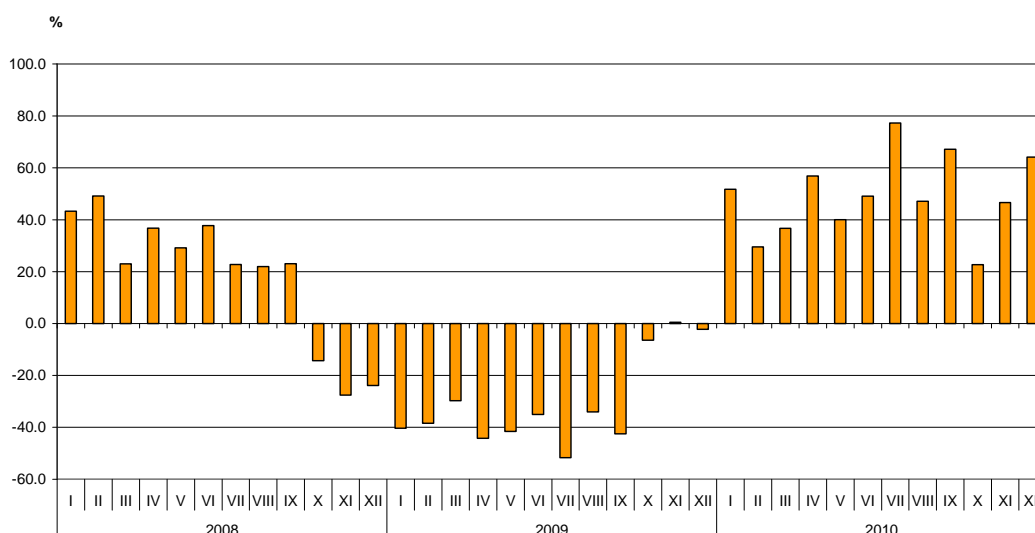


BULGARIAN TRADE WITH THIRD COUNTRIES IN 2010 (PRELIMINARY DATA)

In 2010 the Bulgarian exports to third countries increased by 48.5% compared to the previous year and amounted to 11.9 billion leva (Table 1.1 and 1.2). The main trade partners of Bulgaria were Turkey, Serbia, Russia, the former Yugoslav Republic of Macedonia, USA, Ukraine, China and Singapore that formed 56.4% of the total exports to non EU countries (Table 2). The exported goods to Ukraine increased by 98.1% and those to China by 97%. The exports to Turkey and Russia reported growths by 56.5% and by 51.1% respectively, to the former Yugoslav Republic of Macedonia by 38.5% and to USA by 16.7%. The exports to Peru, Republic of Korea and India increased significantly. Falls were reported on the exports to United Arab Emirates, Bosnia and Herzegovina, Singapore, Canada, Indonesia, Albania and Egypt.

In December 2010 the exports to third countries increased by 64.1% compared to the corresponding month of the previous year and were over 1.2 billion leva.

Figure 1. Nominal growth of exports to non EU countries for the period
2008 - 2010
(Compared to the same month of the previous year)

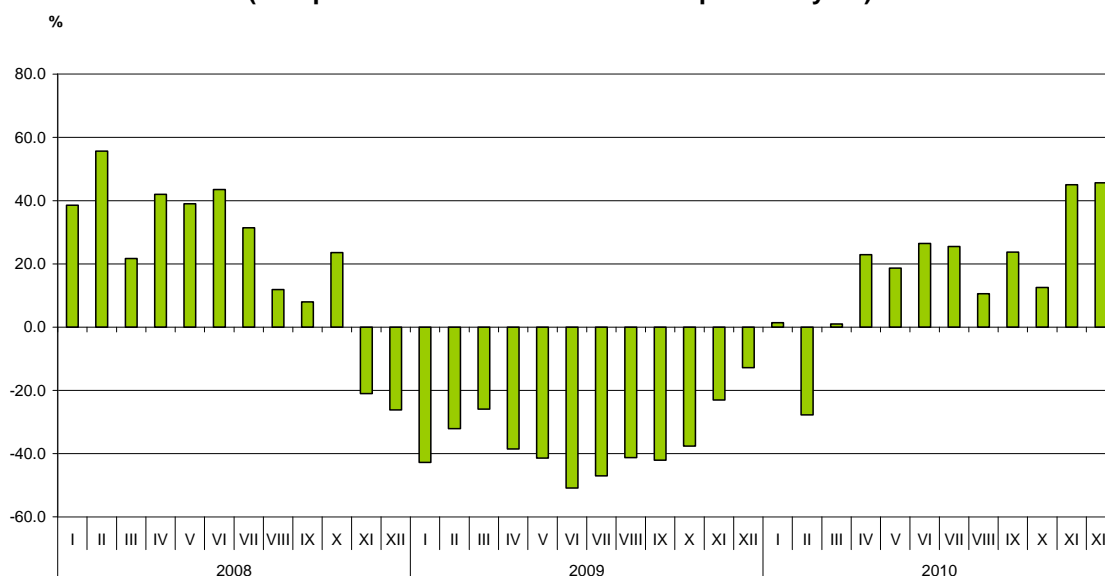




Bulgarian **imports from third countries** in 2010 increased by 17.1% compared to the previous year and **amounted to 15.5 billion leva (at CIF prices)** (Tables 1.1 and 1.2). The most significant growths were reported on the imports from Egypt, Albania and Israel (Table 2). The imports from Peru increased by 73.9% and from United Arab Emirates by 59.3%. The largest decreases were observed in the imports from Kazakhstan, South Africa and Norway.

In December 2010 the Bulgarian imports from third countries increased by 45.6% compared to the corresponding month of the previous year and **amounted to 1.6 billion leva (at CIF prices)**.

Figure 2. Nominal growth of imports from non EU countries for the period 2008 - 2010
(Compared to the same month of the previous year)



The foreign trade balance of Bulgaria (export FOB - import CIF) with third countries in 2010 was negative and amounted to 3.6 billion leva (Table 1.1).

In December 2010 the foreign trade balance of Bulgaria (export FOB - import CIF) with third countries was negative and amounted to 361.5 million leva.



The **exports** of Bulgaria to **third countries**, distributed according to the **Standard International Trade Classification**, increased in the most of the sections in 2010 compared to 2009 (Table 3). The largest growths were recorded in the sections “Crude materials, inedible (except fuel)”¹ “Mineral fuels, lubricants and related materials” “Miscellaneous manufactured articles”², and “Manufactured goods classified chiefly by material”³.

The largest growths in **imports** from **third countries** were reported in section “Mineral fuels, lubricants and related materials” and the most significant falls were in section “Food and live animals”.

Bulgarian trade with third countries and EU - total

In 2010 **the total value of the exported goods** was **30.4 billion levs** and compared to 2009 the exports **increased by 33%** (Table 1.1 and 1.2).

In December 2010 **the total exports amounted to 2.7 billion levs** and increased by 45% compared to the corresponding month of the previous year.

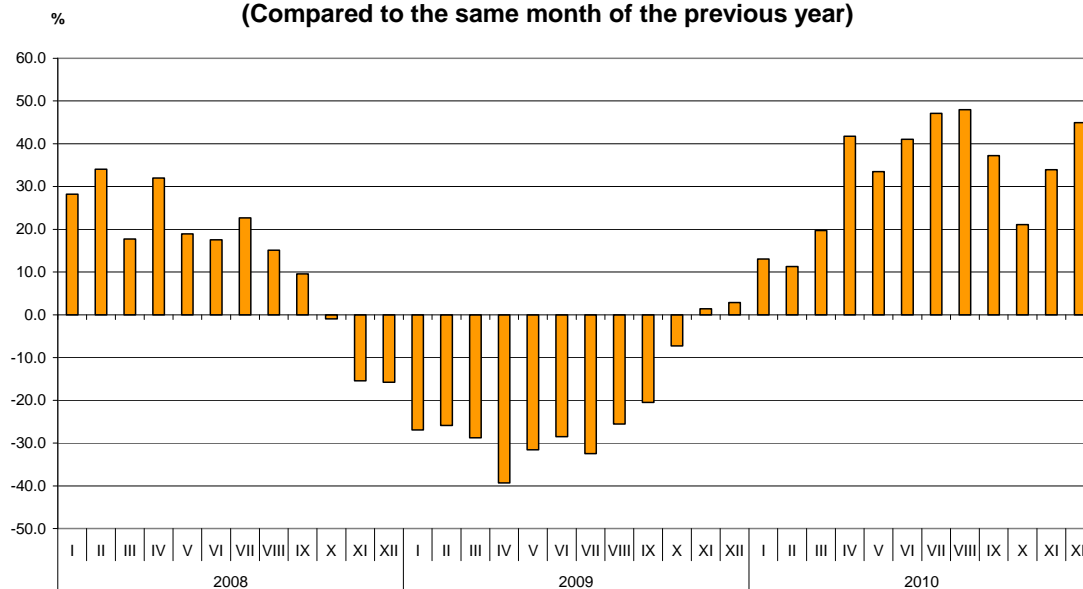
¹ The section includes the following divisions: raw hides, skins and furskins; oil-seeds and oleaginous fruits; crude rubber; cork and wood; pulp and waste paper; textile fibres and their wastes; crude fertilizers and crude minerals; metalliferous ores and metal scrap; crude animal and vegetable materials, n.e.s.

² The section includes the following divisions: prefabricated buildings; sanitary, plumbing, heating and lightning fixtures and fittings, n.e.s. ; furniture and parts thereof; bedding, mattresses, mattress supports, cushions and similar stuffed furnishings; travel goods, handbags and similar containers; articles of apparel and clothing accessories; footwear; professional, scientific and controlling instruments and apparatus, n.e.s.; . photographic apparatus, equipment and supplies and optical goods, n.e.s.; watches and clocks; miscellaneous manufactured articles, n.e.s.

³ The section includes the following divisions: leather, leather manufactures, n.e.s. and dressed furskins; rubber manufactures, n.e.s; cork and wood manufactures (excluding furniture); paper, paperboard and articles of paper pulp, of paper or of paperboard; textile yarn, fabrics, made-up articles, n.e.s., and related products; non-metallic mineral manufactures, n.e.s.; iron and steel; non-ferrous metals; manufactures of metals, n.e.s.



Figure 3. Nominal growth of exports for the period
2008 - 2010
(Compared to the same month of the previous year)



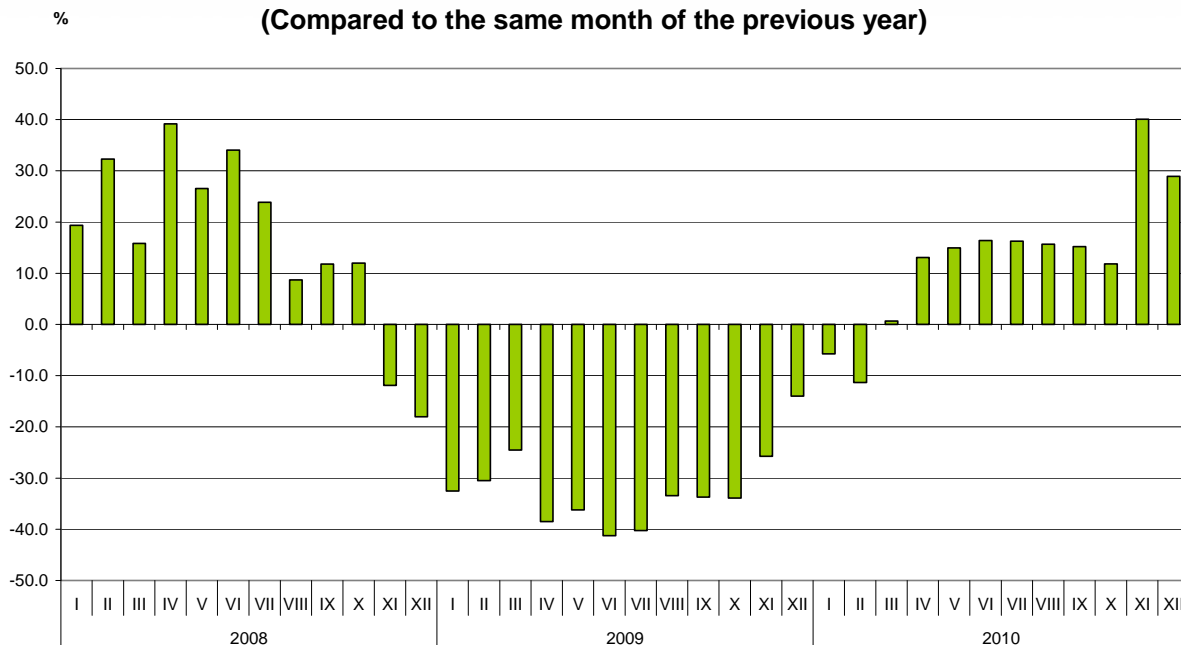
The total imported goods in 2010 were for 37.4 billion leva (at CIF prices) or by 13.3% more than in the previous year (Table 1.1 and 1.2).

In December 2010 the total imports (at CIF prices) increased by 29% compared to the corresponding period of the previous year and amounted to 3.6 billion leva.



Figure 4. Nominal growth of imports for the period
2008 - 2010

(Compared to the same month of the previous year)



The total foreign trade balance (exports FOB - import CIF) was negative in 2010 and amounted to 7 billion leva which was over 3.1 billion leva less than the balance in 2009 (Table 1.1 and 1.2). At FOB/FOB prices (after elimination of transport and insurance costs on imports) the negative balance in 2010 amounted to 4.7 billion leva.

In December 2010 the total foreign trade balance (exports FOB - import CIF) was negative and amounted to 864.3 million leva while at FOB/FOB prices was also negative and reached to 638.5 million leva.

ANNEX

Table 1.1

EXPORTS, IMPORTS AND TRADE BALANCE IN 2009 AND 2010¹ BY MONTHS

(Million Levs)

Months	Exports - FOB			Imports - CIF			Imports - FOB ²			Trade balance - FOB/CIF			Trade balance - FOB/FOB ²		
	Total	EU	Non EU	Total	EU	Non EU	Total	EU	Non EU	Total	EU	Non EU	Total	EU	Non EU
I.2009	1592.0	1113.0	479.0	2402.5	1423.7	978.8	2246.0	1348.8	897.2	-810.5	-310.7	-499.8	-654.0	-235.8	-418.2
II.2009	1761.9	1221.6	540.3	2591.2	1530.8	1060.4	2435.9	1450.3	985.6	-829.3	-309.2	-520.1	-674.0	-228.7	-445.3
III.2009	1844.9	1172.8	672.1	2942.5	1769.0	1173.5	2777.2	1678.6	1098.6	-1097.6	-596.2	-501.4	-932.3	-505.8	-426.5
I - III.2009	5198.8	3507.4	1691.4	7936.2	4723.5	3212.7	7459.1	4477.7	2981.4	-2737.4	-1216.1	-1521.3	-2260.3	-970.3	-1290.0
IV.2009	1628.8	1000.5	628.3	2709.2	1570.4	1138.8	2551.2	1490.9	1060.3	-1080.4	-569.9	-510.5	-922.4	-490.4	-432.0
V.2009	1771.5	1126.6	644.9	2797.8	1645.2	1152.6	2630.8	1560.4	1070.4	-1026.3	-518.6	-507.7	-859.3	-433.8	-425.5
VI.2009	1955.0	1205.9	749.1	2799.7	1735.3	1064.4	2632.6	1644.9	987.7	-844.7	-529.4	-315.3	-677.6	-439.0	-238.6
IV - VI.2009	5355.3	3333.0	2022.3	8306.7	4950.9	3355.8	7814.6	4696.2	3118.4	-2951.4	-1617.9	-1333.5	-2459.3	-1363.2	-1096.1
I - VI.2009	10554.1	6840.4	3713.7	16242.9	9674.4	6568.5	15273.7	9173.9	6099.8	-5688.8	-2834.0	-2854.8	-4719.6	-2333.5	-2386.1
VII.2009	2012.9	1425.3	587.6	2803.8	1664.1	1139.7	2640.0	1577.7	1062.3	-790.9	-238.8	-552.1	-627.1	-152.4	-474.7
VIII.2009	1920.4	1195.0	725.4	2582.8	1463.9	1118.9	2423.3	1388.6	1034.7	-662.4	-268.9	-393.5	-502.9	-193.6	-309.3
IX.2009	2043.4	1372.1	671.3	2747.3	1724.4	1022.9	2587.2	1637.9	949.3	-703.9	-352.3	-351.6	-543.8	-265.8	-278.0
VII-IX.2009	5976.7	3992.4	1984.3	8133.9	4852.4	3281.5	7650.5	4604.2	3046.3	-2157.2	-860.0	-1297.2	-1673.8	-611.8	-1062.0
I - IX.2009	16530.8	10832.8	5698.0	24376.8	14526.8	9850.0	22924.2	13778.1	9146.1	-7846.0	-3694.0	-4152.0	-6393.4	-2945.3	-3448.1
X.2009	2344.5	1490.4	854.1	3062.9	1841.4	1221.5	2879.9	1746.5	1133.4	-718.4	-351.0	-367.4	-535.4	-256.1	-279.3
XI.2009	2125.4	1376.2	749.2	2781.1	1702.4	1078.7	2616.7	1614.9	1001.8	-655.7	-326.2	-329.5	-491.3	-238.7	-252.6
XII.2009	1881.1	1155.4	725.7	2785.2	1719.1	1066.1	2623.8	1633.7	990.1	-904.1	-563.7	-340.4	-742.7	-478.3	-264.4
X-XII.2009	6351.0	4022.0	2329.0	8629.2	5262.9	3366.3	8120.4	4995.1	3125.3	-2278.2	-1240.9	-1037.3	-1769.4	-973.1	-796.3
I-XII.2009	22881.8	14854.8	8027.0	33006.0	19789.7	13216.3	31044.6	18773.2	12271.4	-10124.2	-4934.9	-5189.3	-8162.8	-3918.4	-4244.4
I.2010	1800.0	1073.2	726.8	2264.0	1271.6	992.4	2130.0	1205.7	924.3	-464.0	-198.4	-265.6	-330.0	-132.5	-197.5
II.2010	1960.8	1260.7	700.1	2297.1	1531.6	765.5	2154.6	1441.9	712.7	-336.3	-270.9	-65.4	-193.8	-181.2	-12.6
III.2010	2208.9	1289.9	919.0	2962.0	1777.4	1184.6	2791.3	1691.2	1100.1	-753.1	-487.5	-265.6	-582.4	-401.3	-181.1
I - III.2010	5969.7	3623.8	2345.9	7523.1	4580.6	2942.5	7075.9	4338.8	2737.1	-1553.4	-956.8	-596.6	-1106.2	-715.0	-391.2
IV.2010	2309.0	1323.4	985.6	3063.4	1663.4	1400.0	2884.6	1582.2	1302.4	-754.4	-340.0	-414.4	-575.6	-258.8	-316.8
V.2010	2364.8	1461.5	903.3	3215.7	1847.8	1367.9	3018.4	1750.7	1267.7	-850.9	-386.3	-464.6	-653.6	-289.2	-364.4
VI.2010	2757.5	1640.9	1116.6	3259.0	1912.9	1346.1	3060.3	1813.9	1246.4	-501.5	-272.0	-229.5	-302.8	-173.0	-129.8
IV - VI.2010	7431.3	4425.8	3005.5	9538.1	5424.1	4114.0	8963.3	5146.8	3816.5	-2106.8	-998.3	-1108.5	-1532.0	-721.0	-811.0
I - VI.2010	13401.0	8049.6	5351.4	17061.2	10004.7	7056.5	16039.2	9485.6	6553.6	-3660.2	-1955.1	-1705.1	-2638.2	-1436.0	-1202.2
VII.2010	2961.2	1919.4	1041.8	3260.3	1830.4	1429.9	3051.7	1733.9	1317.8	-299.1	89.0	-388.1	-90.5	185.5	-276.0
VIII.2010	2842.0	1774.5	1067.5	2987.3	1750.3	1237.0	2809.2	1660.5	1148.7	-145.3	24.2	-169.5	32.8	114.0	-81.2
IX.2010	2803.9	1682.0	1121.9	3164.3	1899.0	1265.3	2978.1	1804.5	1173.6	-360.4	-217.0	-143.4	-174.2	-122.5	-51.7
VII-IX.2010	8607.1	5375.9	3231.2	9411.9	5479.7	3932.2	8839.0	5198.9	3640.1	-804.8	-103.8	-701.0	-231.9	177.0	-408.9
I - IX.2010	22008.1	13425.5	8582.6	26473.1	15484.4	10988.7	24878.2	14684.5	10193.7	-4465.0	-2058.9	-2406.1	-2870.1	-1259.0	-1611.1



X.2010	2839.3	1791.5	1047.8	3425.4	2050.7	1374.7	3214.1	1939.5	1274.6	-586.1	-259.2	-326.9	-374.8	-148.0	-226.8
XI.2010	2846.7	1748.0	1098.7	3895.6	2331.2	1564.4	3659.3	2212.1	1447.2	-1048.9	-583.2	-465.7	-812.6	-464.1	-348.5
XII.2010	2727.3	1536.3	1191.0	3591.6	2039.1	1552.5	3365.8	1937.1	1428.7	-864.3	-502.8	-361.5	-638.5	-400.8	-237.7
X-XII.2010	8413.3	5075.8	3337.5	10912.6	6421.0	4491.6	10239.2	6088.7	4150.5	-2499.3	-1345.2	-1154.1	-1825.9	-1012.9	-813.0
I-XII.2010	30421.4	18501.3	11920.1	37385.7	21905.4	15480.3	35117.4	20773.2	14344.2	-6964.3	-3404.1	-3560.2	-4696.0	-2271.9	-2424.1

¹ Data are preliminary as of 09.02.2011.

² By data of BNB for the transport costs.

Table 1.2

GROWTH OF EXPORTS AND IMPORTS FOR THE PERIOD JANUARY - DECEMBER 2010¹ COMPARED TO THE SAME MONTH OF THE PREVIOUS YEAR

(Per cent)

Months	Exports - FOB			Imports - CIF			Imports - FOB		
	Total	EU	Non EU	Total	EU	Non EU	Total	EU	Non EU
I	13.1	-3.6	51.7	-5.8	-10.7	1.4	-5.2	-10.6	3.0
II	11.3	3.2	29.6	-11.3	0.1	-27.8	-11.5	-0.6	-27.7
III	19.7	10.0	36.7	0.7	0.5	0.9	0.5	0.8	0.1
I - III	14.8	3.3	38.7	-5.2	-3.0	-8.4	-5.1	-3.1	-8.2
IV	41.8	32.3	56.9	13.1	5.9	22.9	13.1	6.1	22.8
V	33.5	29.7	40.1	14.9	12.3	18.7	14.7	12.2	18.4
VI	41.0	36.1	49.1	16.4	10.2	26.5	16.2	10.3	26.2
IV - VI	38.8	32.8	48.6	14.8	9.6	22.6	14.7	9.6	22.4
I - VI	27.0	17.7	44.1	5.0	3.4	7.4	5.0	3.4	7.4
VII	47.1	34.7	77.3	16.3	10.0	25.5	15.6	9.9	24.1
VIII	48.0	48.5	47.2	15.7	19.6	10.6	15.9	19.6	11.0
IX	37.2	22.6	67.1	15.2	10.1	23.7	15.1	10.2	23.6
VII - IX	44.0	34.7	62.8	15.7	12.9	19.8	15.5	12.9	19.5
I - IX	33.1	23.9	50.6	8.6	6.6	11.6	8.5	6.6	11.5
X	21.1	20.2	22.7	11.8	11.4	12.5	11.6	11.1	12.5
XI	33.9	27.0	46.6	40.1	36.9	45.0	39.8	37.0	44.5
XII	45.0	33.0	64.1	29.0	18.6	45.6	28.3	18.6	44.3
X-XII	32.5	26.2	43.3	26.5	22.0	33.4	26.1	21.9	32.8
I-XII	33.0	24.5	48.5	13.3	10.7	17.1	13.1	10.7	16.9

EXPORTS, IMPORTS AND TRADE BALANCE WITH MAIN NON EU PARTNER COUNTRIES¹
IN 2009 AND 2010²

Countries	Exports - FOB			Imports - CIF			Trade balance - FOB/CIF	
	2009	2010	Growth - %	2009	2010	Growth - %	2009	2010
	Million Levs			Million Levs			Million Levs	
Third countries -total	8027.0	11920.1	48.5	13216.3	15480.3	17.1	-5189.3	-3560.2
Albania	124.2	115.7	-6.8	9.8	23.6	140.8	114.4	92.
Bosnia and Herzegovina	78.8	65.7	-16.6	8.5	12.5	47.1	70.3	53.2
Brazil	25.0	49.2	96.8	273.6	149.9	-45.2	-248.6	-100.7
Canada	61.9	54.2	-12.4	98.3	58.8	-40.2	-36.4	-4.6
China	187.7	369.8	97.0	891.7	965.8	8.3	-704.0	-596.0
Croatia	135.0	161.1	19.3	70.7	69.0	-2.4	64.3	92.1
Egypt	204.5	202.5	-1.0	44.0	153.8	249.5	160.5	48.7
Georgia	185.7	281.8	51.8	370.9	306.0	-17.5	-185.2	-24.2
India	35.8	87.0	143.0	97.7	95.4	-2.4	-61.9	-8.4
Indonesia	31.7	28.2	-11.0	32.3	34.4	6.5	-0.6	-6.2
Iran	49.7	84.1	69.2	14.0	10.4	-25.7	35.7	73.7
Israel	76.2	146.1	91.7	96.6	184.0	90.5	-20.4	-37.9
Japan	28.1	32.3	14.9	148.5	136.3	-8.2	-120.4	-104.0
Kazakhstan	33.6	40.6	20.8	141.8	14.1	-90.1	-108.2	26.5
Republic of Korea	42.0	184.1	338.3	96.4	146.1	51.6	-54.4	38.0
Norway	44.2	45.9	3.8	41.4	16.4	-60.4	2.8	29.5
Peru	1.4	8.7	521.4	250.9	436.2	73.9	-249.5	-427.5
Russian Federation	574.1	867.4	51.1	4424.0	6050.4	36.8	-3849.9	-5183.0
Serbia	727.1	1073.2	47.6	281.6	392.5	39.4	445.5	680.7
Singapore	430.0	366.1	-14.9	18.2	16.0	-12.1	411.8	350.1
South Africa	11.9	15.5	30.3	72.9	21.6	-70.4	-61.0	-6.1
Switzerland	163.9	195.9	19.5	304.3	341.0	12.1	-140.4	-145.1
Syria	126.8	155.2	22.4	80.6	58.6	-27.3	46.2	96.6
Taiwan	22.8	45.2	98.2	84.9	113.8	34.0	-62.1	-68.6
The former Yugoslav Rep. of Macedonia	467.8	647.8	38.5	345.7	496.2	43.5	122.1	151.6
Turkey	1655.6	2591.8	56.5	1798.3	2028.9	12.8	-142.7	562.9
Ukraine	196.0	388.2	98.1	1583.5	1568.0	-1.0	-1387.5	-1179.8
United Arab Emirates	87.1	64.4	-26.1	27.5	43.8	59.3	59.6	20.6
USA	357.7	417.4	16.7	280.4	261.2	-6.8	77.3	156.2
Viet Nam	20.3	40.5	99.5	71.4	55.4	-22.4	-51.1	-14.9

¹ Partner country:

- In case of exports (or dispatches) is the country (or Member State) of final destination of the goods
- In case of imports (or arrivals) is the country (or Member State) of consignment of the goods.

² Data are preliminary as of 09.02.2011.



Table 3

EXPORTS, IMPORTS AND TRADE BALANCE WITH NON EU COUNTRIES BY SECTIONS OF SITC, rev.4
IN 2009 AND 2010¹

Sections by SITC	Exports - FOB			Imports - CIF			Trade balance - FOB/CIF	
	2009	2010	Growth - %	2009	2010	Growth - %	2009	2010
	Million Levs		Growth - %	Million Levs		Growth - %	Million Levs	
Third countries -total	8027.0	11920.1	48.5	13216.3	15480.3	17.1	-5189.3	-3560.2
Food and live animals	524.1	784.4	49.7	633.0	547.2	-13.6	-108.9	237.2
Beverages and tobacco	315.7	403.1	27.7	130.5	146.2	12.0	185.2	256.9
Crude materials, inedible (except fuel)	689.7	1093.0	58.5	1695.0	2046.3	20.7	-1005.3	-953.3
Mineral fuel, lubricants and related materials	1981.0	3106.1	56.8	5674.8	7110.8	25.3	-3693.8	-4004.7
Animals and vegetable oils, fats and waxes	44.3	50.5	14.0	44.8	45.0	0.4	-0.5	5.5
Chemical and related products n.e.c.	1048.2	1440.5	37.4	747.3	867.2	16.0	300.9	573.3
Manufactured goods classified chiefly by material	1756.4	2664.2	51.7	1877.7	2180.2	16.1	-121.3	484.0
Machinery and transport equipment	1066.0	1460.1	37.0	1777.8	1859.4	4.6	-711.8	-399.3
Miscellaneous manufactured articles	581.9	899.4	54.6	623.3	641.2	2.9	-41.4	258.2
Commodities and transactions n.e.c.	19.7	18.8	-4.6	12.1	36.8	204.1	7.6	-18.0

¹ Data are preliminary as of 09.02.2011.