



INDUSTRIAL PRODUCTION INDICES IN MARCH 2013¹

In compliance with Regulation (EC) № 1165/98 and amendment Regulation (EC) № 1158/2005 since January 2013 the base year for Short-term business statistics has been changed. All short-term indicators presented in the form of index are calculated and published at 2010 as a base year. The time series has been recalculated according to the new base year and are posted on the website of NSI: <http://www.nsi.bg/otrasalen.php?otr=55>.

The preliminary data showed that the Industrial Production Index², seasonally adjusted³, decreased by 2.3% in March 2013 as compared to February 2013.

In March 2013 working day adjusted⁴ Industrial Production Index fall by 3.6% in comparison with the same month of 2012.

¹ March 2013 data are preliminary.

² Monthly Industrial Production and Industrial turnover indices measure changes in production and turnover values of industrial enterprises. This information can be used to assess the current economic development and for short-term forecasts. Indices do not measure the actual production level, it aims to measure the average change in value of production between two points of time. Indices are compiled on the basis of information collected through representative sampling survey on industrial enterprises. The sample covers enterprises with annual turnover more than 97% of total turnover in industry.

Industrial production indices are calculated at constant base year that is to say they are weighted with the structure of the value added at factor costs in the base year.

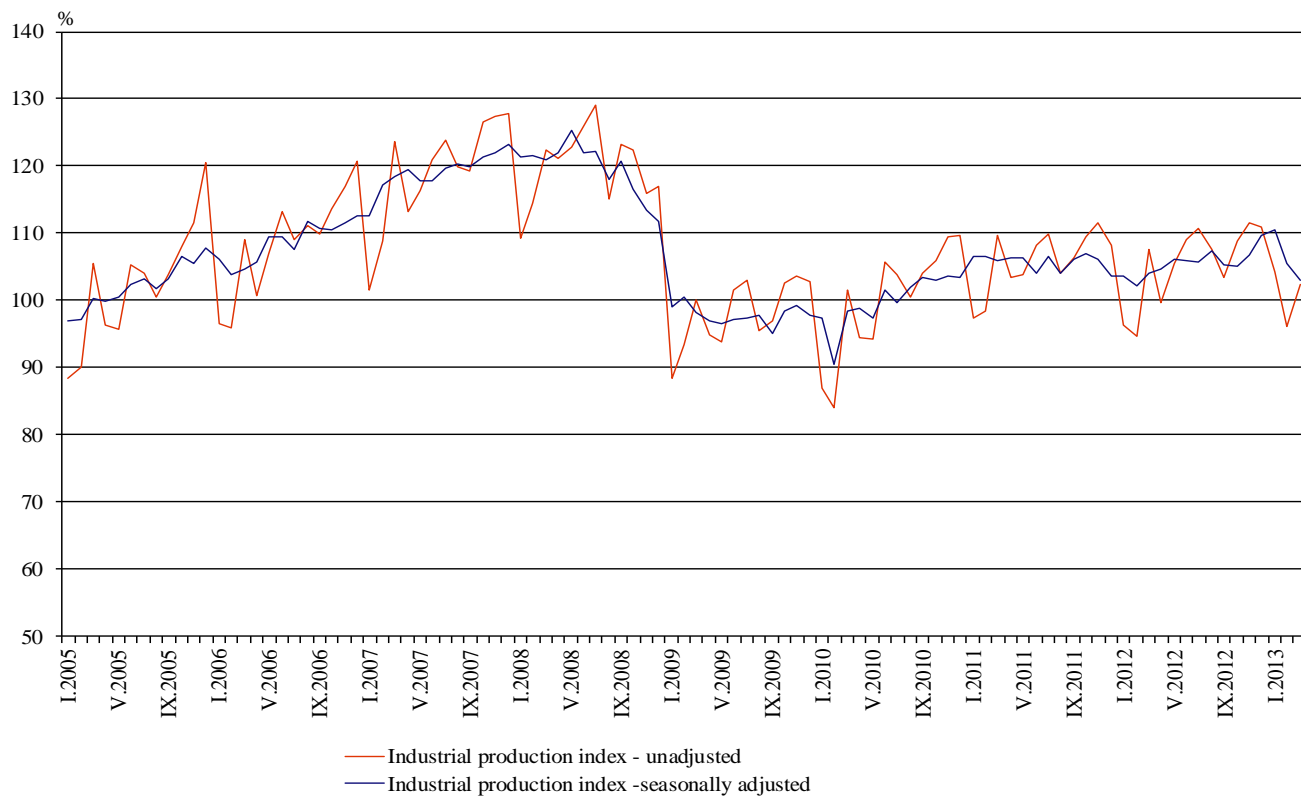
³ Seasonal adjustment is a statistical method, which eliminates the seasonal component of time series and it is particularly suitable for long-term comparisons and analysis of the data.

⁴ Working day adjustment is an adjustment for variations caused by calendar effects, different number of calendar and working days in the months, national holidays and outliers (for example the presence of more non-working days in May could contribute to the decline in the production in some activities).

The seasonally and working day adjusted data on Industrial production index by months, starting from January 2000 can be found on NSI web-site: (<http://www.nsi.bg/otrasalen.php?otr=46>).



Figure 1. Industrial Production Indices (2010=100)



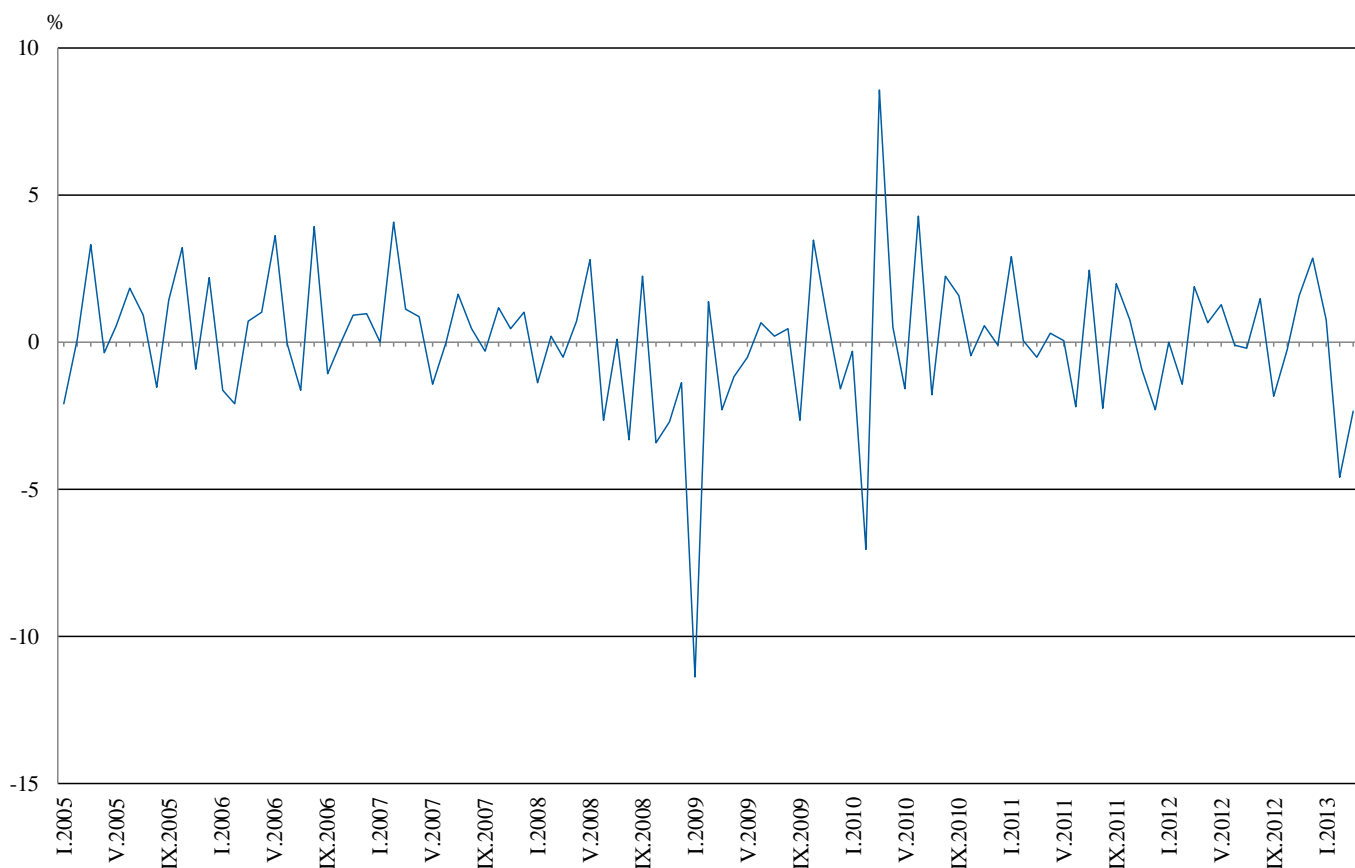
Monthly comparisons

In March 2013 as compared to February 2013, the seasonally adjusted Industrial Production Index decreased in the mining and quarrying industry by 12.0% and in the manufacturing by 3.7%, while in the electricity, gas, steam and air conditioning supply an increase by 4.3% was seen.

The most significant decreases of production in the manufacturing were seen in the manufacture of computer, electronic and optical products by 18.4%, in the manufacture of furniture by 9.5%, in the manufacture of rubber and plastic products by 9.3%, in the repair and installation of machinery and equipment by 7.9%, in the manufacture of wearing apparel by 4.8%. There was an increase in the manufacture of tobacco products by 8.9%, in the manufacture of textiles and in manufacture of machinery and equipment by 3.9%.



Figure 2. Percentage changes of Industrial Production Indices compared to the previous month (Seasonally adjusted)



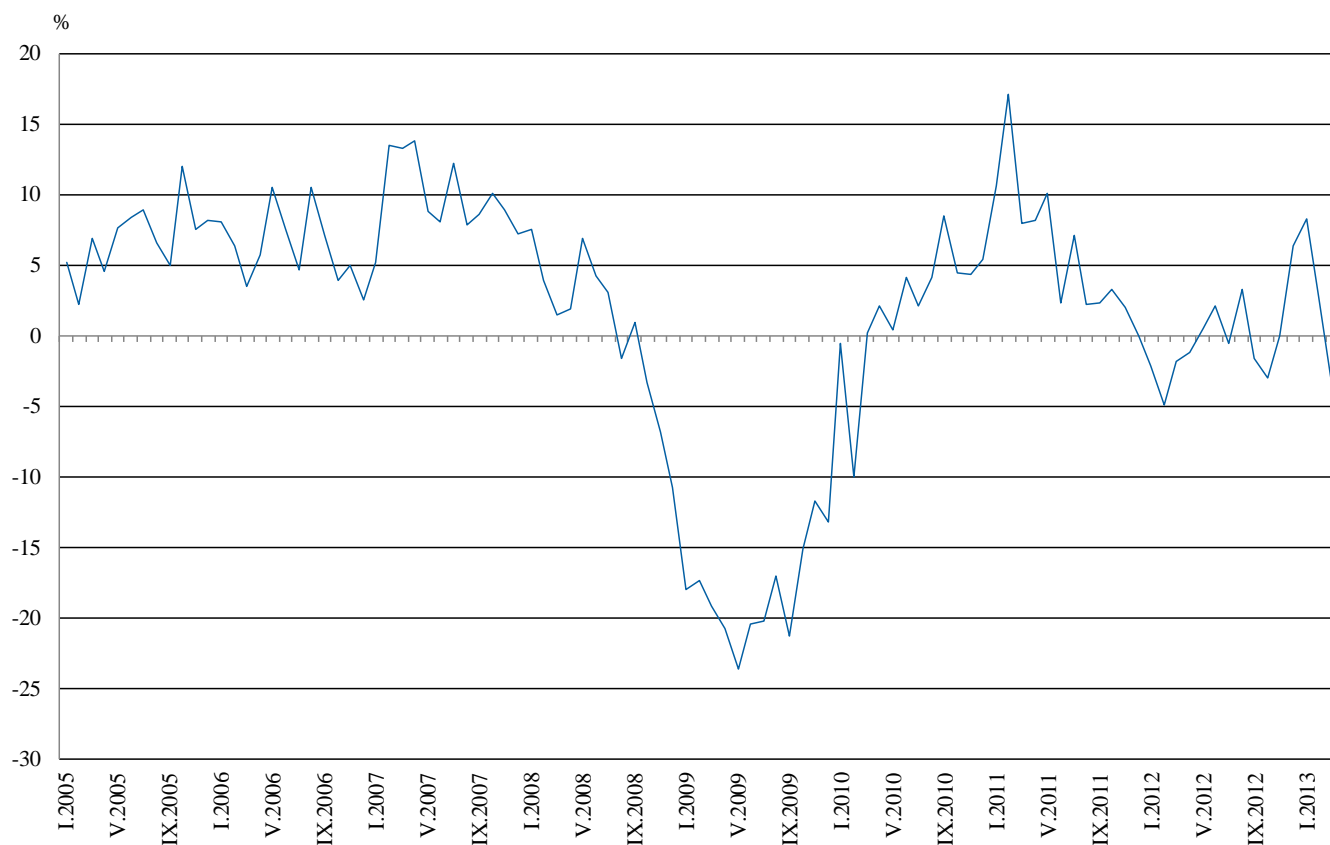
Annual comparisons

On annual basis in March 2013 Industrial Production Index, calculated from working day adjusted data decreased in the mining and quarrying industry by 22.7% and in the manufacturing by 3.5%, while in the electricity, gas, steam and air conditioning supply an increase by 4.9% was seen.

In the manufacturing, the more significant decreases compared to the same month of the previous year were seen in the manufacture of chemicals and chemical products by 17.2%, in the manufacture of leather and related products by 13.0%, in the manufacture of food products by 12.8%, in the repair and installation of machinery and equipment by 10.7%. Increases were registered in the manufacture of basic pharmaceutical products and pharmaceutical preparations by 14.6%, in the manufacture of textiles by 14.1%, in the manufacture of paper and paper products by 13.1%.



**Figure 3. Percentage changes of Industrial Production Indices compared to the same month of the previous year
(Working day adjusted)**



The final data on Industrial Production and Turnover Indices for February 2013 can be found on NSI web-site: (<http://www.nsi.bg/otrasalen.php?otr=46>).

Annex

Table 1

Percentage changes of Industrial Production Indices compared to the previous month¹

Economic Activities	NACE.BG - 2008 Code	2012			2013		
		X	XI	XII	I	II	III
Industry	B_TO_E36	-0.3	1.6	2.9	0.7	-4.6	-2.3
Mining and quarrying	B	-1.7	-25.7	33.6	-7.2	-5.5	-12.0
of which:							
Mining of coal and lignite	B05	-7.5	-23.1	39.1	-10.8	-12.2	-46.2
Mining of metal ores	B07	10.4	-27.7	43.9	-19.2	3.9	1.9
Other mining and quarrying	B08	-2.0	0.3	-16.7	-5.8	4.1	5.6
Manufacturing	C	0.5	1.2	-0.1	3.4	-1.7	-3.7
of which:							
Manufacture of food products	C10	1.7	-0.6	-0.7	1.7	-6.2	-1.3
Manufacture of beverages	C11	2.5	-4.7	-8.2	21.1	-9.9	-3.2
Manufacture of tobacco products	C12	-37.7	-6.2	47.7	3.7	6.5	8.9
Manufacture of textiles	C13	3.1	5.8	7.9	4.5	-10.9	3.9
Manufacture of wearing apparel	C14	-1.3	7.7	-0.8	4.6	-0.7	-4.8
Manufacture of leather and related products	C15	-9.1	9.7	-9.9	8.9	-5.2	-0.2
Manufacture of wood and of products of wood and cork, except furniture; manufacture of articles of straw and plaiting materials	C16	5.6	0.7	-10.1	14.5	-4.1	0.8
Manufacture of paper and paper products	C17	-2.7	3.4	3.2	-0.2	6.9	-1.5
Printing and reproduction of recorded media	C18	-0.5	18.6	-7.0	1.3	1.0	3.1
Manufacture of chemicals and chemical products	C20	-3.8	-1.2	-2.3	9.4	-6.9	-0.6
Manufacture of basic pharmaceutical products and pharmaceutical preparations	C21	-5.8	-3.0	1.0	14.3	-2.7	-1.4
Manufacture of rubber and plastic products	C22	-0.4	4.8	-13.3	21.3	1.3	-9.3
Manufacture of other non-metallic mineral products	C23	6.9	6.9	-11.2	11.1	-7.3	-2.1
Manufacture of basic metals	C24	-2.6	3.6	-5.7	64.2	-38.7	0.1
Manufacture of fabricated metal products, except machinery and equipment	C25	11.7	-1.1	-0.6	9.1	-13.1	5.1
Manufacture of computer, electronic and optical products	C26	-11.9	24.9	-19.3	18.1	15.6	-18.4
Manufacture of electrical equipment	C27	2.0	-0.2	9.0	-7.1	-4.2	-2.2
Manufacture of machinery and equipment n.e.c.	C28	-0.4	2.7	1.8	6.2	-1.6	3.9
Manufacture of motor vehicles, trailers and semi-trailers	C29	-1.9	1.9	-13.8	18.3	7.1	-5.6
Manufacture of other transport equipment	C30	42.8	-31.7	22.3	28.1	-18.1	-28.3
Manufacture of furniture	C31	-2.7	0.8	0.3	8.5	-0.2	-9.5
Other manufacturing	C32	-0.6	-11.3	-0.9	17.8	4.7	4.3
Repair and installation of machinery and equipment	C32	32.6	11.4	-8.1	-11.2	0.5	-7.9
Electricity, gas, steam and air conditioning supply	D	-0.7	11.1	7.1	-1.1	-16.9	4.3
Electricity, gas, steam and air conditioning supply	D35	-0.7	11.1	7.1	-1.1	-16.9	4.3

¹ Seasonally adjusted.



Table 2

Percentage changes of Industrial Production Indices compared to the same month of the previous

Economic Activities	NACE.BG -2008 Code	year ¹					
		2012			2013		
		X	XI	XII	I	II	III
Industry	B_TO_E36	-3.0	0.0	6.3	8.3	2.7	-3.6
Mining and quarrying	B	-0.6	-17.0	-5.9	-5.9	-6.1	-22.7
of which:							
Mining of coal and lignite	B05	-9.4	-36.7	-1.3	-0.7	-18.5	-56.9
Mining of metal ores	B07	3.3	25.9	-8.3	-6.3	7.7	-0.6
Other mining and quarrying	B08	28.0	41.0	8.1	-1.8	17.3	9.4
Manufacturing	C	-2.5	0.8	2.3	6.1	7.3	-3.5
of which:							
Manufacture of food products	C10	-3.8	-1.3	-0.9	2.0	-10.6	-12.8
Manufacture of beverages	C11	7.1	5.1	-8.2	24.6	5.2	-8.3
Manufacture of tobacco products	C12	-11.2	-39.9	3.7	-6.4	0.3	10.3
Manufacture of textiles	C13	-4.0	0.8	12.4	25.7	10.0	14.1
Manufacture of wearing apparel	C14	-11.9	4.4	0.9	5.4	11.4	-1.9
Manufacture of leather and related products	C15	-24.2	-9.7	-25.9	-9.6	-11.8	-13.0
Manufacture of wood and of products of wood and cork, except furniture; manufacture of articles of straw and plaiting materials	C16	0.5	4.7	-14.7	4.8	13.6	6.5
Manufacture of paper and paper products	C17	8.8	21.7	86.4	47.0	41.3	13.1
Printing and reproduction of recorded media	C18	-16.0	7.6	2.1	3.6	3.3	4.4
Manufacture of chemicals and chemical products	C20	-10.2	-6.3	-15.3	-8.0	-9.1	-17.2
Manufacture of basic pharmaceutical products and pharmaceutical preparations	C21	3.2	-5.1	-6.2	29.2	14.3	14.6
Manufacture of rubber and plastic products	C22	2.6	20.2	1.6	15.0	29.2	7.9
Manufacture of other non-metallic mineral products	C23	-2.0	15.1	-3.5	8.7	43.1	-0.2
Manufacture of basic metals	C24	-19.5	-8.2	-12.5	27.9	-11.3	3.3
Manufacture of fabricated metal products, except machinery and equipment	C25	-20.8	-11.8	10.0	11.8	-2.2	-0.8
Manufacture of computer, electronic and optical products	C26	-11.9	3.8	2.2	-12.6	16.9	-6.7
Manufacture of electrical equipment	C27	23.1	12.4	31.6	19.8	10.5	0.0
Manufacture of machinery and equipment n.e.c.	C28	0.8	2.6	15.9	8.8	5.7	6.2
Manufacture of motor vehicles, trailers and semi-trailers	C29	-3.8	7.2	-5.8	21.2	30.2	22.4
Manufacture of other transport equipment	C30	58.1	-34.2	47.3	9.6	-5.5	-46.2
Manufacture of furniture	C31	-1.7	3.5	6.3	19.4	32.6	9.1
Other manufacturing	C32	32.4	23.9	22.8	2.9	47.7	30.7
Repair and installation of machinery and equipment	C33	8.9	8.6	7.4	-5.7	-12.8	-10.7
Electricity, gas, steam and air conditioning supply	D	-4.4	6.1	17.0	18.4	-5.2	4.9
Electricity, gas, steam and air conditioning supply	D35	-4.4	6.1	17.0	18.4	-5.2	4.9

¹ Working day adjusted.



Table 3

Industrial Production Indices
(Seasonally adjusted, 2010=100)

NACE.BG - 2008 Code	2012										2013		
	III	IV	V	VI	VII	VIII	IX	X	XI	XII	I	II	III
B_TO_E36	104.0	104.7	106.1	106.0	105.7	107.3	105.3	105.0	106.7	109.7	110.6	105.5	103.0
B	108.0	97.5	103.9	105.3	113.0	112.1	112.7	110.8	82.3	109.9	102.0	96.4	84.8
B05	117.8	104.0	116.0	92.3	113.1	113.1	117.3	108.5	83.5	116.1	103.6	91.0	49.0
B07	97.0	97.1	82.8	112.4	96.4	99.7	98.1	108.3	78.3	112.7	91.1	94.6	96.4
B08	98.1	103.8	100.3	120.2	140.4	121.8	126.1	123.6	124.0	103.3	97.3	101.3	107.0
C	105.0	106.7	107.3	106.8	105.1	106.3	103.9	104.5	105.8	105.6	109.2	107.4	103.4
C10	98.3	95.2	95.3	93.4	94.9	95.3	90.9	92.5	91.9	91.3	92.9	87.1	86.0
C11	101.5	99.2	101.1	102.2	100.0	97.2	100.0	102.5	97.6	89.6	108.5	97.8	94.6
C12	131.2	121.0	135.4	145.6	138.7	120.6	133.8	83.3	78.2	115.4	119.7	127.5	138.8
C13	87.1	88.8	85.4	82.1	79.1	85.1	87.3	90.0	95.2	102.8	107.4	95.7	99.4
C14	95.6	96.2	92.8	99.9	92.3	95.4	91.0	89.8	96.7	96.0	100.4	99.7	94.9
C15	86.0	80.9	91.7	96.4	86.5	93.2	82.0	74.5	81.8	73.7	80.2	76.0	75.9
C16	95.3	100.4	111.4	104.4	105.1	99.1	95.2	100.5	101.2	91.0	104.2	99.9	100.7
C17	106.5	110.8	110.3	105.5	112.7	105.7	106.2	103.3	106.8	110.2	110.0	117.6	115.8
C18	95.8	92.1	92.7	90.7	87.3	84.2	85.3	84.9	100.7	93.6	94.8	95.8	98.8
C20	113.3	91.8	113.4	107.5	97.1	101.2	102.5	98.6	97.4	95.2	104.2	97.0	96.4
C21	116.9	124.5	126.6	127.3	142.5	124.6	132.7	125.0	121.2	122.4	139.9	136.1	134.3
C22	97.8	104.5	107.5	108.1	102.0	107.7	105.5	105.0	110.1	95.4	115.8	117.2	106.3
C23	105.4	110.5	105.4	104.3	106.6	107.9	104.0	111.2	118.9	105.6	117.4	108.8	106.5
C24	95.4	102.0	98.9	99.2	96.3	91.7	95.0	92.6	95.9	90.4	148.5	91.0	91.1
C25	102.6	97.3	114.0	97.9	94.2	99.2	93.3	104.2	103.0	102.4	111.7	97.1	102.1
C26	124.5	133.2	136.8	141.3	110.1	111.7	118.3	104.2	130.2	105.1	124.1	143.5	117.1
C27	118.0	128.2	129.8	131.2	126.8	125.2	127.1	129.7	129.4	141.0	130.9	125.4	122.7
C28	129.2	127.2	131.4	128.3	123.4	131.1	120.1	119.6	122.9	125.1	132.8	130.6	135.7
C29	80.2	82.6	82.4	84.4	86.5	85.5	94.7	92.8	94.6	81.6	96.6	103.4	97.6
C30	120.1	117.2	88.5	139.9	90.2	74.5	80.0	114.2	77.9	95.3	122.1	100.0	71.7
C31	103.4	104.0	117.1	114.1	113.3	115.7	118.7	115.5	116.5	116.9	126.8	126.5	114.5
C32	119.8	126.7	133.5	123.3	121.8	138.4	138.0	137.1	121.6	120.5	141.9	148.6	155.0
C33	87.0	87.0	98.4	89.8	78.7	97.3	71.0	94.2	104.9	96.4	85.6	86.0	79.2
D	100.1	99.4	104.0	103.6	112.2	113.3	105.1	104.3	116.0	124.2	122.9	102.1	106.5
D35	100.1	99.4	104.0	103.6	112.2	113.3	105.1	104.3	116.0	124.2	122.9	102.1	106.5



Table 4

Industrial Production Indices
(Working day adjusted, 2010=100)

NACE.BG - 2008 Code	2010	2011	2012										2013		
	III	III	III	IV	V	VI	VII	VIII	IX	X	XI	XII	I	II	III
B_TO_E36	100.8	108.8	106.8	102.0	103.8	109.6	110.8	106.4	104.6	107.6	110.7	113.7	103.6	96.3	102.9
B	99.0	102.3	106.3	93.1	97.7	101.0	112.7	109.7	116.5	124.3	89.4	117.9	95.3	89.9	82.2
B05	91.4	115.0	116.2	82.0	104.8	73.7	111.0	108.1	123.6	130.7	96.9	128.9	110.4	87.8	50.0
B07	104.5	90.1	97.0	97.1	82.8	112.4	96.4	99.7	98.1	108.3	78.3	112.7	91.1	94.6	96.4
B08	104.4	80.5	88.7	101.1	104.0	131.4	156.0	131.7	139.6	143.2	140.1	109.9	62.7	72.6	97.1
C	98.7	106.3	106.4	106.3	110.2	117.3	112.6	106.6	106.8	109.3	110.3	101.7	93.5	92.6	102.7
C10	94.2	93.6	97.2	91.7	92.6	95.9	96.2	98.9	98.5	101.8	97.9	95.6	77.7	75.1	84.8
C11	95.9	88.5	95.3	98.0	109.2	124.7	126.9	121.8	109.6	94.3	89.6	93.0	69.4	63.2	87.4
C12	98.3	88.7	122.3	106.2	145.0	173.2	160.2	122.9	139.7	98.5	86.2	111.4	89.5	95.2	134.9
C13	107.7	111.6	97.7	99.3	93.4	93.8	83.5	68.0	82.3	89.1	100.4	90.8	91.7	91.8	111.5
C14	98.0	98.6	95.1	88.1	83.7	108.3	106.9	95.3	88.0	87.3	96.2	97.5	101.7	99.1	93.3
C15	97.9	107.0	86.3	66.4	80.6	108.1	107.5	96.6	89.9	74.4	79.7	65.9	79.4	71.8	75.1
C16	95.6	99.3	90.1	96.6	110.5	114.5	116.9	103.2	105.5	114.4	111.5	86.6	80.1	78.9	95.9
C17	90.0	119.1	111.9	115.7	112.8	115.4	120.3	106.5	109.1	98.2	102.5	105.3	100.3	110.6	126.6
C18	96.7	92.1	91.1	87.0	87.1	94.0	86.7	84.8	89.1	93.4	112.7	107.6	79.4	84.7	95.0
C20	101.8	111.5	125.6	95.2	111.8	111.9	97.7	95.4	103.3	95.9	100.6	94.2	97.2	91.2	104.0
C21	98.0	113.4	121.4	122.7	122.3	146.2	133.0	121.2	134.9	136.3	126.4	120.1	112.9	137.4	139.2
C22	95.2	106.3	97.8	101.4	105.8	118.0	112.0	112.2	113.0	117.8	118.7	86.7	93.8	98.4	105.6
C23	90.7	106.1	103.0	114.9	112.7	116.8	116.9	112.6	113.7	126.1	129.3	88.6	83.1	86.9	102.7
C24	111.6	112.5	86.1	123.1	100.7	99.5	113.2	80.6	89.4	97.5	109.8	68.3	139.2	88.8	89.0
C25	101.6	113.4	105.8	97.6	112.4	105.0	97.3	98.4	95.2	104.8	108.8	120.7	81.5	85.5	104.9
C26	93.5	118.2	128.5	130.3	133.2	150.0	108.8	101.0	125.4	104.9	136.9	129.9	106.2	127.1	119.8
C27	99.9	106.5	118.7	128.6	126.3	143.4	136.5	110.5	131.2	140.9	140.5	136.3	114.0	111.1	118.7
C28	97.8	115.3	138.2	125.6	130.5	143.8	132.4	122.2	120.9	123.7	126.9	119.2	112.7	123.8	146.8
C29	109.4	96.1	82.9	84.8	84.5	89.8	85.9	74.8	95.8	99.1	105.4	75.6	89.8	96.8	101.5
C30	109.4	112.5	132.7	107.9	122.1	173.5	93.4	69.1	77.5	99.9	67.5	102.1	77.6	82.0	71.3
C31	98.2	108.3	103.7	99.6	114.2	120.9	117.6	116.9	122.4	126.3	125.9	123.8	105.3	110.0	113.1
C32	104.9	108.6	117.7	122.8	134.0	140.0	121.7	141.4	149.3	160.3	128.7	109.5	115.1	128.2	153.9
C33	106.5	89.6	86.7	79.6	92.0	93.8	78.7	97.2	73.6	98.6	116.9	133.0	58.5	72.2	77.5
D	109.3	121.3	110.3	91.5	86.8	89.3	104.3	103.9	92.1	98.3	124.6	149.7	141.9	112.3	115.7
D35	109.3	121.3	110.3	91.5	86.8	89.3	104.3	103.9	92.1	98.3	124.6	149.7	141.9	112.3	115.7