

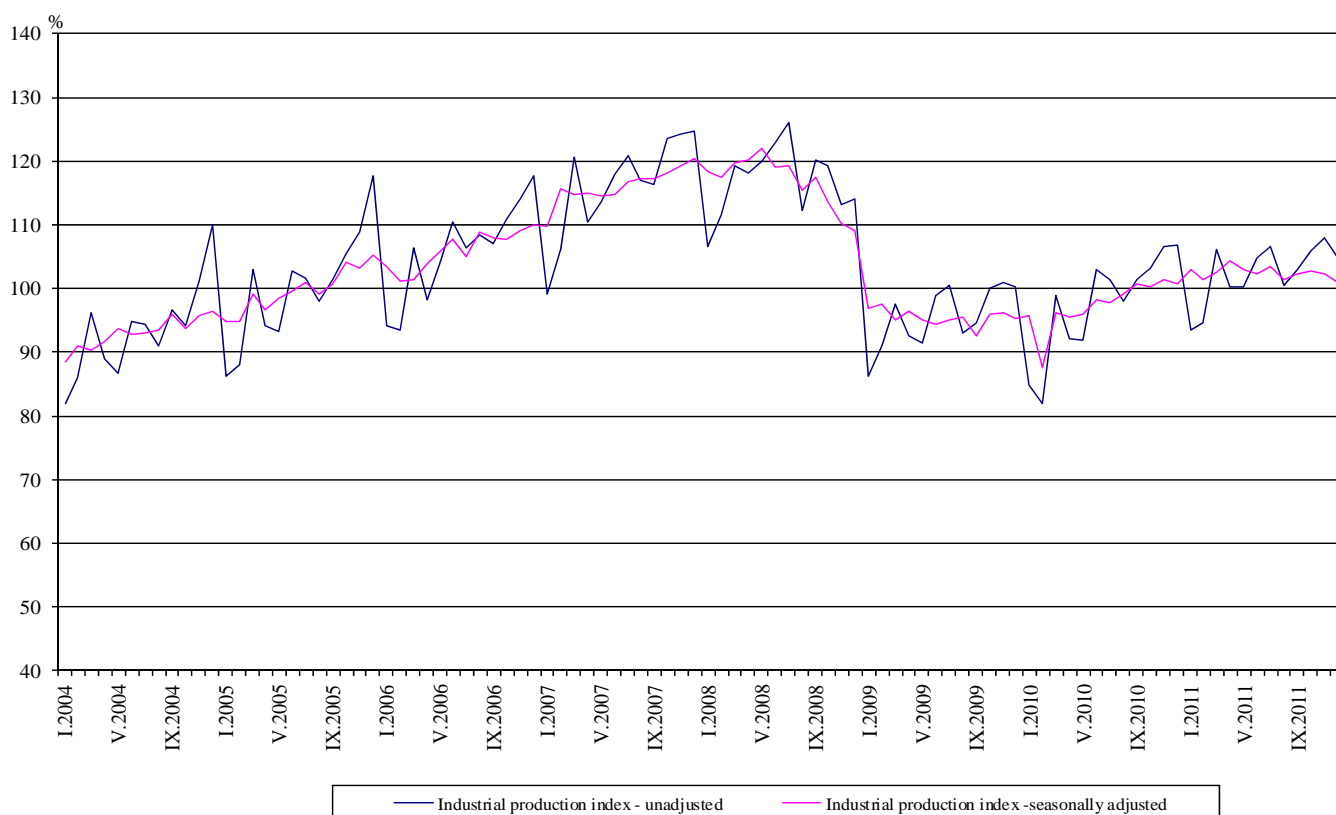


Industrial Production Indices in December 2011¹

The preliminary data showed that the Industrial Production Index², seasonally adjusted³, decreased by 1.3% in December 2011 as compared to November 2011.

In December 2011 working day adjusted⁴ Industrial Production Index fell by 0.6% as compared to the same month of 2010.

Figure 1. Industrial Production Indices
(2005=100)



¹December 2011 data are preliminary.

² Monthly Industrial Production and Industrial turnover indices measure changes in **production and turnover values** of industrial enterprises. This information can be used to access the current economic development and for short-term forecasts. Indices do not measure the actual production level, it aims to measure the average change in value of production between two points of time

Indices are compiled on the base of information collected through representative sampling survey on industrial enterprises. The sample covers enterprises with annual turnover more than 97% of total turnover in industry.

Industrial production indices are calculated at constant base year (2005) that is to say they are weighted with the structure of the value added at factor costs in the base year.

³ **Seasonal adjustment** is a statistical method, which eliminates the seasonal component of time series and it is particularly suitable for long-term comparisons and analysis of the data.

⁴ **Working day adjustment** is an adjustment for variations caused by calendar effects, different number of calendar and working days in the months, national holidays and outliers (for example the presence of more non-working days in May could contribute to the decline in the production in some activities).

The seasonally and working day adjusted data on Industrial production index for the period 2000-2010 can be found in NSI internet web-site: (<http://www.nsi.bg/otrasalen.php?otr=46>).

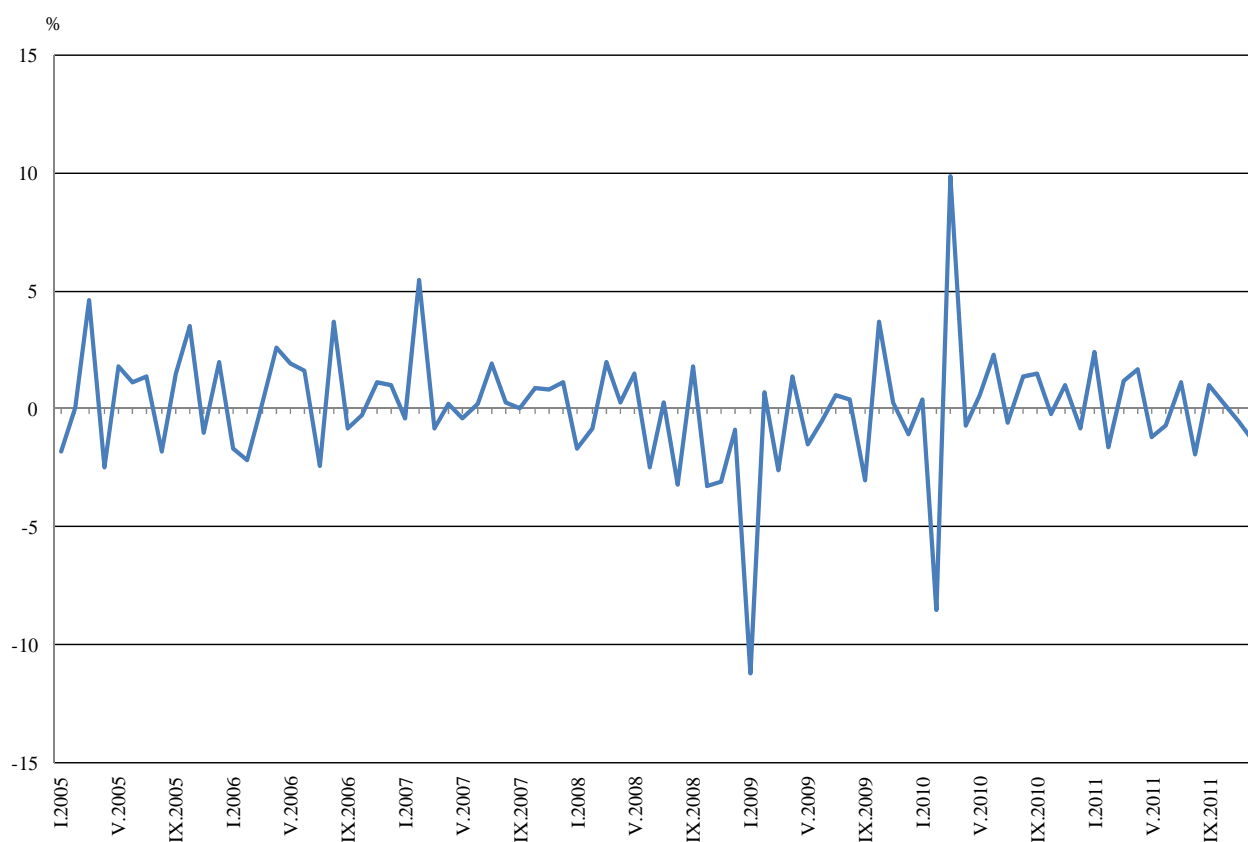


Monthly comparisons

In December 2011 as compared to November 2011, the seasonally adjusted Industrial Production Index in the manufacturing decreased by 13.8% and in the electricity, gas, steam and air conditioning supply by 6.0%, while in the mining and quarrying industry an increase by 17.3% was registered.

The most significant decreases of production in the manufacturing were seen in the manufacture of paper and paper products by 31.6%, in the manufacture of fabricated metal products, except machinery and equipment by 22.7%, in the manufacture of basic metals by 13.9%, in the manufacture of machinery and equipment by 10.3%. There was increase in the manufacture of chemicals and chemical products by 9.2%, in the manufacture of wood and of products of wood and cork, except furniture; manufacture of articles of straw and plaiting materials by 7.6%, in the manufacture of basic pharmaceutical products and pharmaceutical preparations by 1.3%.

Figure 2. Percentage changes of Industrial Production Indices compared to the previous month (Seasonally adjusted)



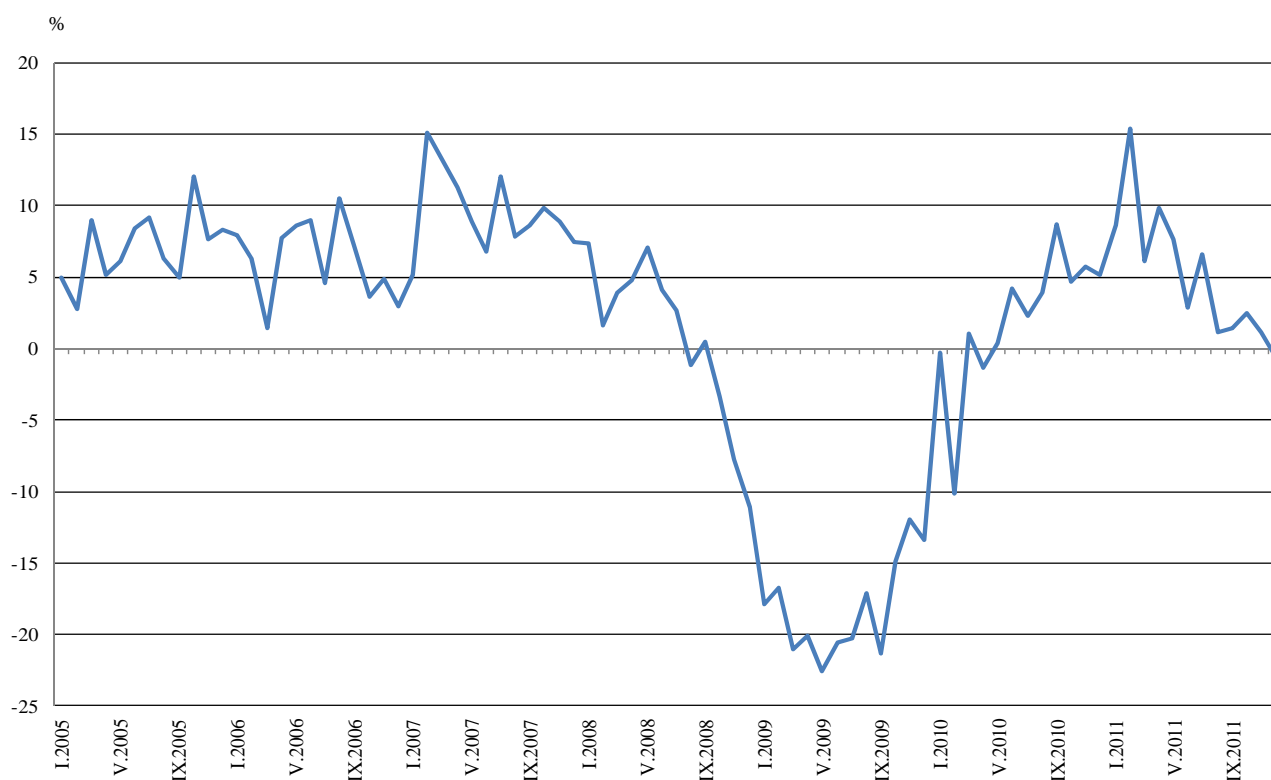


Annual comparisons

On annual bases in December 2011 Industrial Production Index, calculated from working day adjusted data in the manufacturing decreased by 3.0%, in the mining and quarrying industry increased by 20.4%, while in the electricity, gas, steam and air conditioning supply there was no change.

Decrease was registered in the production of investment goods by 9.9%, while increases were seen in the production of energy by 1.9% and in the production of intermediate goods by 1.2%.

**Figure 3. Percentage changes of Industrial Production Indices compared to the same month of the previous year
(working day adjusted)**



The final data on Industrial Production and Turnover Indices for November 2011 can be found in NSI internet web-site: (<http://www.nsi.bg/otrasalen.php?otr=46>).



Table 1

Percentage changes of Industrial Production Indices compared to the previous month¹

Economic Activities	NACE.BG - 2008 Code	2011					
		VII	VIII	IX	X	XI	XII
Industry	B_TO_E36	1.1	-1.9	1.0	0.3	-0.5	-1.3
Mining and quarrying	B	11.4	-5.5	9.8	9.3	-13.2	17.3
of which:							
Mining of coal and lignite	B05	-4.8	7.4	-1.6	2.2	6.1	-5.1
Mining of metal ores	B07	41.8	-17.9	20.7	-7.4	-39.3	100.4
Other mining and quarrying	B08	6.3	-3.5	-10.7	11.1	-7.3	3.5
Manufacturing	C	-0.2	-3.3	3.7	-0.1	-0.9	-13.8
of which:							
Manufacture of food products	C10	2.3	-2.7	1.5	1.9	-2.8	-3.0
Manufacture of beverages	C11	5.2	-4.6	6.5	-7.1	-6.8	-5.7
Manufacture of tobacco products	C12	-8.5	-3.4	-7.0	-2.2	30.3	-9.6
Manufacture of textiles	C13	-11.5	19.1	-13.6	-5.6	6.5	1.4
Manufacture of wearing apparel	C14	1.4	-1.2	-1.3	-5.7	-3.6	1.6
Manufacture of leather and related products	C15	1.4	-1.6	0.3	-3.5	-1.2	0.9
Manufacture of wood and of products of wood and cork, except furniture; manufacture of articles of straw and plaiting materials	C16	2.6	-1.8	0.2	-3.6	-5.3	7.6
Manufacture of paper and paper products	C17	-4.9	-7.7	-2.5	-20.8	-6.2	-31.6
Printing and reproduction of recorded media	C18	2.1	-11.3	2.4	14.6	-3.1	-4.8
Manufacture of chemicals and chemical products	C20	0.3	1.4	-3.5	-3.6	-4.0	9.2
Manufacture of basic pharmaceutical products and pharmaceutical preparations	C21	-1.5	-1.5	0.4	6.0	3.5	1.3
Manufacture of rubber and plastic products	C22	-2.9	2.5	1.7	-5.6	-8.1	-3.6
Manufacture of other non-metallic mineral products	C23	-3.9	-3.7	8.3	-1.7	-6.9	-2.4
Manufacture of basic metals	C24	4.1	-6.8	-10.4	19.1	1.1	-13.9
Manufacture of fabricated metal products, except machinery and equipment	C25	4.6	-11.8	17.7	9.3	-11.4	-22.7
Manufacture of computer, electronic and optical products	C26	5.6	-11.3	-8.5	7.4	9.6	-20.8
Manufacture of electrical equipment	C27	-1.2	-3.2	-6.8	3.2	8.1	-3.1
Manufacture of machinery and equipment n.e.c.	C28	-3.0	-5.4	6.7	-1.8	0.4	-10.3
Manufacture of motor vehicles, trailers and semi-trailers	C29	0.9	-4.9	0.0	3.7	-4.7	-4.1
Manufacture of other transport equipment	C30	-12.7	-33.7	59.3	-11.0	30.5	-41.4
Manufacture of furniture	C31	2.3	2.6	-2.6	2.5	-4.0	-3.0
Other manufacturing	C32	4.9	-11.2	-6.0	-6.4	-6.0	3.8
Repair and installation of machinery and equipment	C32	-10.2	15.9	40.5	-24.1	15.7	-6.9
Electricity, gas, steam and air conditioning supply	D	8.7	-6.4	-7.0	7.4	1.6	-6.0
Electricity, gas, steam and air conditioning supply	D35	8.7	-6.4	-7.0	7.4	1.6	-6.0

¹ Seasonally adjusted.



Table 2

Percentage changes of Industrial Production Indices compared to the same month of the previous year¹

Economic Activities	NACE.BG - 2008 Code	2011					
		VII	VIII	IX	X	XI	XII
Industry	B_TO_E36	6.6	1.1	1.4	2.5	1.1	-0.6
Mining and quarrying	B	10.5	7.4	7.3	12.9	-7.0	20.4
of which:							
Mining of coal and lignite	B05	12.7	20.0	14.8	9.6	20.3	18.4
Mining of metal ores	B07	5.7	-12.9	2.8	15.5	-41.2	28.6
Other mining and quarrying	B08	7.6	6.7	-18.2	1.5	-10.6	-4.5
Manufacturing	C	6.4	1.1	2.6	2.6	-0.7	-3.0
of which:							
Manufacture of food products	C10	-4.8	-7.8	-9.9	-2.5	-9.8	-7.6
Manufacture of beverages	C11	3.7	-6.6	2.6	3.9	-13.5	-14.7
Manufacture of tobacco products	C12	-2.2	0.2	-3.1	-8.4	24.6	4.1
Manufacture of textiles	C13	-6.7	27.5	0.1	-5.8	5.0	12.1
Manufacture of wearing apparel	C14	4.8	5.1	-0.3	-7.9	-12.4	-7.5
Manufacture of leather and related products	C15	7.4	-1.6	0.7	-9.7	-8.4	-0.8
Manufacture of wood and of products of wood and cork, except furniture; manufacture of articles of straw and plaiting materials	C16	2.8	2.5	0.8	-7.3	-4.4	5.3
Manufacture of paper and paper products	C17	18.8	-3.9	-1.9	-1.8	-23.8	-45.7
Printing and reproduction of recorded media	C18	4.9	-8.9	-18.6	0.8	-1.7	-2.7
Manufacture of chemicals and chemical products	C20	14.4	9.0	3.4	0.4	-17.2	16.8
Manufacture of basic pharmaceutical products and pharmaceutical preparations	C21	16.3	13.7	4.6	14.4	29.4	29.7
Manufacture of rubber and plastic products	C22	-0.6	5.2	-0.5	1.0	-13.1	-12.9
Manufacture of other non-metallic mineral products	C23	9.2	3.6	9.9	13.5	-3.5	6.0
Manufacture of basic metals	C24	12.8	7.8	-11.9	9.2	22.2	0.0
Manufacture of fabricated metal products, except machinery and equipment	C25	19.5	2.5	16.0	23.0	4.6	-1.7
Manufacture of computer, electronic and optical products	C26	29.6	12.2	8.3	5.9	17.8	-11.8
Manufacture of electrical equipment	C27	13.8	11.4	-7.0	-2.7	15.7	8.1
Manufacture of machinery and equipment n.e.c.	C28	18.1	2.5	12.2	6.5	11.3	-0.6
Manufacture of motor vehicles, trailers and semi-trailers	C29	9.2	7.4	-19.1	-7.7	-5.1	-19.8
Manufacture of other transport equipment	C30	-11.4	-67.2	2.8	8.5	56.2	-38.2
Manufacture of furniture	C31	19.5	18.9	1.5	11.0	2.1	8.6
Other manufacturing	C32	45.4	19.6	2.9	-6.9	-26.7	-13.4
Repair and installation of machinery and equipment	C33	-30.4	-30.4	39.4	-17.6	13.3	-12.5
Electricity, gas, steam and air conditioning supply	D	7.3	-0.6	-5.3	-1.9	10.5	0.0
Electricity, gas, steam and air conditioning supply	D35	7.3	-0.6	-5.3	-1.9	10.5	0.0

¹ Working day adjusted.



Table 3

Industrial Production Indices
(Seasonally adjusted, 2005=100)

NACE.BG - 2008 Code	2010	2011											
	XII	I	II	III	IV	V	VI	VII	VIII	IX	X	XI	XII
B_TO_E36	100.6	103.0	101.4	102.6	104.3	103.0	102.3	103.4	101.4	102.4	102.7	102.2	100.9
B	79.3	79.3	68.9	77.2	78.3	86.1	74.4	82.9	78.3	86.0	94.0	81.6	95.7
B05	99.5	103.5	107.1	115.4	133.6	140.3	119.6	113.8	122.2	120.3	123	130.5	123.8
B07	70.1	86.8	62.0	66.2	61.0	60.9	56.5	80.1	65.8	79.4	73.5	44.6	89.4
B08	65.0	64.3	66.1	56.4	63.5	66.9	63.7	67.7	65.3	58.3	64.8	60.1	62.2
C	91.3	106.9	100.9	100.6	101.6	103.2	103.8	103.6	100.2	103.9	103.8	102.9	88.7
C10	114.6	118.6	119.1	111.1	112.0	107.9	109.1	111.6	108.6	110.2	112.3	109.1	105.8
C11	82.9	91.7	94.3	85.3	87.7	86.9	85.4	89.8	85.7	91.3	84.8	79.0	74.5
C12	101.2	114.7	112.1	102.2	106.2	99.8	110.1	100.7	97.3	90.5	88.5	115.3	104.2
C13	63.3	69.5	69.8	66.6	74.3	74.8	76.5	67.7	80.6	69.6	65.7	70.0	71.0
C14	69.0	70.8	71.4	67.7	69.6	69.9	71.1	72.1	71.2	70.3	66.3	63.9	64.9
C15	77.7	76.3	75.9	78.3	77.0	78.2	79.6	80.7	79.4	79.6	76.8	75.9	76.6
C16	83.3	88.3	87.4	83.1	86.1	79.5	88.0	90.3	88.7	88.9	85.7	81.2	87.4
C17	131.4	150.0	138.2	147.4	148.9	161.1	160.7	152.9	141.2	137.6	109.0	102.2	69.9
C18	106.7	112.9	112.3	109.0	99.9	105.3	106.3	108.5	96.2	98.5	112.9	109.4	104.2
C20	94.7	117.2	120.8	101.6	108.3	118.6	111.2	111.5	113.1	109.1	105.2	101.0	110.3
C21	85.5	84.0	89.6	90.2	95.0	91.6	98.5	97.0	95.5	95.9	101.7	105.3	106.7
C22	114.2	120.6	119.9	115.0	108.7	123.5	118.2	114.8	117.7	119.7	113.0	103.8	100.1
C23	75.5	88.7	92.6	89.7	85.6	86.1	90.6	87.1	83.9	90.9	89.4	83.2	81.2
C24	92.9	105.2	98.1	98.8	103.2	113.7	106.6	111.0	103.5	92.7	110.4	111.6	96.1
C25	88.0	113.2	90.0	108.4	106.2	108.6	109.0	114.0	100.6	118.4	129.4	114.7	88.7
C26	118.1	126.8	130.8	120.1	112.4	125.6	132.8	140.3	124.4	113.8	122.2	133.9	106.1
C27	141.6	153.5	156.4	152.7	151.3	153.2	162.3	160.3	155.2	144.7	149.3	161.4	156.4
C28	108.3	113.7	118.9	123.1	119.2	128.6	129.4	125.5	118.7	126.6	124.3	124.8	111.9
C29	164.7	157.8	151.1	150.6	150.5	155.9	151.6	152.9	145.4	145.4	150.8	143.7	137.8
C30	70.6	110.7	92.5	95.0	96.7	121.8	79.8	69.7	46.2	73.6	65.5	85.5	50.1
C31	98.5	108.6	106.5	104.0	104.9	108.1	111.1	113.6	116.5	113.5	116.3	111.6	108.2
C32	146.3	167.8	143.6	138.4	130.2	153.5	159.8	167.6	148.8	139.8	130.9	123.0	127.7
C33	124.7	117.5	113.8	101.7	108.8	91.8	89.2	80.1	92.8	130.4	99.0	114.5	106.6
D	107.4	106.5	115.1	116.4	123.1	115.4	112.1	121.9	114.1	106.1	113.9	115.7	108.8
D35	107.4	106.5	115.1	116.4	123.1	115.4	112.1	121.9	114.1	106.1	113.9	115.7	108.8



Table 4

Industrial Production Indices
(Working day adjusted, 2005=100)

NACE.BG - 2008 Code	2008	2009	2010	2011											
	XII	XII	XII	I	II	III	IV	V	VI	VII	VIII	IX	X	XI	XII
B_TO_E36	117.6	101.8	107.1	94.9	95.0	105.3	101.9	103.4	105.3	108.2	99.4	105.0	107.6	108.6	106.5
B	70.0	78.8	79.8	79.8	69.3	77.7	78.8	86.6	74.8	83.3	78.7	86.4	94.4	82.0	96.1
B05	114.5	98.9	110.2	117.1	112.1	112.7	113.9	131.9	108.3	108.2	113.2	122.5	141.7	150.9	130.5
B07	33.2	78.3	73.5	75.9	53.4	68.0	67.2	70.5	61.1	80.3	63.7	80.1	79.7	47.6	94.5
B08	111.8	79.6	71.9	41.6	53.3	53.6	62.2	74.2	68.5	70.8	68.9	63.0	73.9	66.4	68.7
C	114.4	96.0	103.3	88.4	89.2	104.0	99.9	107.6	111.5	110.2	100.4	110.0	108.7	107.8	100.2
C10	137.1	126.2	126.9	100.2	102.4	110.6	108.5	112.5	112.0	112.6	112.2	122.8	123.3	117.9	117.3
C11	146.8	103.5	102.3	57.8	62.4	78.8	86.0	98.0	101.7	111.6	107.2	100.9	76.7	76.4	87.3
C12	129.5	98.7	104.6	80.3	73.7	87.2	91.4	108.4	126.7	117.0	115.8	108.9	107.5	140.8	108.9
C13	82.0	59.9	58.8	57.0	69.0	76.1	81.7	89.3	90.8	73.5	64.9	70.1	66.2	75.3	65.9
C14	95.5	74.8	75.8	70.2	71.7	69.0	63.9	68.9	74.0	83.7	69.7	72.4	68.0	64.9	70.1
C15	92.2	67.4	71.7	75.7	74.1	84.1	69.7	70.5	81.3	98.2	75.7	89.6	76.6	69.6	71.1
C16	86.8	73.2	82.4	72.0	76.3	82.9	84.7	81.0	93.9	95.8	90.5	97.3	93.3	89.2	86.8
C17	107.1	87.2	133.4	144.4	130.3	149.2	149.6	164.8	166.4	156.8	141.6	142.3	109.5	104.9	72.4
C18	161.9	130.7	128.0	93.7	97.7	104.4	96.6	108.1	111.6	108.9	100.8	109.3	124.0	119.7	124.6
C20	90.6	90.0	93.6	106.7	114.1	107.1	109.9	118.8	115.5	112.2	105.1	110.8	100.3	103.5	109.3
C21	103.9	93.4	91.2	72.6	90.9	99.5	96.0	98.2	114.8	85.4	95.7	102.1	115.5	118.7	118.3
C22	124.2	105.8	114.3	97.4	102.9	118.7	108.1	124.8	128.3	126.4	119.9	129.1	126.9	112.4	99.6
C23	117.0	69.9	72.9	58.5	70.0	85.6	87.8	95.3	100.2	97.1	89.6	103.5	102.7	90.9	77.3
C24	80.7	78.2	77.8	94.5	96.5	108.5	103.9	115.9	106.3	118.9	100.8	83.9	117.4	115.4	77.8
C25	165.4	92.4	112.4	81.5	79.6	112.1	107.5	110.2	117.9	118.7	100.9	124.0	127.6	122.3	110.5
C26	115.3	141.9	156.6	106.9	109.5	124.0	108.5	129.1	136.6	136.7	111.0	123.3	121.9	140.5	138.1
C27	147.2	144.0	146.8	142.8	145.8	155.3	146.5	154.4	169.7	169.1	140.0	161.5	166.1	185.5	158.7
C28	145.4	102.6	116.9	97.1	109.6	131.2	117.5	132.3	142.7	135.2	108.7	134.9	132.2	136.0	116.2
C29	73.8	121.4	158.2	156.5	130.4	150.0	139.5	160.2	154.6	147.8	132.7	129.9	156.8	153.8	126.9
C30	197.2	106.2	93.8	56.2	65.6	91.9	76.8	179.9	80.0	76.2	48.3	80.5	53.9	84.5	58.0
C31	159.8	99.3	112.8	91.9	95.1	108.8	103.9	114.9	117.8	117.1	116.3	120.8	126.7	123.4	122.5
C32	123.5	104.7	143.0	133.9	124.2	137.8	126.7	164.8	179.0	167.2	146.8	155.1	152.8	134.4	123.9
C33	147.8	117.4	170.5	80.6	93.7	101.7	100.1	86.5	94.3	83.2	91.6	144.0	102.8	125.8	149.2
D	151.8	133.4	134.6	125.6	128.5	129.2	115.6	97.5	96.9	112.0	103.2	93.8	109.3	124.6	134.6
D35	151.8	133.4	134.6	125.6	128.5	129.2	115.6	97.5	96.9	112.0	103.2	93.8	109.3	124.6	134.6