

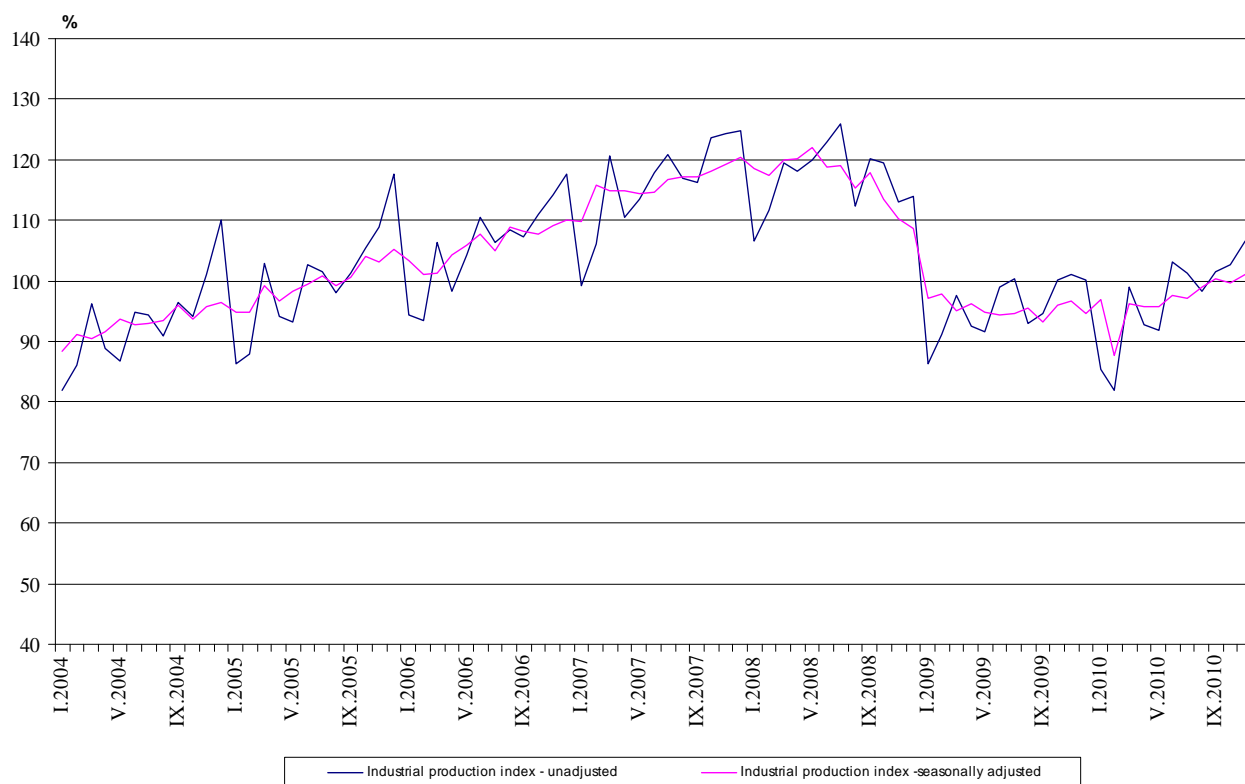


Industrial Production Indices in November 2010¹

The preliminary data showed that the Industrial Production Index², seasonally adjusted³, increased by 1.3% in November 2010 as compared to October 2010.

In November 2010 working day adjusted⁴ Industrial Production Index rose by 5.6% as compared to the same month of 2009.

Figure 1. Industrial Production Indices (2005=100)



¹ November 2010 data are preliminary.

² Monthly Industrial Production and Industrial turnover indices measure changes in **production and turnover values** of industrial enterprises. This information can be used to assess the current economic development and for short-term forecasts. Indices do not measure the actual production level, it aims to measure the average change in value of production between two points of time

Indices are compiled on the base of information collected through representative sampling survey on industrial enterprises. The sample covers enterprises with annual turnover more than 97% of total turnover in industry.

Industrial production indices are calculated at constant base year (2005) that is to say they are weighted with the structure of the value added at factor costs in the base year.

³ **Seasonal adjustment** is a statistical method, which eliminates the seasonal component of time series and it is particularly suitable for long-term comparisons and analysis of the data.

⁴ **Working day adjustment** is an adjustment for variations caused by calendar effects, different number of calendar and working days in the months, national holidays and outliers (for example the presence of more non-working days in May could contribute to the decline in the production in some activities).

The seasonally and working day adjusted data on Industrial production index for the period 2000-2010 can be found in NSI internet web-site: (<http://www.nsi.bg/otrasalen.php?otr=46>).

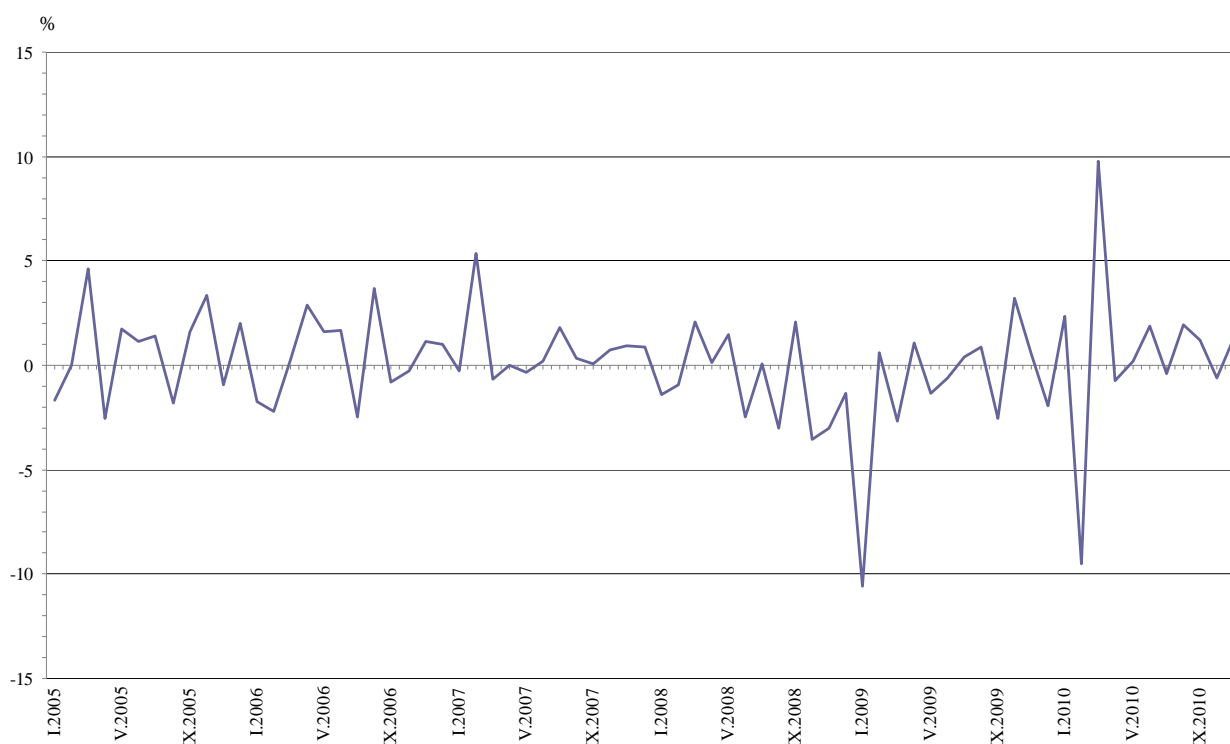


Monthly comparisons

In November 2010 as compared to October 2010, the seasonally adjusted Industrial Production Index in the mining and quarrying industry increased by 6.2%, in manufacturing by 2.2%, while in the electricity, gas, steam and air conditioning supply the decrease by 10.2% was registered.

The most significant increases of production in the manufacturing were seen in the manufacture of paper and paper products by 25.5%, in the manufacture of chemicals and chemical products by 14.2%, in the manufacture of beverages by 10.6%, in the manufacture of basic pharmaceutical products and pharmaceutical preparations by 7.4%, in the manufacture of rubber and plastic products by 5.4%. There were decreases in the repair and installation of machinery and equipment by 12.5%, in the manufacture of basic metals by 10.0%, in the manufacture of wood and of products of wood and cork, except furniture by 9.9%.

Figure 2. Percentage changes of Industrial Production Indices compared to the previous month (seasonally adjusted)



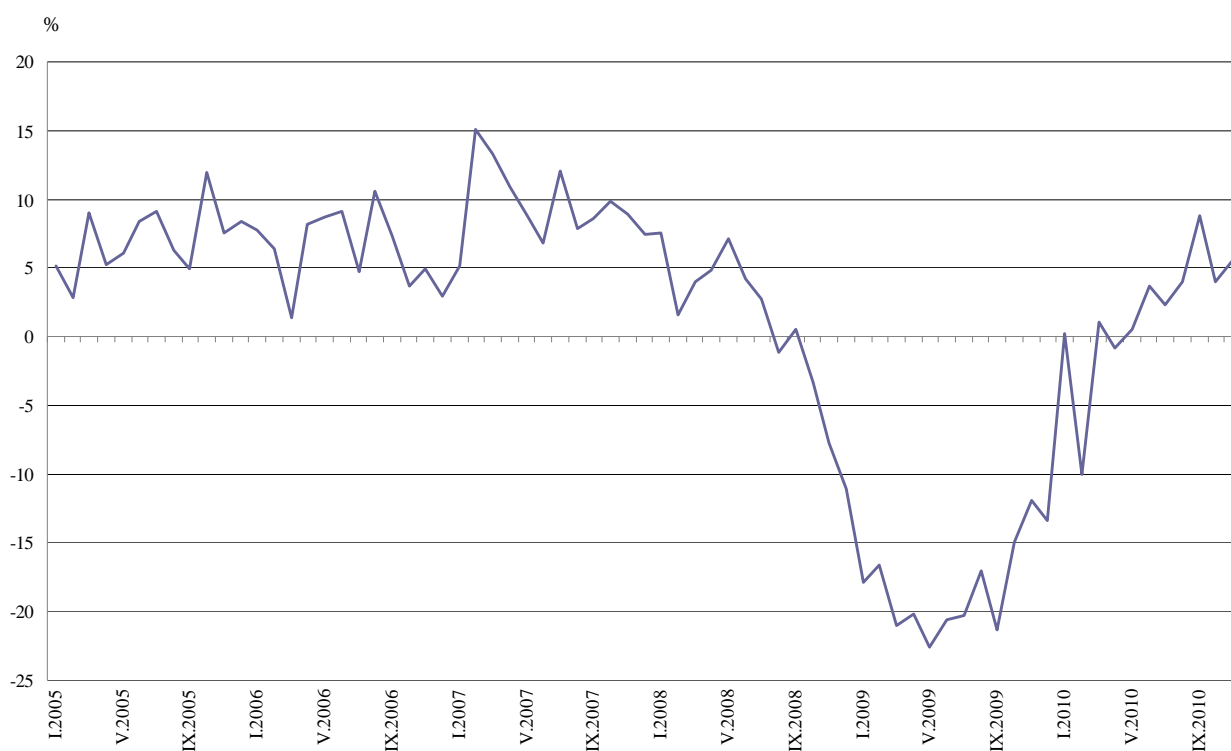


Annual comparisons

On annual bases in November 2010 Industrial Production Index, calculated from working day adjusted data in the manufacturing grew by 11.3%, while decreases were seen in the electricity, gas, steam and air conditioning supply by 7.4% and in the mining and quarrying industry by 0.7%.

Increases were registered in the production of investment goods by 16.3%, in the production of intermediate goods by 8.4%, while in the production of energy a drop by 0.2% was observed.

Figure 3. Percentage changes of Industrial Production Indices compared to the same month of the previous year
(working day adjusted)



The final data on Industrial Production and Turnover Indices for October 2010 can be found in NSI internet web-site: (<http://www.nsi.bg/otrasalen.php?otr=46>).



Table 1

Percentage changes of Industrial Production Indices compared to the previous month¹

Economic Activities	NACE.BG 2008 Code	2010					
		VI	VII	VIII	IX	X	XI
Industry	B_TO_E36	1.9	-0.4	2.0	1.2	-0.6	1.3
Mining and quarrying	B	7.7	-5.6	-1.4	2.9	-2.1	6.2
of which:							
Mining of coal and lignite	B05	4.2	-5.2	6.1	0.3	5.2	-1.5
Mining of metal ores	B07	7.1	0.5	-2.6	3.1	-17.2	21.8
Other mining and quarrying	B08	0.0	-5.1	-2.1	11.3	-5.2	6.1
Manufacturing	C	1.5	-1.0	2.6	2.6	-1.7	2.2
of which:							
Manufacture of food products	C10	-0.7	-3.3	0.8	3.8	-5.4	4.1
Manufacture of beverages	C11	0.0	2.1	2.7	-1.0	-9.4	10.6
Manufacture of tobacco products	C12	11.9	-2.4	-7.4	-8.7	3.9	2.5
Manufacture of textiles	C13	-0.3	1.3	-5.7	5.9	-2.7	-3.5
Manufacture of wearing apparel	C14	-3.3	7.4	-3.3	7.0	1.0	-1.9
Manufacture of leather and related products	C15	4.4	1.3	3.4	1.1	-1.6	-0.5
Manufacture of wood and of products of wood and cork, except furniture; manufacture of articles of straw and plaiting materials	C16	3.8	7.2	-1.6	2.2	5.1	-9.9
Manufacture of paper and paper products	C17	30.8	-8.7	8.3	-4.8	-21.4	25.5
Printing and reproduction of recorded media	C18	-13.4	3.0	1.9	13.7	-6.8	-3.6
Manufacture of chemicals and chemical products	C20	-4.1	9.4	6.5	1.5	-0.6	14.2
Manufacture of basic pharmaceutical products and pharmaceutical preparations	C21	1.4	-3.0	2.4	3.4	-10.2	7.4
Manufacture of rubber and plastic products	C22	-0.4	2.9	-2.9	8.2	-6.8	5.4
Manufacture of other non-metallic mineral products	C23	3.6	-8.5	1.1	2.0	-2.9	4.5
Manufacture of basic metals	C24	-6.9	6.3	-2.8	4.0	1.2	-10.0
Manufacture of fabricated metal products, except machinery and equipment	C25	5.0	-4.6	1.6	5.5	4.9	5.2
Manufacture of computer, electronic and optical products	C26	7.1	7.9	1.1	-6.2	10.7	-3.3
Manufacture of electrical equipment	C27	-2.4	-0.1	-0.1	6.3	-2.7	-4.4
Manufacture of machinery and equipment n.e.c.	C28	2.9	-1.8	6.1	-0.2	2.5	-1.4
Manufacture of motor vehicles, trailers and semi-trailers	C29	-1.6	-7.5	4.4	5.3	0.3	1.4
Manufacture of other transport equipment	C30	-25.3	-9.2	48.8	-41.7	-23.1	8.2
Manufacture of furniture	C31	2.7	-0.7	5.0	13.0	-5.2	3.0
Other manufacturing	C32	-6.8	-8.3	7.2	8.0	3.8	18.3
Repair and installation of machinery and equipment	C32	21.2	-1.8	15.7	-23.2	19.2	-12.5
Electricity, gas, steam and air conditioning supply	D	8.9	1.5	-1.0	-4.6	5.2	-10.2
Electricity, gas, steam and air conditioning supply	D35	8.9	1.5	-1.0	-4.6	5.2	-10.2

¹Seasonally adjusted.



Table 2

Percentage changes of Industrial Production Indices compared to the same month of the previous year ¹

Economic Activities	NACE.BG 2008 Code	2010					
		VI	VII	VIII	IX	X	XI
Industry	B_TO_E36	4.2	2.4	4.0	8.8	4.0	5.6
Mining and quarrying	B	14.3	1.7	1.2	17.8	-8.7	-0.7
of which:							
Mining of coal and lignite	B05	34.8	14.1	42.0	20.8	6.6	6.2
Mining of metal ores	B07	14.8	-1.0	-14.0	21.1	-23.8	-6.6
Other mining and quarrying	B08	-18.4	-18.6	-22.7	1.2	-8.0	-3.2
Manufacturing	C	5.9	4.4	5.6	12.8	5.5	11.3
of which:							
Manufacture of food products	C10	9.5	2.3	7.4	16.7	8.3	12.9
Manufacture of beverages	C11	-9.5	-9.4	-4.5	3.8	-19.1	-0.7
Manufacture of tobacco products	C12	5.0	5.1	-19.2	-30.6	-15.4	-16.6
Manufacture of textiles	C13	3.4	7.0	-3.9	9.4	4.8	2.8
Manufacture of wearing apparel	C14	-13.1	-6.3	-6.5	5.2	0.8	4.3
Manufacture of leather and related products	C15	0.7	-12.1	17.9	12.4	0.3	1.6
Manufacture of wood and of products of wood and cork, except furniture; manufacture of articles of straw and plaiting materials	C16	15.6	15.8	25.2	25.7	31.2	8.9
Manufacture of paper and paper products	C17	130.9	85.7	110.3	78.8	41.8	74.6
Printing and reproduction of recorded media	C18	-26.9	-12.5	3.5	17.7	-6.1	-8.4
Manufacture of chemicals and chemical products	C20	13.5	24.9	39.4	41.5	16.1	45.6
Manufacture of basic pharmaceutical products and pharmaceutical preparations	C21	25.4	11.6	8.1	24.7	-26.9	8.2
Manufacture of rubber and plastic products	C22	7.6	12.6	9.9	13.1	6.0	12.8
Manufacture of other non-metallic mineral products	C23	-0.4	-5.8	-2.5	5.1	0.9	8.6
Manufacture of basic metals	C24	0.1	3.1	0.5	9.3	-0.5	-15.2
Manufacture of fabricated metal products, except machinery and equipment	C25	24.3	14.0	9.7	25.6	24.5	39.6
Manufacture of computer, electronic and optical products	C26	-10.0	6.8	19.2	6.5	9.1	4.2
Manufacture of electrical equipment	C27	15.7	11.3	9.4	16.3	12.7	0.1
Manufacture of machinery and equipment n.e.c.	C28	9.8	5.6	22.1	17.7	25.7	21.9
Manufacture of motor vehicles, trailers and semi-trailers	C29	47.6	12.9	24.8	36.2	23.3	26.8
Manufacture of other transport equipment	C30	-8.0	-33.7	-23.6	-25.9	-62.3	-41.6
Manufacture of furniture	C31	10.6	-1.1	6.2	31.7	25.1	28.2
Other manufacturing	C32	-20.3	-30.7	-22.7	-19.9	-15.4	24.9
Repair and installation of machinery and equipment	C33	49.0	21.4	30.6	19.1	23.2	8.4
Electricity, gas, steam and air conditioning supply	D	-3.0	-3.1	0.9	-4.6	4.2	-7.4
Electricity, gas, steam and air conditioning supply	D35	-3.0	-3.1	0.9	-4.6	4.2	-7.4

¹Working day adjusted.



Table 3

Industrial Production Indices
(seasonally adjusted, 2005=100)

NACE.BG 2008 Code	2009		2010										
	XI	XII	XI	XII	XI	XII	XI	XII	XI	XII	XI	XII	XI
B_TO_E36	96.6	94.7	96.9	87.7	96.3	95.6	95.8	97.6	97.2	99.1	100.3	99.7	101.0
B	81.3	73.5	73.1	74.8	75.5	70.3	75.0	80.8	76.3	75.2	77.4	75.8	80.5
B05	99.9	85.6	89.6	95	92.1	81.2	97.6	101.7	96.4	102.3	102.6	107.9	106.3
B07	84.1	73.7	77.3	74.4	76.8	84.3	71.7	76.8	77.2	75.2	77.5	64.2	78.2
B08	73.5	72.7	73.5	68.9	70.5	58.4	66.7	66.7	63.3	62.0	69.0	65.4	69.4
C	92.4	89.4	94.3	81.5	94.1	95	96.3	97.7	96.7	99.2	101.8	100.1	102.3
C10	107.4	113.2	113.3	112.1	112.1	109.2	122.6	121.7	117.7	118.6	123.1	116.4	121.2
C11	93.4	81.6	85.7	79.9	91.1	87.2	87.1	87.1	88.9	91.3	90.4	81.9	90.6
C12	112.8	97.2	107.4	99.6	116.8	96.3	94.9	106.2	103.6	95.9	87.6	91.0	93.3
C13	63.9	62.6	61.3	58.6	64	69.2	69.5	69.3	70.2	66.2	70.1	68.2	65.8
C14	69.2	68.1	68.1	64.7	65	66.1	66.8	64.6	69.4	67.1	71.8	72.5	71.1
C15	75.2	73.6	76.1	76.7	75.5	74.6	72.2	75.4	76.4	79.0	79.9	78.6	78.2
C16	75.3	72.6	70.7	72	78.9	81.8	79.4	82.4	88.3	86.9	88.8	93.3	84.1
C17	83.5	87.9	91	96.2	106	105.3	113.8	148.9	136.0	147.3	140.2	110.2	138.3
C18	117.6	110.3	119.5	107.5	114.7	117	116.1	100.6	103.6	105.6	120.1	111.9	107.9
C20	83.1	86	94	77.5	86.1	84.9	91.0	87.3	95.5	101.7	103.2	102.6	117.2
C21	82.2	84	83.8	84.2	84.1	84.2	85.3	86.5	83.9	85.9	88.8	79.7	85.6
C22	107.7	105.7	107.5	96.8	106.5	106.9	114.2	113.7	117.0	113.6	122.9	114.6	120.8
C23	78.4	71	72.1	72	77.4	76.7	85.0	88.1	80.6	81.5	83.1	80.7	84.3
C24	106.5	89.9	95.9	100.5	97.6	101.3	100.2	93.3	99.2	96.4	100.3	101.5	91.3
C25	81.6	70.5	81.9	100.3	97.4	89.2	95.5	100.3	95.7	97.2	102.5	107.5	113.1
C26	106.5	106.9	104.6	107.3	97.4	107.4	94.6	101.3	109.3	110.5	103.7	114.8	111.0
C27	136	136.4	155	135	145.8	138	144.9	141.4	141.3	141.1	150.0	146.0	139.6
C28	94.2	93.2	94.2	97	101.9	103.4	106.0	109.1	107.1	113.6	113.4	116.2	114.6
C29	129.5	135.2	144	149.4	157.3	160.5	163.1	160.5	148.4	155.0	163.2	163.7	166.0
C30	92.2	73.6	100.4	88.2	96.7	89.7	118.2	88.3	80.2	119.3	69.6	53.5	57.9
C31	86.3	85.2	91.2	91.8	93.5	92.5	92.6	95.1	94.4	99.1	112.0	106.2	109.4
C32	135.6	107.9	132.6	131.5	144.9	138.7	135.0	125.8	115.4	123.7	133.6	138.7	164.1
C33	94	87.3	102.7	110.1	118.1	116.6	94.3	114.3	112.2	129.8	99.7	118.8	103.9
D	111.6	105.4	108.4	108.5	107.5	109.4	105.3	114.7	116.4	115.2	109.9	115.6	103.8
D35	111.6	105.4	108.4	108.5	107.5	109.4	105.3	114.7	116.4	115.2	109.9	115.6	103.8



Table 4

Industrial Production Indices
(working day adjusted, 2005=100)

NACE.BG 2008 Code	2007	2008	2009		2010										
	XI	XI	XI	XII	XI	XI	XI	XII	XI	XI	XI	XII	XI	XI	XI
B_TO_E36	125.1	115.4	101.6	101.9	88.0	82.3	99.3	93.3	96.2	102.4	101.5	98.4	103.6	104.3	107.3
B	89.2	80.5	89.8	79.6	70.5	71.1	75.4	68.1	73.7	78.1	75.5	73.4	81.7	84.5	89.2
B05	104.4	114.9	118.1	99.1	104.6	100.8	90.1	56.5	80.7	92.2	96.0	94.3	106.7	129.4	125.5
B07	73.2	50.9	86.6	78.4	65.1	66.9	78.8	91.0	81.3	82.4	76.0	73.1	78.3	69.3	80.9
B08	117.2	121.1	81.1	79.5	47.4	54.3	69.5	57.7	73.0	72.6	65.8	64.6	77.0	72.8	78.5
C	128.2	114.9	97.3	95.7	78.2	72.6	96.6	94.3	101.2	105.8	103.5	99.2	107.0	104.5	108.3
C10	123.4	134.6	115.7	126.3	95.9	96.1	111.9	105.9	128.3	125.3	118.8	122.5	137.4	127.2	130.7
C11	111.3	113.5	89.0	103.1	53.7	51.3	85.6	85.6	97.7	105.9	107.6	114.6	97.9	73.7	88.4
C12	88.9	132.7	135.6	98.7	60.6	47.9	96.4	72.4	106.5	116.0	119.6	115.6	112.7	117.6	113.1
C13	150.5	90.7	69.8	60.4	49.7	56.7	73.6	76.4	82.7	77.9	78.8	51.0	70.6	70.8	71.8
C14	115.6	96.8	70.4	74.9	67.1	64.6	68.6	61.4	67.0	68.7	79.9	66.3	72.5	73.7	73.4
C15	131.6	126.5	74.3	67.5	80.3	86.4	77.0	68.5	62.4	80.7	91.4	76.9	89.0	84.8	75.5
C16	116.6	103.9	85.2	73.6	55.0	61.0	79.9	80.7	83.2	88.3	93.2	88.3	96.8	100.8	92.8
C17	107.9	96.5	78.8	86.7	90.5	97.4	112.6	111.3	121.7	152.0	131.9	147.3	144.5	111.1	137.6
C18	124.9	141.4	128.3	129.9	99.7	93.5	109.5	113.5	118.2	105.6	103.7	110.6	133.3	122.3	117.5
C20	112.5	80.1	84.4	90.0	89.6	70.7	97.7	89.7	91.3	92.2	97.1	95.1	105.6	98.3	122.8
C21	121.0	111.0	89.1	92.0	77.9	85.1	86.3	82.9	90.4	99.2	73.3	84.1	95.5	62.9	96.4
C22	114.6	134.8	116.4	105.7	86.7	82.7	109.9	106.9	115.3	123.2	129.1	115.7	132.4	128.5	131.3
C23	157.1	154.1	84.5	70.0	45.2	53.3	73.2	77.4	94.8	99.4	88.9	86.5	94.3	90.6	91.7
C24	111.9	91.1	110.4	78.6	83.9	99.0	107.6	102.4	99.7	93.6	105.3	93.4	95.5	107.7	93.6
C25	149.5	117.9	86.2	93.0	58.1	89.5	100.6	90.5	98.0	108.6	99.1	98.2	108.4	104.3	120.3
C26	105.9	90.5	110.7	142.0	88.1	89.5	100.6	104.7	97.6	104.0	105.6	98.9	113.8	115.1	115.4
C27	175.2	168.9	157.8	144.2	141.0	123.1	146.9	133.0	149.5	146.1	148.3	125.7	173.8	170.6	157.9
C28	153.7	140.1	101.7	102.8	81.3	89.4	106.8	103.8	108.2	119.2	114.5	106.1	120.5	124.4	123.9
C29	188.5	100.0	127.8	121.4	135.7	145.8	170.9	163.5	162.2	174.6	135.4	123.6	160.7	169.9	162.0
C30	142.7	176.2	92.3	105.1	43.7	58.9	89.3	69.9	139.2	90.6	85.9	147.3	78.5	49.8	53.9
C31	187.0	158.4	94.0	99.5	77.2	82.5	98.6	92.4	99.8	101.1	97.9	97.7	119.2	114.2	120.6
C32	161.9	157.2	146.8	104.7	102.9	114.1	145.1	138.3	145.5	141.2	115.0	122.7	150.7	164.5	183.4
C33	141.4	144.1	102.9	117.4	70.2	90.5	120.2	107.0	90.2	122.0	119.7	131.7	103.3	124.5	111.5
D	132.2	132.6	121.6	133.5	128.9	121.3	120.1	100.3	86.9	99.9	104.4	103.8	99.2	111.4	112.6
D35	132.2	132.6	121.6	133.5	128.9	121.3	120.1	100.3	86.9	99.9	104.4	103.8	99.2	111.4	112.6