

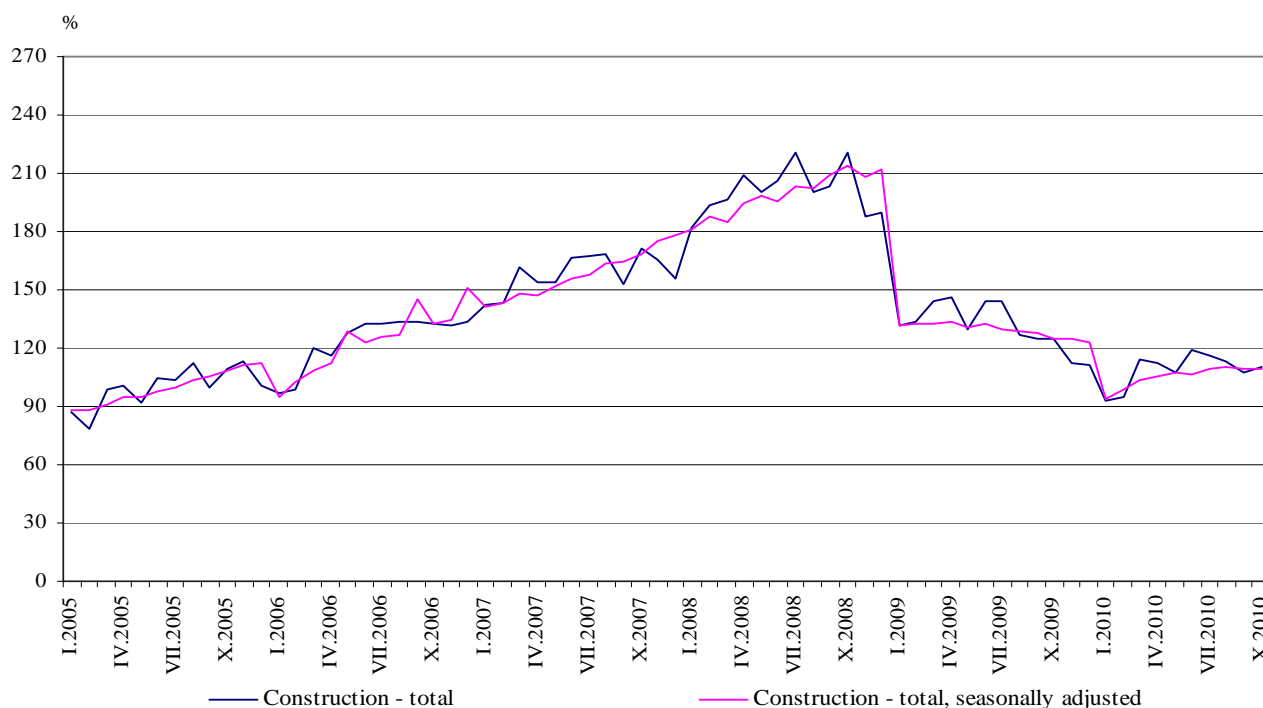


CONSTRUCTION PRODUCTION INDICES¹ IN OCTOBER 2010²

According to the preliminary data of the NSI, the production in section 'Construction', calculated on the base of seasonally adjusted data³, registered a decrease by 0.1% in October 2010, compared to the previous month (Table 2).

In October 2010 working day adjusted data⁴ showed a drop by 10.7% in the construction production, compared to the same month of 2009 (Table 4).

**Figure 1. Construction Production Indices
(2005 = 100)**



¹ Data for October 2010 are preliminary.

² The monthly indices show the short-term changes in the construction production between two comparable periods. This information can be used to analyze the current state of the construction activity in the country, as well as short-term forecast for its future development. The indices are calculated on the base of information on hours worked in the construction. The data are collected with monthly sample survey, which includes construction enterprises, which production exceeds 75% of the total production in construction. Construction Production Indices are calculated on the base (2005 = 100).

³ **Seasonal adjustment** is a statistical method, which eliminates the seasonal component of time series and it is particularly suitable for long-term comparisons and analysis of the data.

⁴ **Working day adjustment** is an adjustment for variations in monthly data, caused by calendar effects, different number of calendar and working days in the months, national holidays and outliers (for example the presence of more non-working days in May could contribute to the decline in the production in some activities).

The seasonally and working day adjusted data for period 2000 - 2010 can be found in NSI internet web-site:
(<http://www.nsi.bg/otrasalen.php?otr=32>).



Figure 2. Percentage change of the indices of the construction production compared to the previous month

(Seasonally adjusted , 2005 = 100)

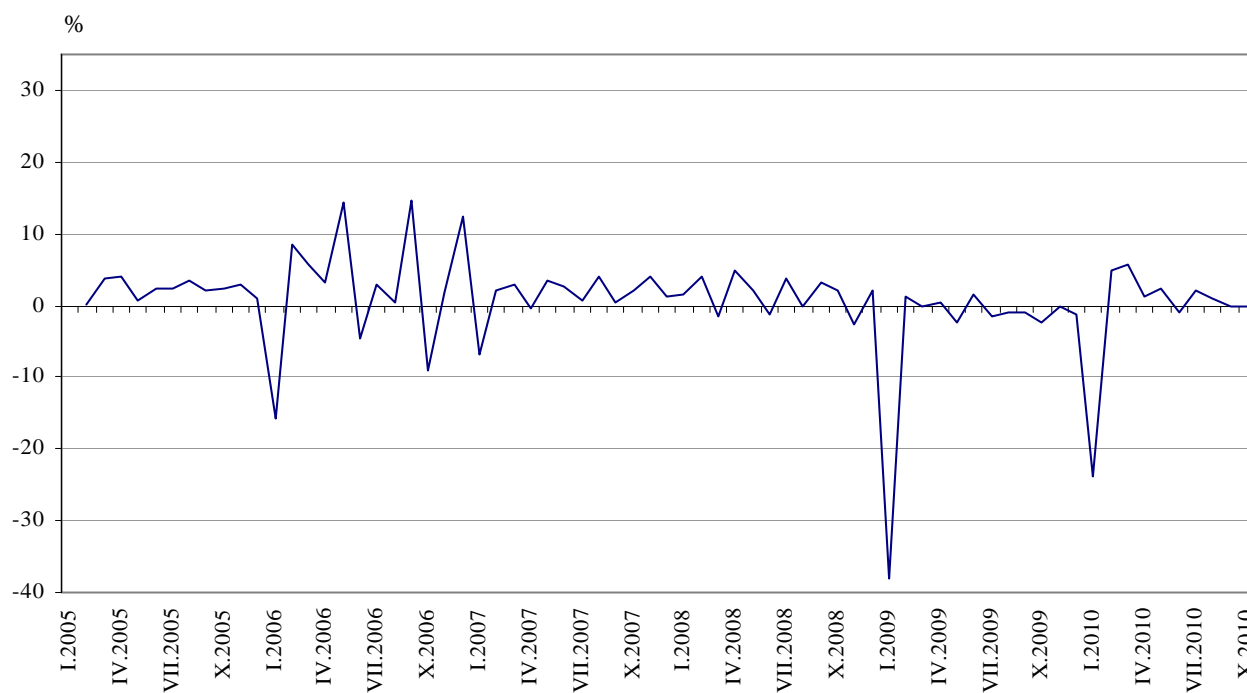


Table 1

Monthly Construction Production Indices
(Seasonally adjusted, 2005 = 100)

	2009			2010									
	X	XI	XII	I	II	III	IV	V	VI	VII	VIII	IX	X
Construction - total	124.6	124.5	122.9	93.7	98.2	103.9	105.3	107.7	106.8	109.0	109.9	109.7	109.6
Building construction	108.3	106.1	103.1	98.7	95.7	95.9	92.7	91.8	90.1	88.2	88.2	86.6	85.7
Civil engineering	141.1	143.6	144.1	142.8	142.0	144.5	145.0	146.2	147.1	146.1	148.9	147.0	148.3



Monthly changes

In October 2010 the construction production was below the level of previous month. The production of building construction registered a decrease by 1.1%, while the civil engineering showed an increase by 0.9 %, calculated from seasonally adjusted data (Table 2).

Table 2

Percentage changes of monthly Construction Production Indices compared to the previous month¹

	2009			2010									
	X	XI	XII	I	II	III	IV	V	VI	VII	VIII	IX	X
Construction - total	-2.3	-0.1	-1.3	-23.7	4.8	5.8	1.3	2.3	-0.9	2.0	0.9	-0.2	-0.1
Building construction	-4.0	-2.0	-2.8	-4.3	-3.0	0.2	-3.3	-1.0	-1.8	-2.1	0.0	-1.8	-1.1
Civil engineering	-1.4	1.8	0.3	-0.9	-0.6	1.8	0.3	0.8	0.6	-0.7	1.9	-1.3	0.9

¹ Seasonally adjusted

Table 3

Monthly Construction Production Indices (working day adjusted, 2005 = 100)

	2007	2008	2009			2010									
	X	X	X	XI	XII	I	II	III	IV	V	VI	VII	VIII	IX	X
Construction - total	169.5	218.8	125.4	112.4	113.0	95.0	95.0	114.3	113.1	110.5	117.9	116.1	113.6	109.5	112.0
Building construction	165.8	206.4	113.7	101.0	100.1	85.8	82.5	97.6	95.2	91.7	97.2	96.7	97.1	91.9	92.4
Civil engineering	176.0	243.6	149.8	141.8	138.3	117.7	125.3	152.1	154.5	150.8	164.5	158.3	154.8	149.3	156.9



Annual changes

On annual bases in October 2010 the decrease of production in construction, calculated from working day adjusted was determined mainly from the drop by 18.7% in the building construction, while the civil engineering showed an increase by 4.7 % (Table 4).

Table 4

**Percentage changes of monthly Construction Production Indices
compared to the same month of the previous year¹**

	2007	2008	2009			2010									
	X	X	X	XI	XII	I	II	III	IV	V	VI	VII	VIII	IX	X
Construction - total	28.1	29.1	-42.7	-40.9	-41.7	-27.9	-29.0	-21.5	-22.8	-17.8	-17.7	-18.8	-11.6	-13.0	-10.7
Building construction	27.1	24.5	-44.9	-43.5	-45.9	-35.2	-37.3	-30.4	-32.2	-28.0	-27.3	-26.5	-18.8	-20.3	-18.7
Civil engineering	25.1	38.4	-38.5	-34.2	-34.3	-7.2	-11.3	-4.8	-4.5	-1.9	-0.5	-5.1	2.7	1.9	4.7

¹ Working day adjusted